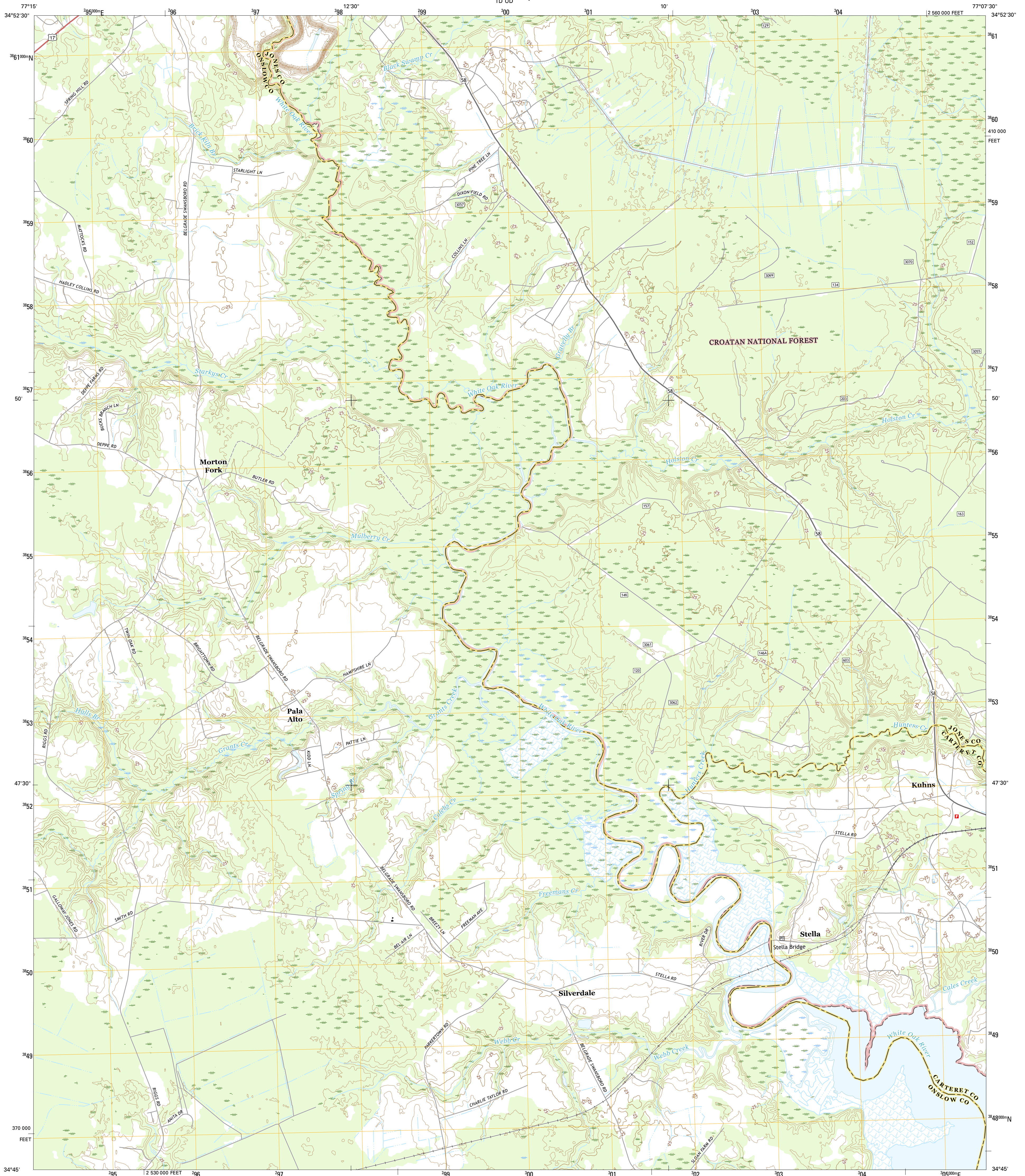




U.S. DEPARTMENT OF THE INTERIOR  
U.S. GEOLOGICAL SURVEY



STELLA QUADRANGLE  
NORTH CAROLINA  
7.5-MINUTE SERIES

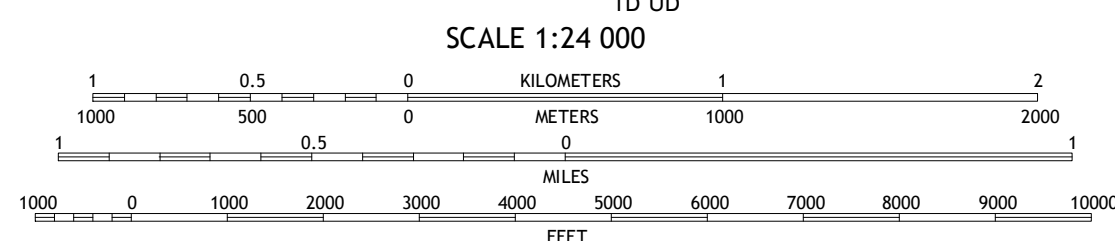
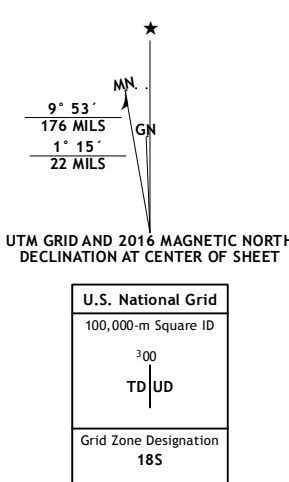


**Produced by the United States Geological Survey**

North American Datum of 1983 (NAD83)  
World Geodetic System of 1984 (WGS84). Projection and  
1 000-meter grid: Universal Transverse Mercator, Zone 18S  
10 000-foot ticks: North Carolina Coordinate System of 1983

This map is not a legal document. Boundaries may be  
generalized for this map scale. Private lands within government  
reservations may not be shown. Obtain permission before  
entering private lands.

Imagery.....NAIP, July 2014  
Roads.....U.S. Census Bureau, 2015 - 2016  
Roads within US Forest Service Lands.....FSTopo Data  
with limited Forest Service updates, 2012 - 2016  
Names.....GNIS, 2016  
Hydrography.....National Hydrography Dataset, 2014  
Contours.....National Elevation Dataset, 2015  
Boundaries.....Multiple sources; see metadata file 1972 - 2016  
Wetlands.....FWS National Wetlands Inventory 1977 - 2014



CONTOUR INTERVAL 5 FEET  
NORTH AMERICAN VERTICAL DATUM OF 1988

This map was produced to conform with the  
National Geospatial Program US Topo Product Standard, 2011.  
A metadata file associated with this product is draft version 0.6.19



QUADRANGLE LOCATION

1	2	3
4	5	6
7	8	

1 Jacksonville NE  
2 Maysville  
3 Catfish Lake  
4 Kellum  
5 Hadnot Creek  
6 Camp Lejeune  
7 Hubert  
8 Swansboro

ROAD CLASSIFICATION	
	Expressway
	Secondary Hwy
	Ramp
	Interstate Route
	FS Primary Route
	FS Passenger Route
	Local Connector
	Local Road
	4WD
	US Route
	FS High Clearance Route
	State Route
	FS High Clearance Route

Check with local Forest Service unit  
for current travel conditions and restrictions.

STELLA, NC  
2016



USGS X 24 4 3 0 2  
NSN 7540-01-000-0000  
USGS REF NO.