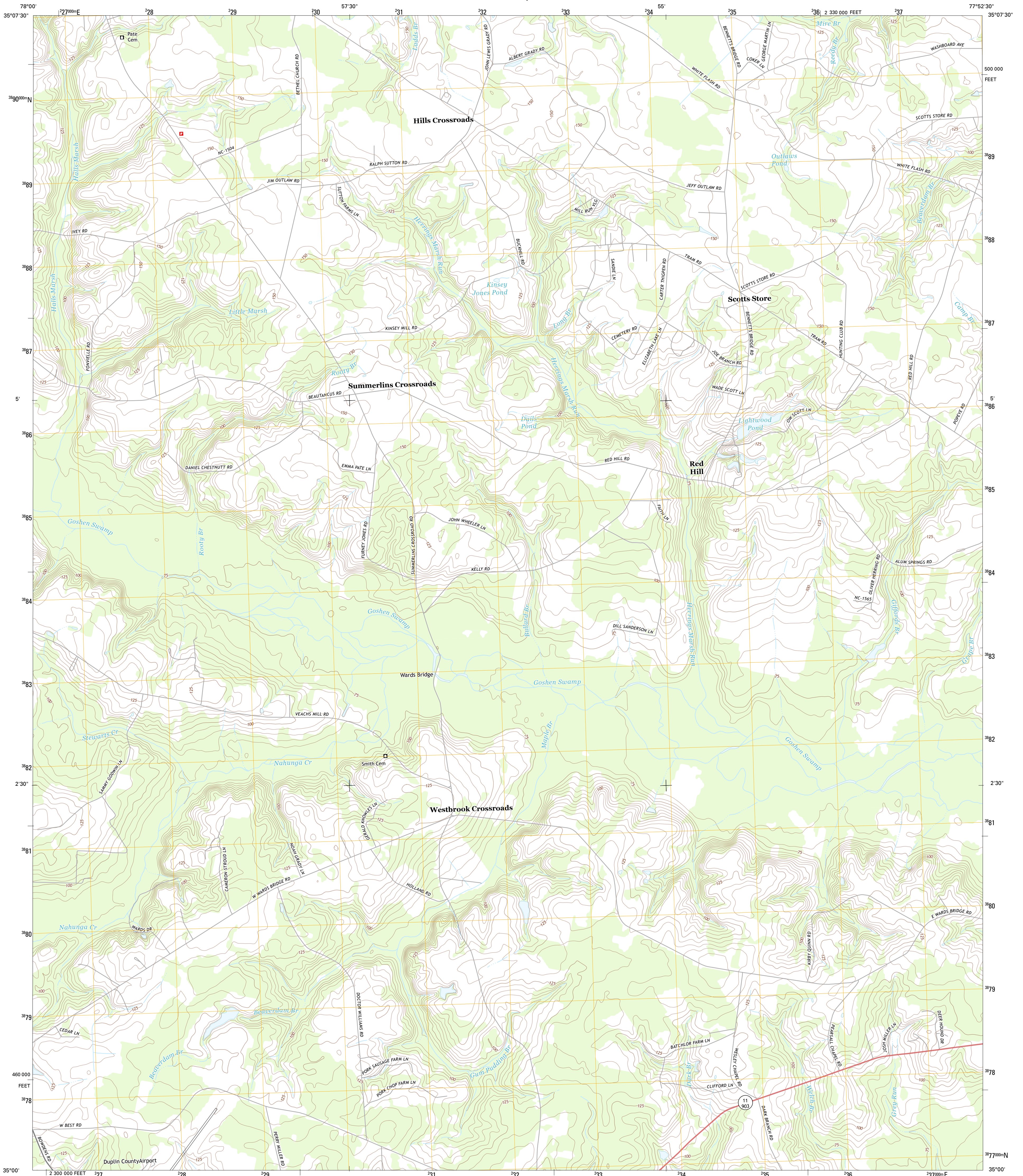




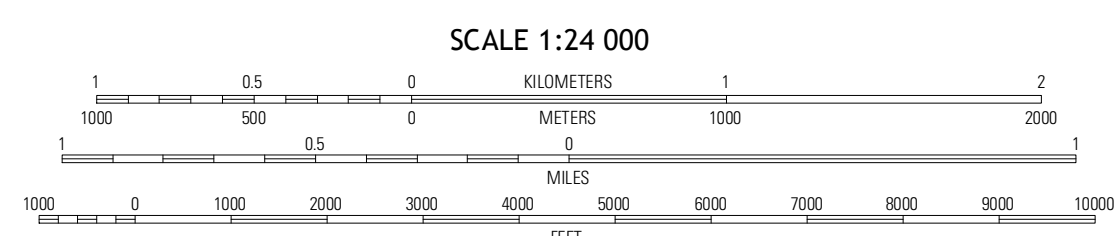
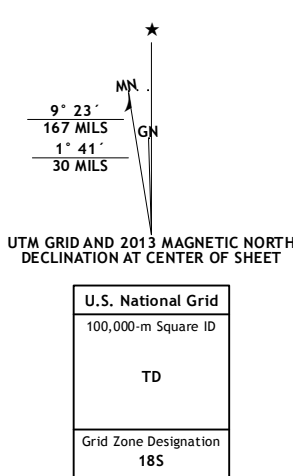
U.S. DEPARTMENT OF THE INTERIOR
U. S. GEOLOGICAL SURVEY



SUMMERLINS CROSSROADS QUADRANGLE
NORTH CAROLINA-DUPLIN CO.
7.5-MINUTE SERIES



Produced by the United States Geological Survey
North American Datum of 1983 (NAD83)
World Geodetic System of 1984 (WGS84) Projection and
1 000-meter grid: Universal Transverse Mercator, Zone 18S
10 000-foot ticks: North Carolina Coordinate System of 1983



ROAD CLASSIFICATION

- Expressway
- Secondary Hwy
- Ramp
- Local Connector
- Local Road
- 4WD
- US Route
- State Route

QUADRANGLE LOCATION

Mount Olive	Williams	Seven Springs
Warsaw North	Summerlins Crossroads	Alberton
Warsaw South	Kenansville	Beulaville

Imagery.....NAIP, June 2012
Roads.....©2006-2012, TomTom
Names.....©2012, GeBCO
Hydrography.....National Hydrography Dataset, 2012
Contours.....National Elevation Dataset, 2008
Boundaries.....Census, IBC, USGS, 1972-2012

CONTOUR INTERVAL 5 FEET
NORTH AMERICAN VERTICAL DATUM OF 1988
This map was produced to conform with the
National Geospatial Program US Topo Product Standard, 2011.
A metadata file associated with this product is draft version 0.6.11

SUMMERLINS CROSSROADS, NC
2013

ADJOINING 7.5 QUADRANGLES