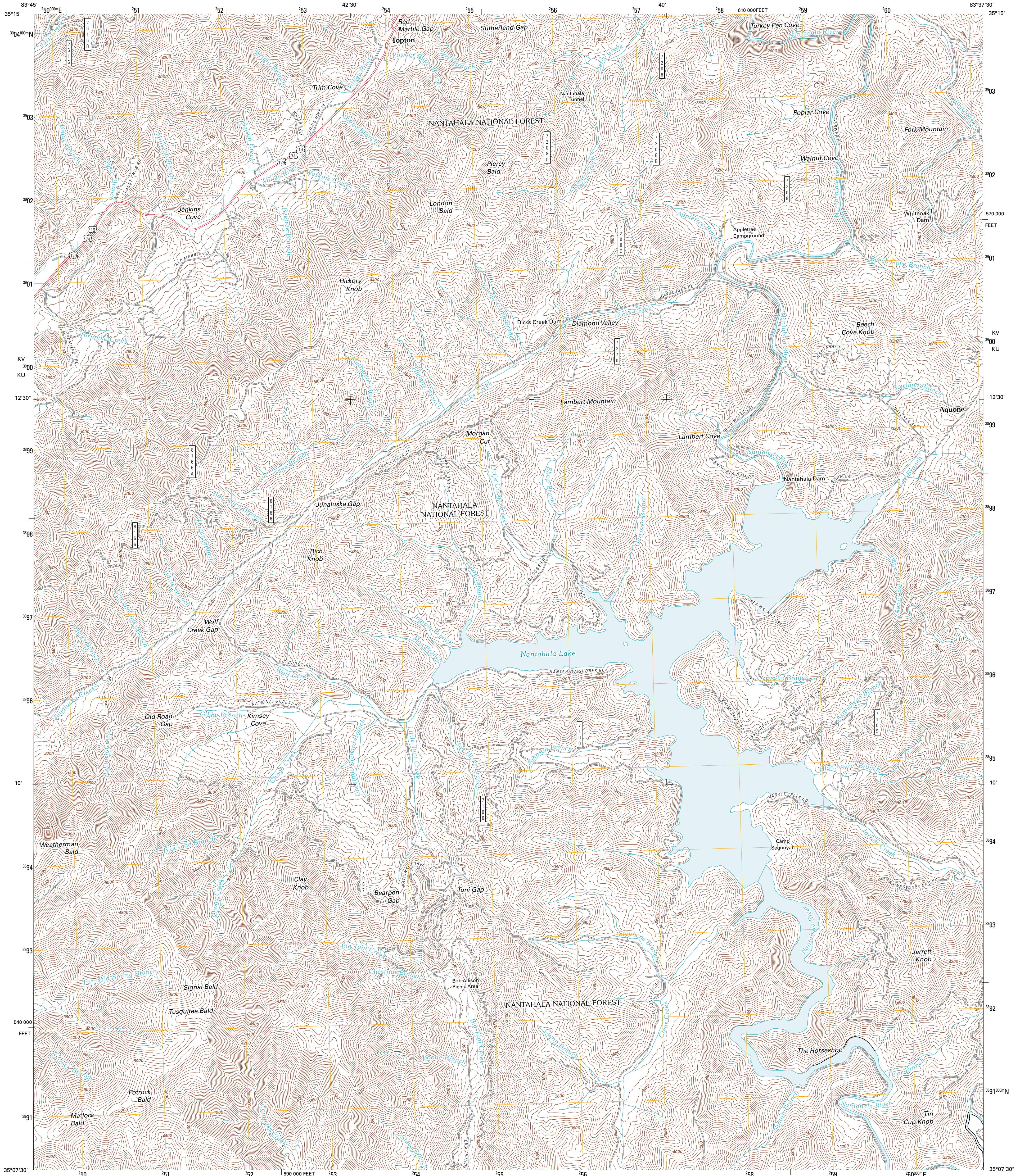




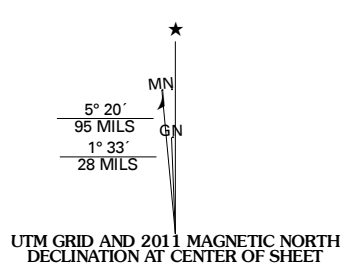
U.S. DEPARTMENT OF THE INTERIOR
U. S. GEOLOGICAL SURVEY



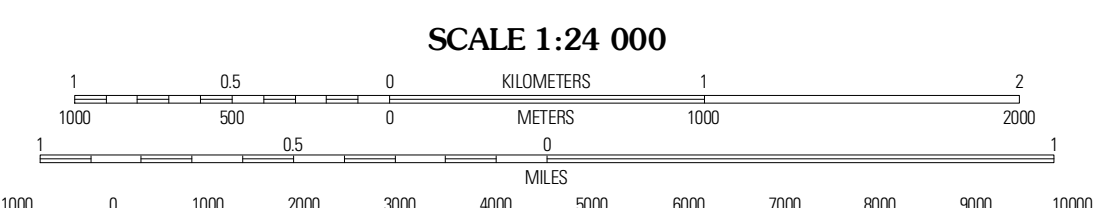
TOPTON QUADRANGLE
NORTH CAROLINA
7.5-MINUTE SERIES



Produced by the United States Geological Survey
North American Datum of 1983 (NAD83)
World Geodetic System of 1984 (WGS84). Projection and
1 000-meter grid; Universal Transverse Mercator, Zone 17S
10 000-foot ticks; North Carolina Coordinate System of 1983



U.S. National Grid	KV	710
100,000-m Square ID	KU	710
Grid Zone Designation	17S	



CONTOUR INTERVAL 40 FEET
NORTH AMERICAN VERTICAL DATUM OF 1988
This map was produced to conform with version 0.5.10 of the
draft USGS Standards for 7.5-Minute Quadrangle Maps.
A metadata file associated with this product is draft version 0.5.12



QUADRANGLE LOCATION

Robbinsville	Hewitt	Wesser
Andrews	Topton	Wayah Bald
Hogsville	Shooting Creek	Rainbow Springs

ADJOINING 7.5 QUADRANGLES

ROAD CLASSIFICATION

Interstate Route	State Route
US Route	Local Road
Interstate Route	4WD
FS Primary Route	US Route
FS Passenger Route	FS Passenger Route
FS High Clearance Route	FS High Clearance Route

Check with local Forest Service unit for current travel conditions and restrictions.

TOPTON, NC
2011