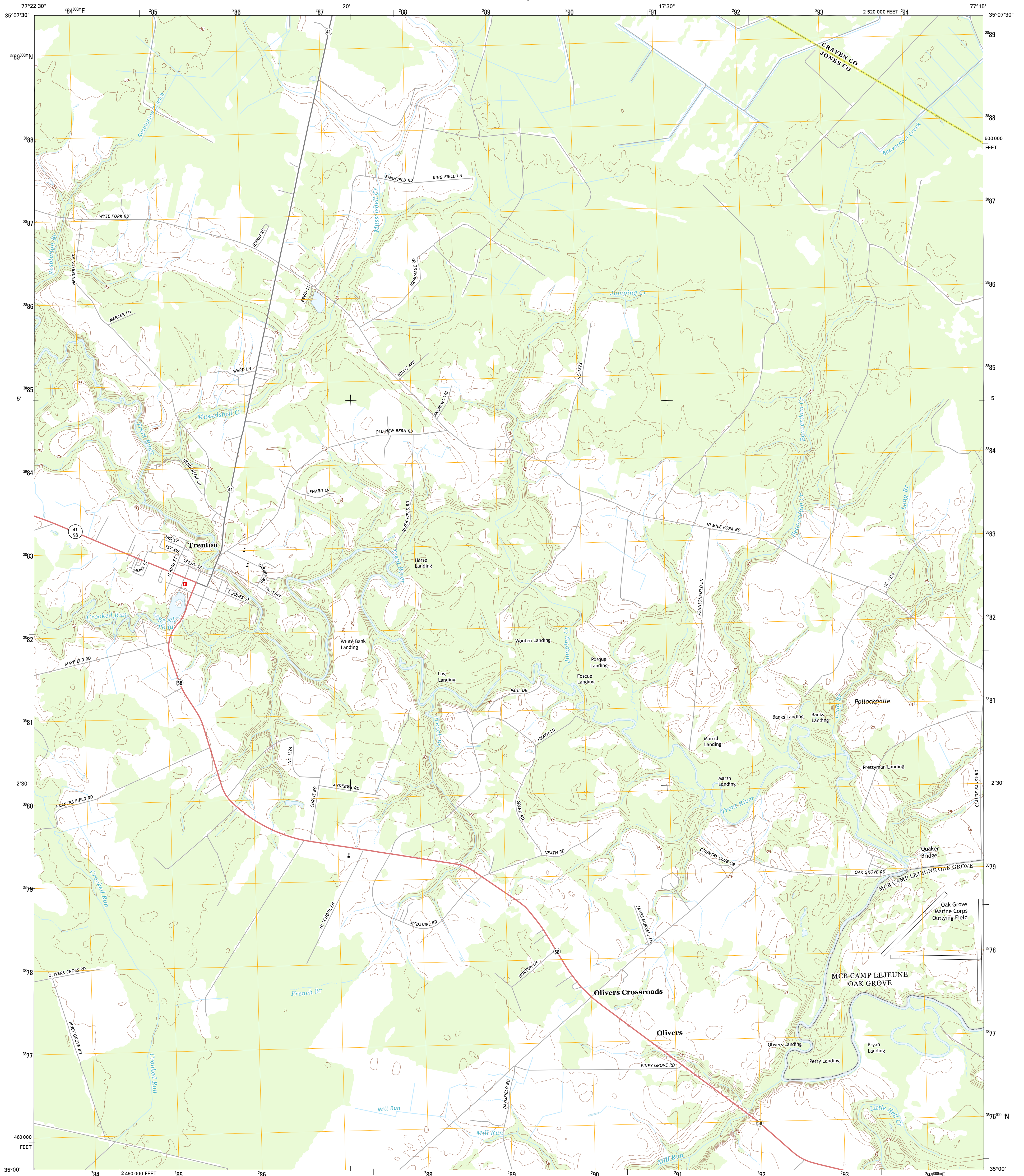




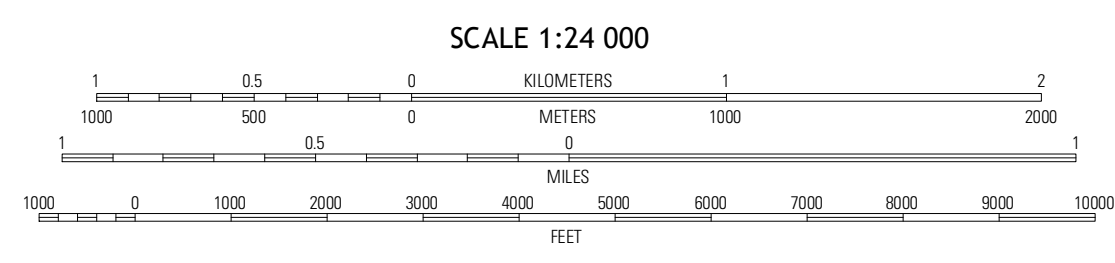
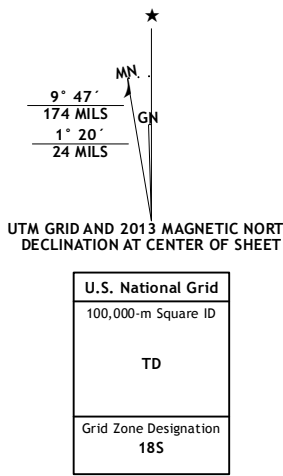
U.S. DEPARTMENT OF THE INTERIOR
U. S. GEOLOGICAL SURVEY



TRENTON QUADRANGLE
NORTH CAROLINA
7.5-MINUTE SERIES



Produced by the United States Geological Survey
North American Datum of 1983 (NAD83)
World Geodetic System of 1984 (WGS84) Projection and
1 000-meter grid; Universal Transverse Mercator, Zone 18S
10 000-foot ticks; North Carolina Coordinate System of 1983

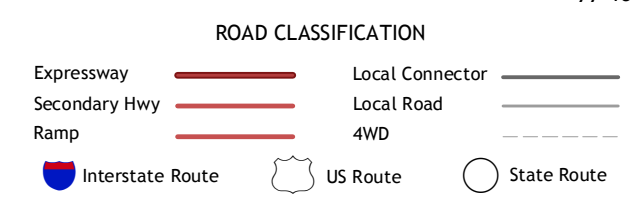


CONTOUR INTERVAL 5 FEET
NORTH AMERICAN VERTICAL DATUM OF 1988
This map was produced to conform with the
National Geospatial Program US Topo Product Standard, 2011.
A metadata file associated with this product is draft version 0.6.11



QUADRANGLE LOCATION

| | | |
|---------------------|-----------------|--------------|
| Dover | Cove City | Jasper |
| Phillips Crossroads | Trenton | Pollockville |
| Jacksonville NW | Jacksonville NE | Mayo |



TRENTON, NC
2013

ADJOINING 7.5 QUADRANGLES