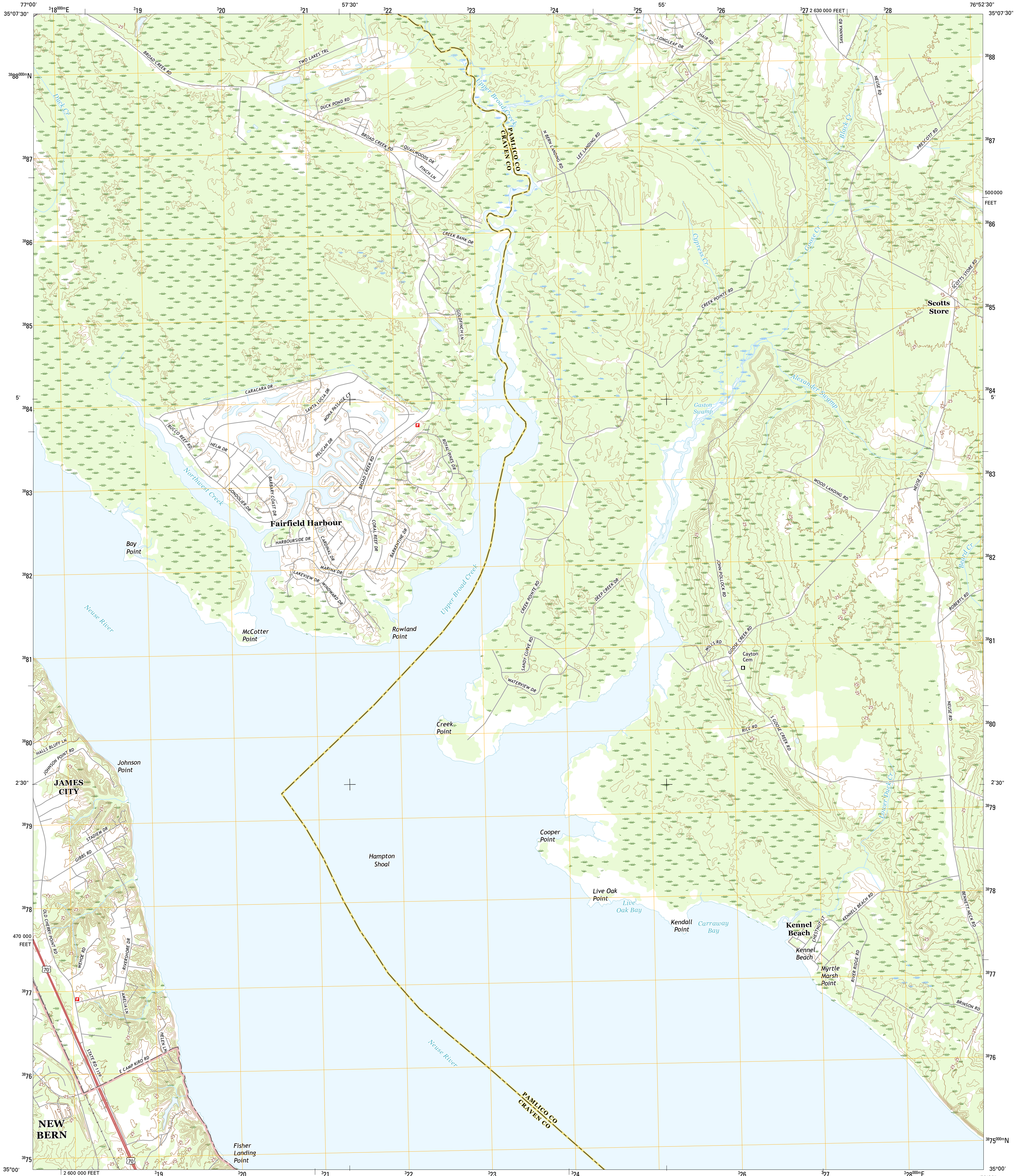




U.S. DEPARTMENT OF THE INTERIOR  
U.S. GEOLOGICAL SURVEY



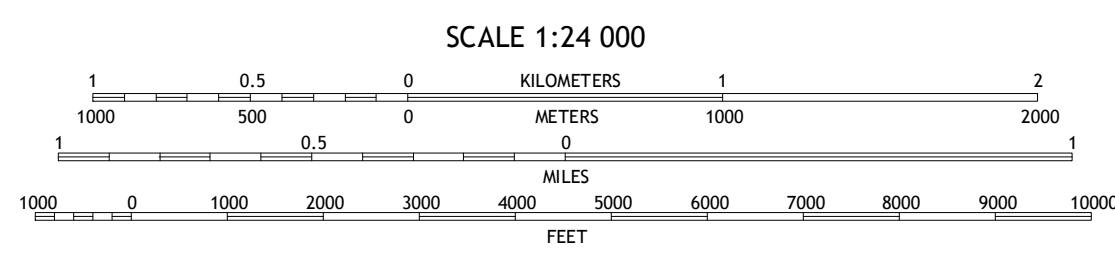
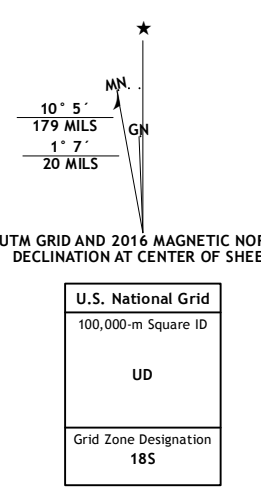
UPPER BROAD CREEK QUADRANGLE  
NORTH CAROLINA  
7.5-MINUTE SERIES



Produced by the United States Geological Survey  
North American Datum of 1983 (NAD83)  
World Geodetic System of 1984 (WGS84) Projection and  
1 000-meter grid; Universal Transverse Mercator, Zone 18S  
10 000-foot ticks; North Carolina Coordinate System of 1983

This map is not a legal document. Boundaries may be  
generalized for this map scale. Private lands within government  
reservations may not be shown. Obtain permission before  
entering private lands.

Imagery:.....NAIP, October 2014  
Roads:.....U.S. Census Bureau, 2015 - 2016  
Roads within US Forest Service Lands:.....FSTopo Data  
with limited Forest Service updates, 2012 - 2016  
Names:.....GNIS, 2016  
Hydrography:.....National Hydrography Dataset, 2014  
Contours:.....National Elevation Dataset, 2015  
Boundaries:.....Multiple sources; see metadata file 1972 - 2016  
Wetlands:.....FWS National Wetlands Inventory 1977 - 2014



CONTOUR INTERVAL 5 FEET  
NORTH AMERICAN VERTICAL DATUM OF 1988

This map was produced to conform with the  
National Geospatial Program US Topo Product Standard, 2011.  
A metadata file associated with this product is draft version 0.6.19



ROAD CLASSIFICATION

|                  |                         |
|------------------|-------------------------|
| Expressway       | Local Connector         |
| Secondary Hwy    | Local Road              |
| Ramp             | 4WD                     |
| Interstate Route | US Route                |
| FS Primary Route | FS Passenger Route      |
|                  | FS High Clearance Route |

Check with local Forest Service unit  
for current travel conditions and restrictions.

ADJOINING QUADRANGLES

|   |   |   |
|---|---|---|
| 1 | 2 | 3 |
| 4 | 5 | 6 |
| 7 | 8 |   |

1 Askin  
2 Reelsboro  
3 Babboro  
4 New Bern  
5 Arapahoe  
6 Catfish Lake  
7 Havelock  
8 Cherry Point

UPPER BROAD CREEK, NC  
2016

