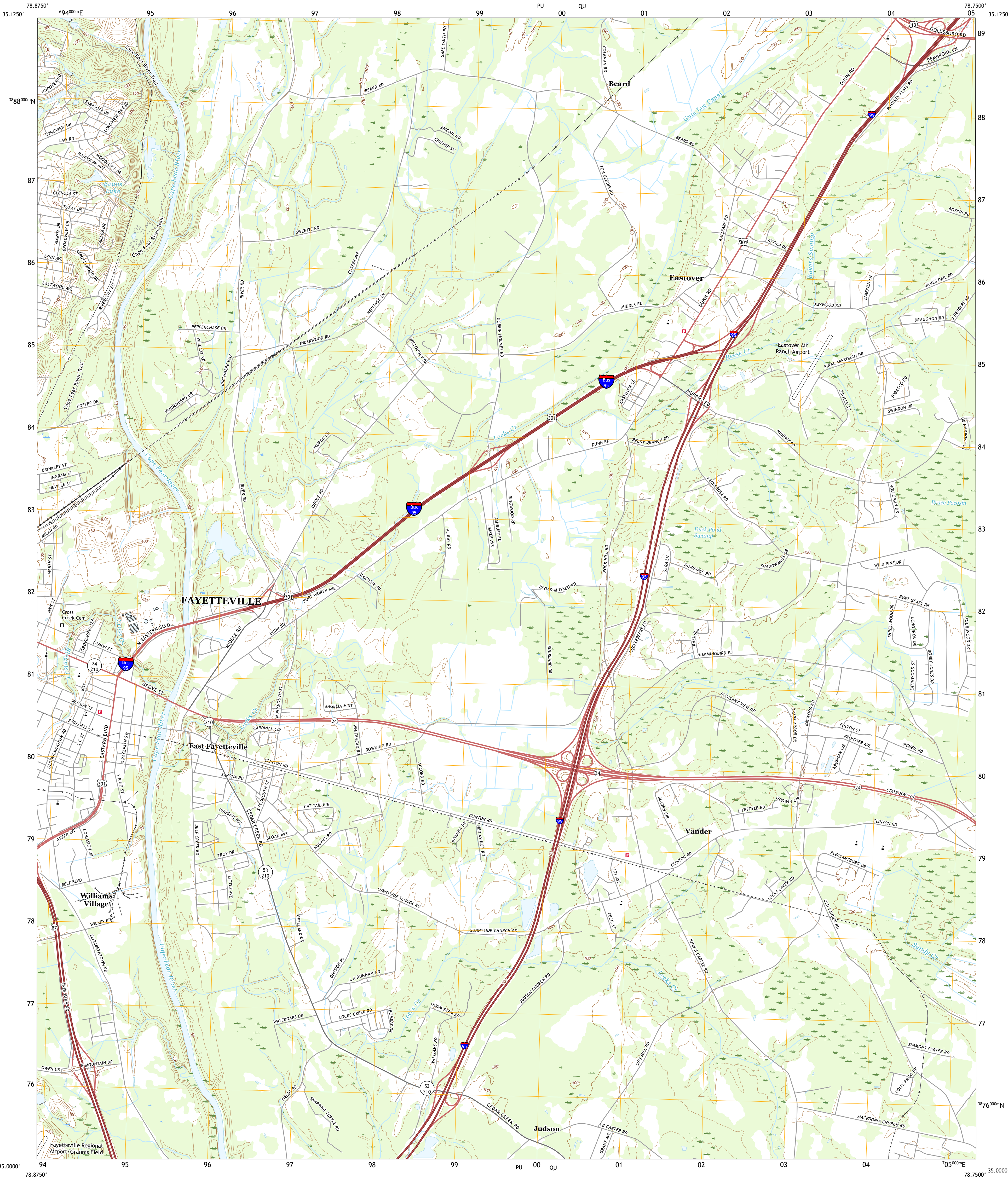




U.S. DEPARTMENT OF THE INTERIOR  
U.S. GEOLOGICAL SURVEY

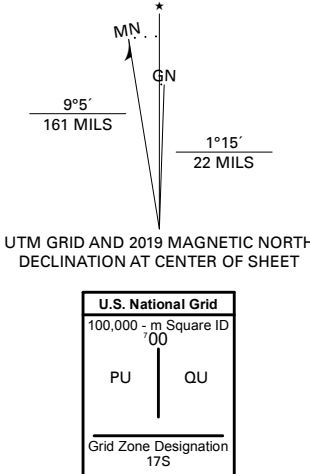


VANDER QUADRANGLE  
NORTH CAROLINA - CUMBERLAND COUNTY  
7.5-MINUTE SERIES



Produced by the United States Geological Survey

North American Datum of 1983 (NAD83)  
World Geodetic System of 1984 (WGS84). Projection and  
1 000-meter grid/Universal Transverse Mercator, Zone 17S  
This map is not a legal document. Boundaries may be  
generalized for this map scale. Private lands within government  
reservations may not be shown. Obtain permission before  
entering private lands.  
Imagery.....NAIP, May 2016 - November 2016  
Roads.....U.S. Census Bureau, 2016  
Names.....GNIS, 1980 - 2019  
Hydrography.....National Hydrography Dataset, 1989 - 2018  
Contours.....National Elevation Dataset, 2008  
Boundaries.....Multiple sources; see metadata file 2017 - 2018  
Wetlands.....FWS National Wetlands Inventory 1983



CONTOUR INTERVAL 10 FEET  
NORTH AMERICAN VERTICAL DATUM OF 1988  
This map was produced to conform with the  
National Geospatial Program US Topo Product Standard, 2011.  
A metadata file associated with this product is draft version 0.6.18



1	2	3
4	5	6
7	8	

ADJOINING QUADRANGLES

- 1 Manchester
- 2 Slocomb
- 3 Wade
- 4 Fayetteville
- 5 Steadman
- 6 Hope Mills
- 7 Cedar Creek
- 8 Autryville

ROAD CLASSIFICATION		
Expressway	Local Connector	
Secondary Hwy	Local Road	
Ramp	4WD	
Interstate Route	US Route	State Route

VANDER, NC  
2019

