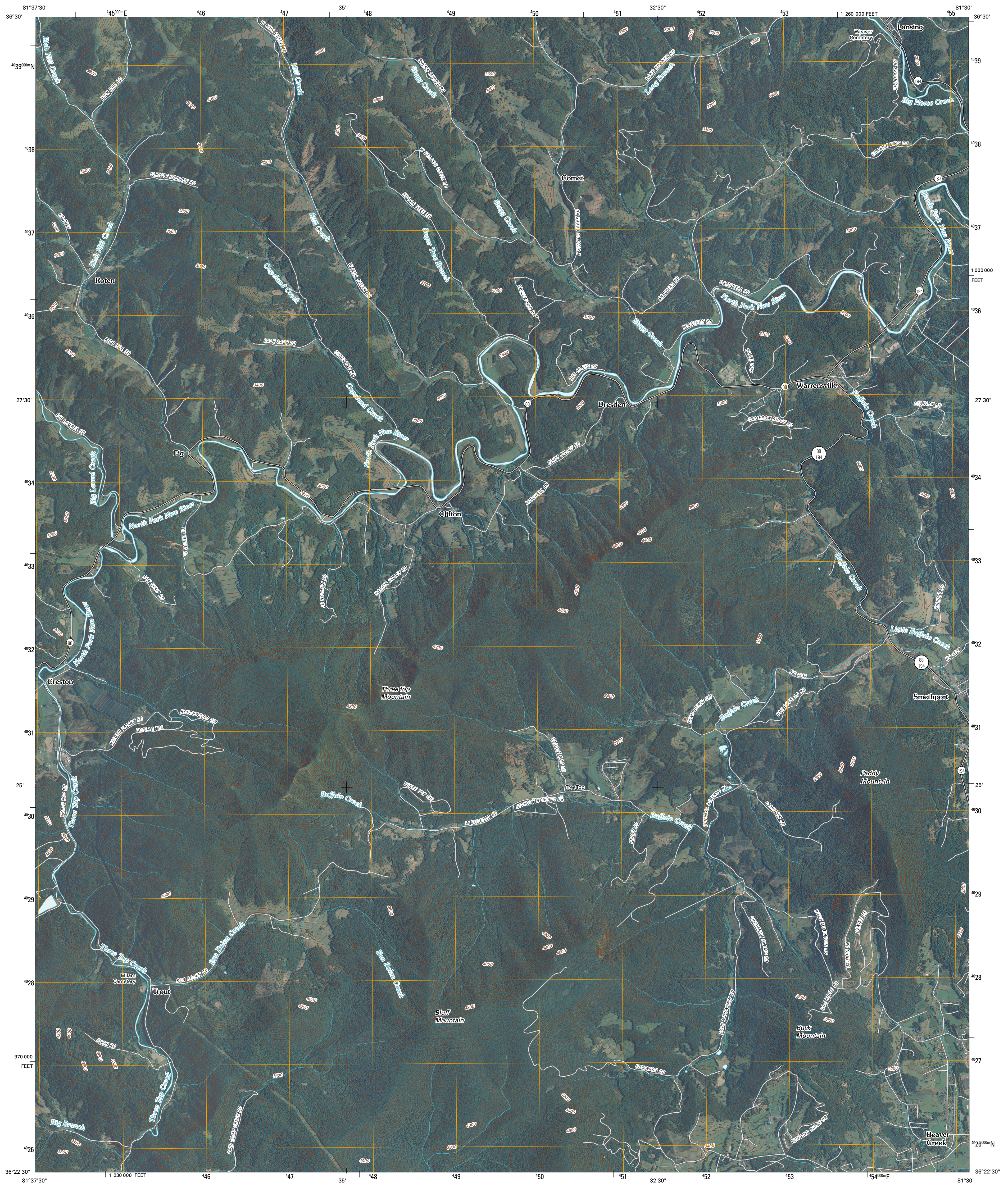




U.S. DEPARTMENT OF THE INTERIOR
U. S. GEOLOGICAL SURVEY

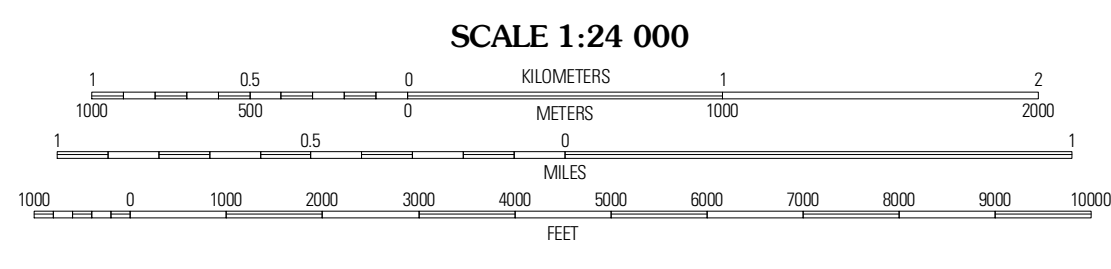
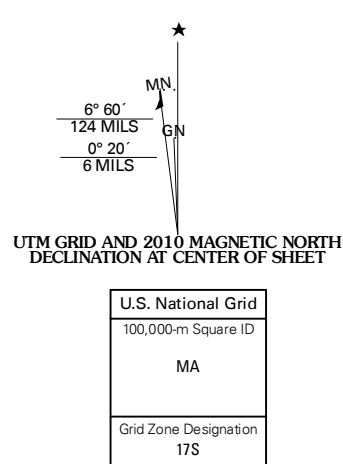


WARRENSVILLE QUADRANGLE
NORTH CAROLINA
7.5-MINUTE SERIES

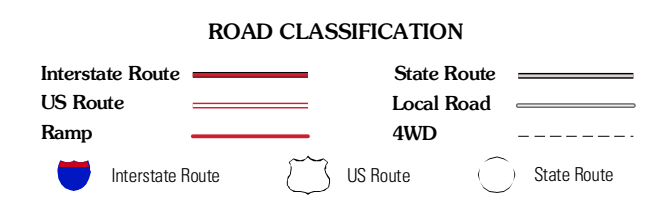
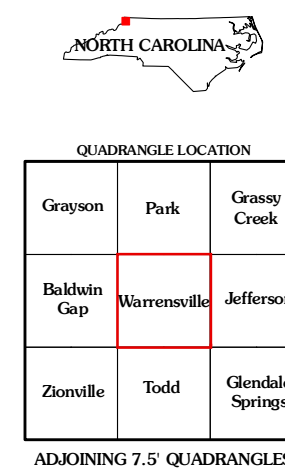


Produced by the United States Geological Survey
North American Datum of 1983 (NAD83)
Roads: ©2006-2010 Tele Atlas
World Geodetic System of 1984 (WGS84), Projection and
1 000-meter grid: Universal Transverse Mercator, Zone 17S
10 000-foot ticks: North Carolina Coordinate System of 1983

Imagery: N/AIP, July 2008
Roads: ©2006-2010 Tele Atlas
Names: GNS, 2008
Hydrography: National Hydrography Dataset, 2008
Contours: National Elevation Dataset, 2008



CONTOUR INTERVAL 40 FEET
NORTH AMERICAN VERTICAL DATUM OF 1988
This map was produced to conform with version 0.5.10 of the
draft USGS Standards for 7.5-Minute Quadrangle Maps.
A metadata file associated with this product is draft version 0.5.11



QUADRANGLE LOCATION

Grayson	Park	Grassy Creek
Belknap	Warrensville	Jefferson
Zionville	Todd	Glenade Springs

ADJOINING 7.5 QUADRANGLES

WARRENSVILLE, NC
2010