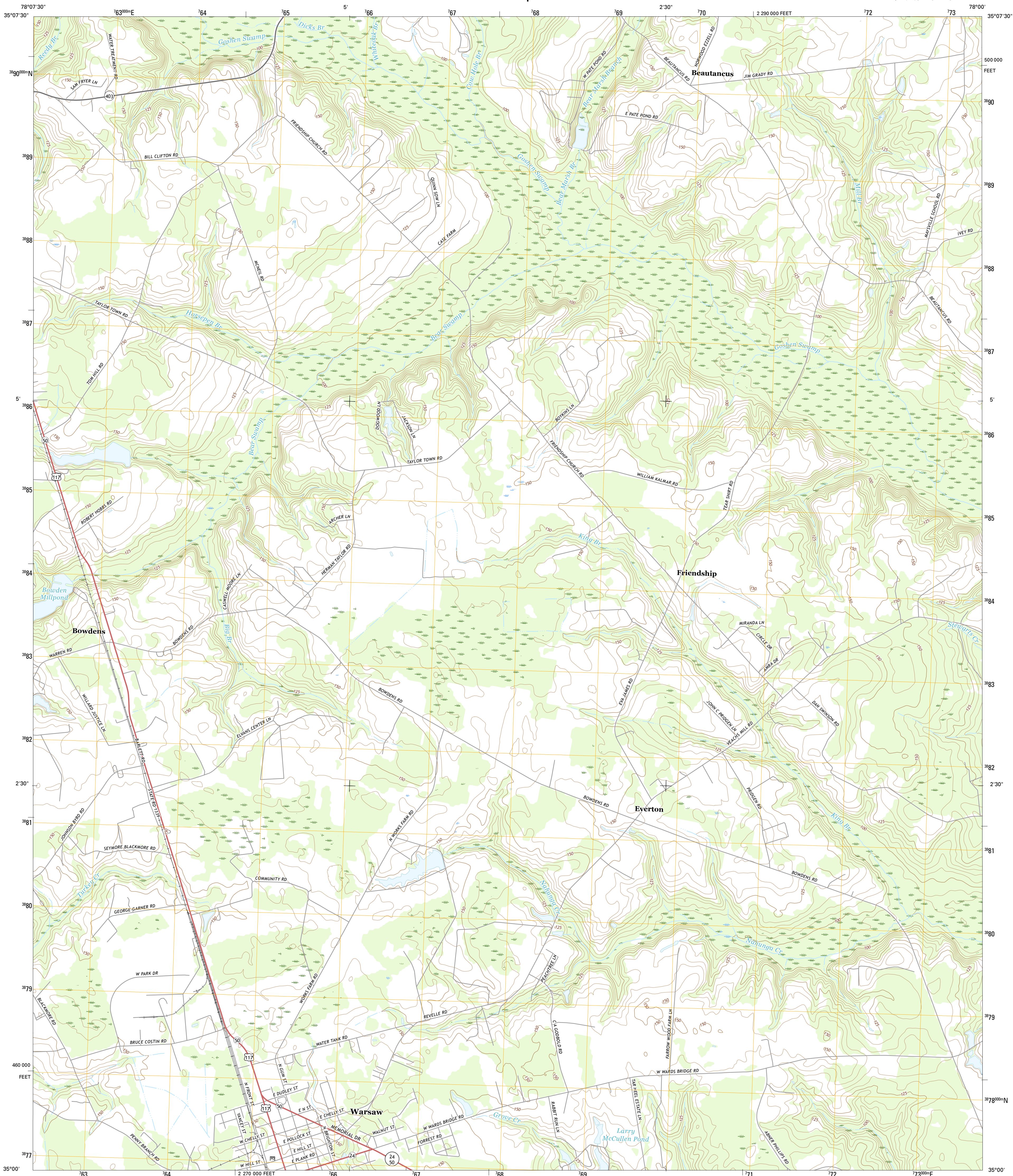




U.S. DEPARTMENT OF THE INTERIOR
U.S. GEOLOGICAL SURVEY



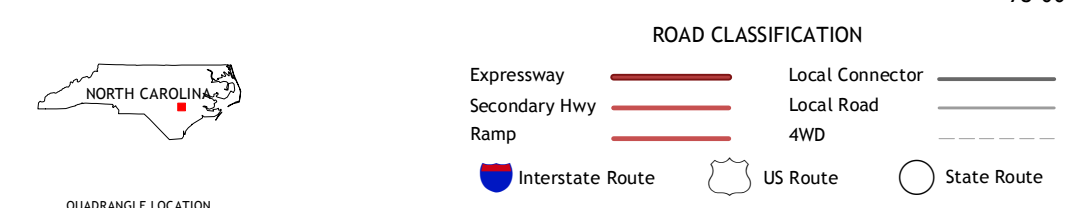
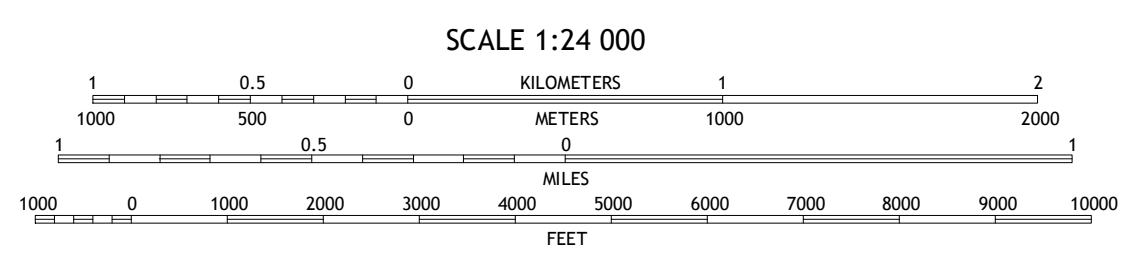
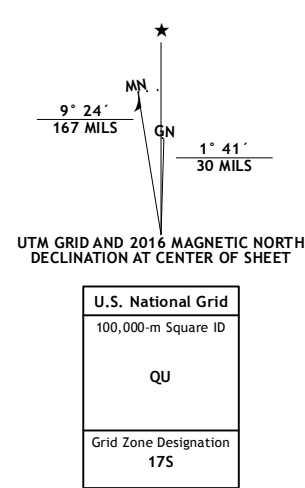
WARSAW NORTH QUADRANGLE
NORTH CAROLINA-DUPLIN CO.
7.5-MINUTE SERIES



Produced by the United States Geological Survey
 North American Datum of 1983 (NAD83)
 World Geodetic System of 1984 (WGS84) Projection and
 1 000-meter grid: Universal Transverse Mercator, Zone 17S
 10 000-foot ticks: North Carolina Coordinate System of 1983

This map is not a legal document. Boundaries may be generalized for this map scale. Private lands within government reservations may not be shown. Obtain permission before entering private lands.

Imagery.....NAIP, May 2014
 Roads.....U.S. Census Bureau, 2015 - 2016
 Names.....GNIS, 2016
 Hydrography.....National Hydrography Dataset, 2014
 Contours.....National Elevation Dataset, 2008
 Boundaries.....Multiple sources; see metadata file 1972 - 2016
 Wetlands.....FWS National Wetlands Inventory 1977 - 2014



QUADRANGLE LOCATION

1	2	3
4	5	6
7	8	

ADJOINING QUADRANGLES

1 Dobbersville
 2 Mount Olive
 3 Williams
 4 Faison
 5 Summerlins Crossroads
 6 Turkey
 7 Warsaw South
 8 Kenansville

WARSAW NORTH, NC
2016

