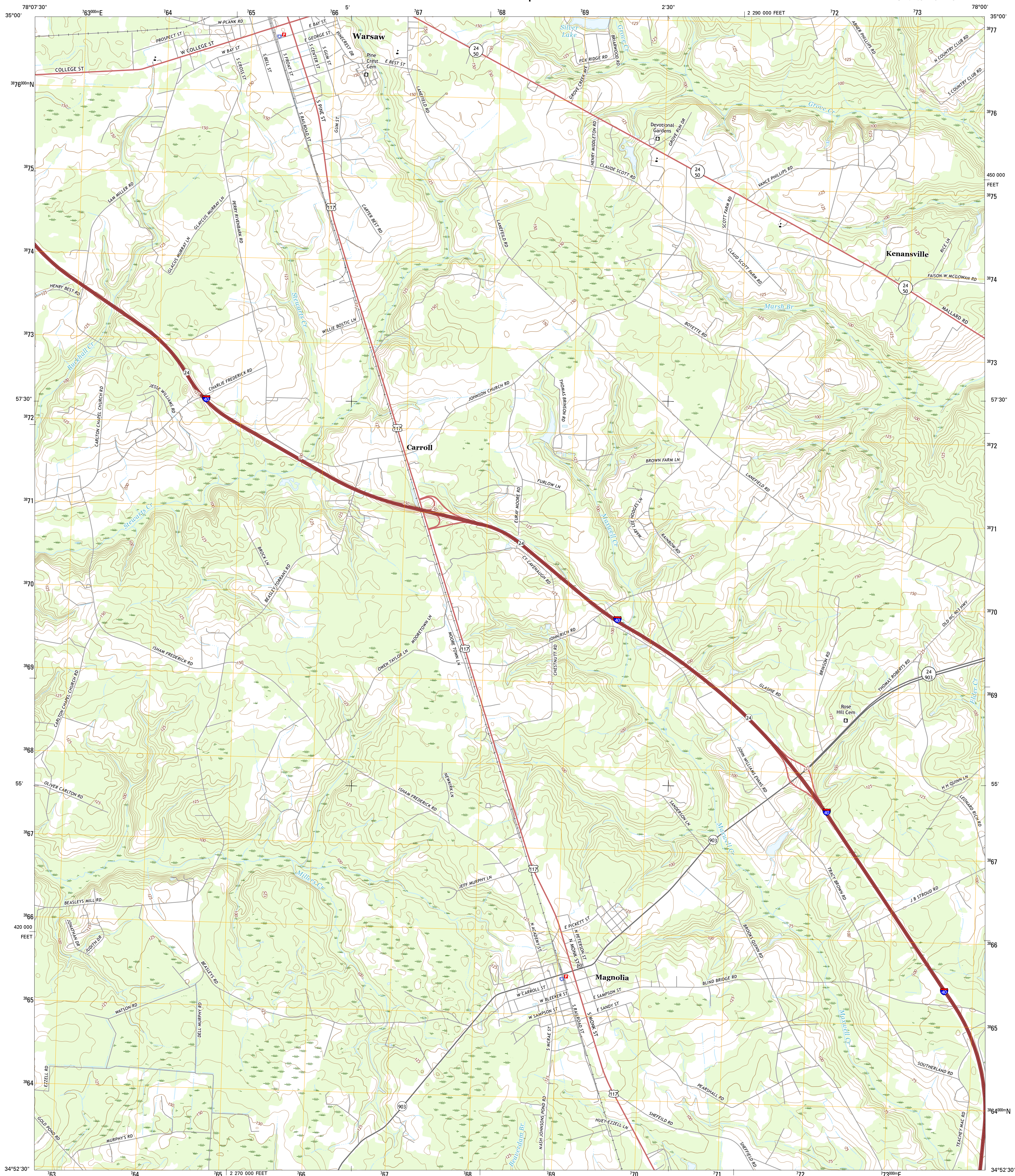




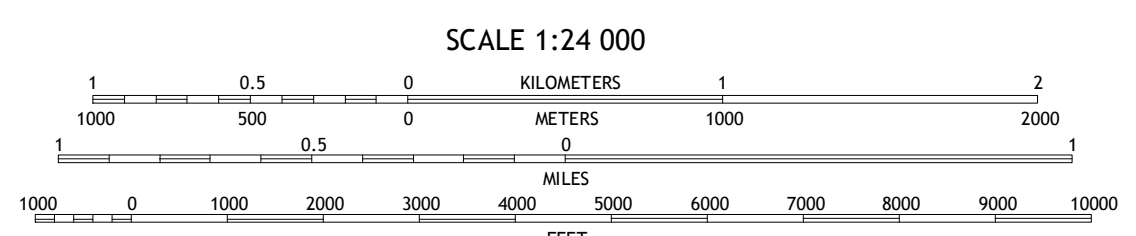
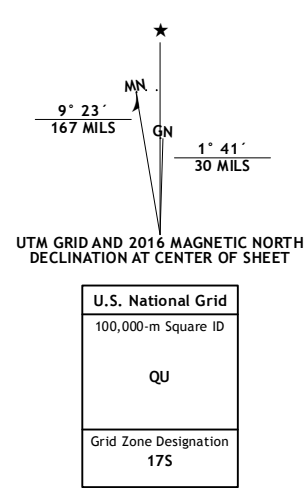
U.S. DEPARTMENT OF THE INTERIOR
U.S. GEOLOGICAL SURVEY



WARSAW SOUTH QUADRANGLE
NORTH CAROLINA-DUPLIN CO.
7.5-MINUTE SERIES



Produced by the United States Geological Survey
 North American Datum of 1983 (NAD83)
 World Geodetic System of 1984 (WGS84). Projection and
 1 000-meter grid: Universal Transverse Mercator, Zone 17S
 10 000-foot ticks: North Carolina Coordinate System of 1983
 This map is not a legal document. Boundaries may be
 generalized for this map scale. Private lands within government
 reservations may not be shown. Obtain permission before
 entering private lands.
 Imagery:.....NAIP, May 2014
 Roads:.....U.S. Census Bureau, 2015 - 2016
 Names:.....GNIS, 2016
 Hydrography:.....National Hydrography Dataset, 2014
 Contours:.....National Elevation Dataset, 2008
 Boundaries:.....Multiple sources; see metadata file 1972 - 2016
 Wetlands:.....FWS National Wetlands Inventory 1977 - 2014



ROAD CLASSIFICATION

Expressway	Local Connector
Secondary Hwy	Local Road
Ramp	4WD
Interstate Route	US Route
	State Route

ADJOINING QUADRANGLES

1	2	3
4	5	6
7	8	

1 Fatsion
2 Warsaw North
3 Summerlens Crossroads
4 Turkey
5 Kenansville
6 Delway
7 Rose Hill
8 Charity

CONTOUR INTERVAL 5 FEET
NORTH AMERICAN VERTICAL DATUM OF 1988
 This map was produced to conform with the
 National Geospatial Program US Topo Product Standard, 2011.
 A metadata file associated with this product is draft version 0.6.19

WARSAW SOUTH, NC
2016

