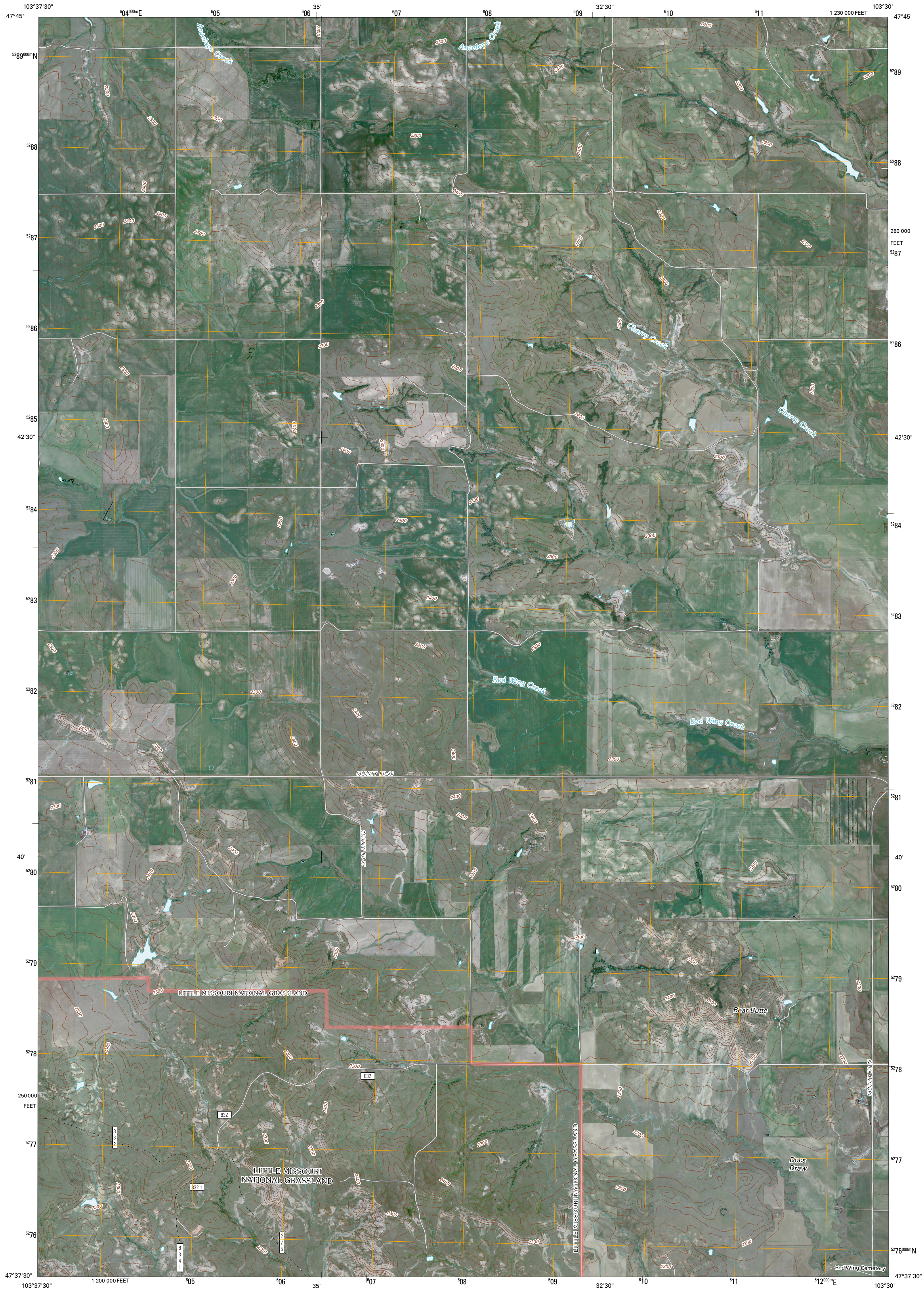




U.S. DEPARTMENT OF THE INTERIOR
U. S. GEOLOGICAL SURVEY

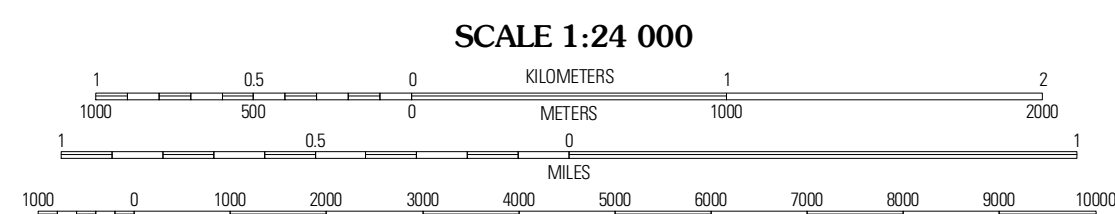
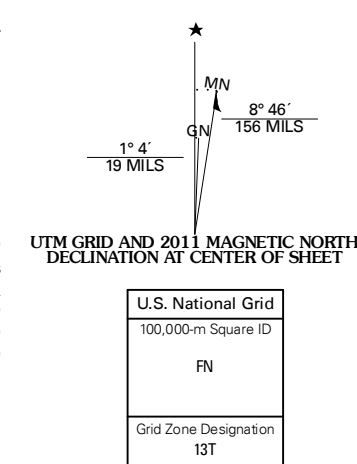


BEAR BUTTE QUADRANGLE
NORTH DAKOTA
7.5-MINUTE SERIES



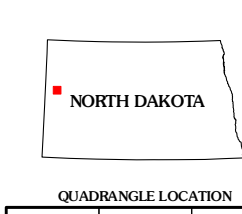
Produced by the United States Geological Survey
North American Datum of 1983 (NAD83)
World Geodetic System of 1984 (WGS84). Projection and
1 000-meter grid; Universal Transverse Mercator, Zone 13T
10 000-foot ticks: North Dakota Coordinate System of 1983
(north zone)

Imagery.....NAIP, July 2009
Roads.....2006-2010 Tele Atlas
Roads within US Forest Service Lands.....FSTopo Data
with Limited Forest Service updates, 2009
Names.....GNIS, 2009
Hydrography.....National Hydrography Dataset, 2009
Contours.....National Elevation Dataset, 2001

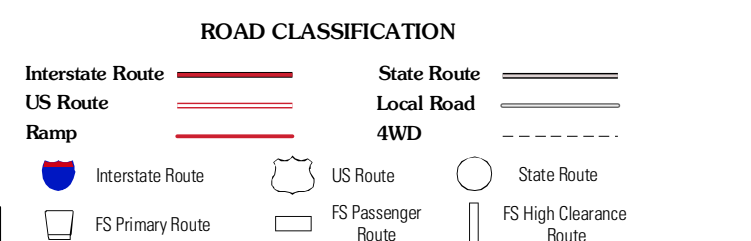


CONTOUR INTERVAL 20 FEET
NORTH AMERICAN VERTICAL DATUM OF 1988

This map was produced to conform with version 0.5.10 of the
draft USGS Standards for 7.5-Minute Quadrangle Maps.
A metadata file associated with this product is draft version 0.5.13



QUADRANGLE LOCATION		
Alexander	Rawson	Amesgard
Molise School	Bear Butte	Stickle Butte
Burning Minz Butte	Red Wing Creek	Sparatt Point



Check with local Forest Service unit
for current travel conditions and restrictions.

BEAR BUTTE, ND
2011

ADJOINING 7.5' QUADRANGLES