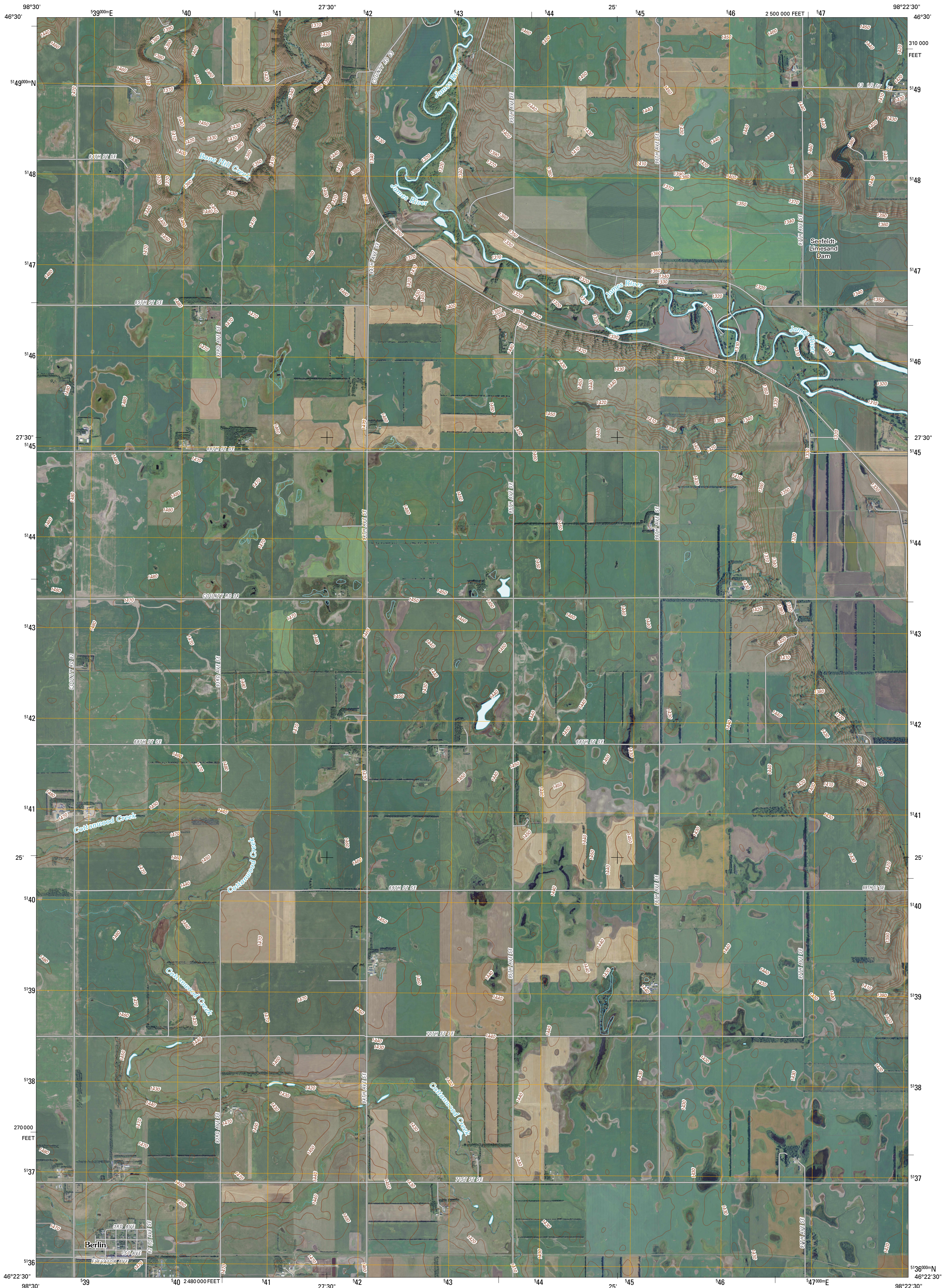




U.S. DEPARTMENT OF THE INTERIOR
U. S. GEOLOGICAL SURVEY

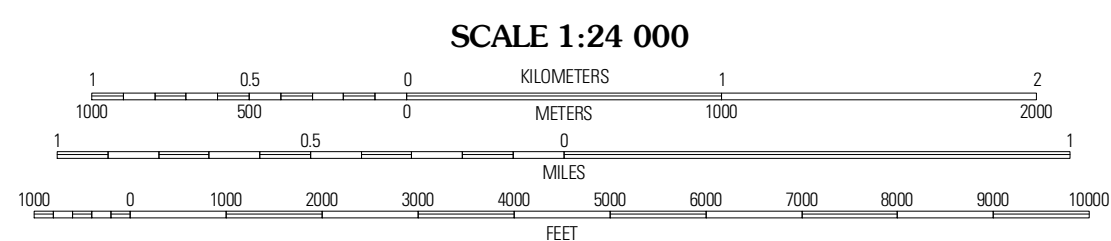
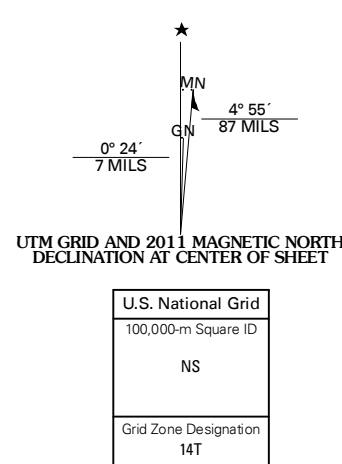


BERLIN QUADRANGLE
NORTH DAKOTA
7.5-MINUTE SERIES

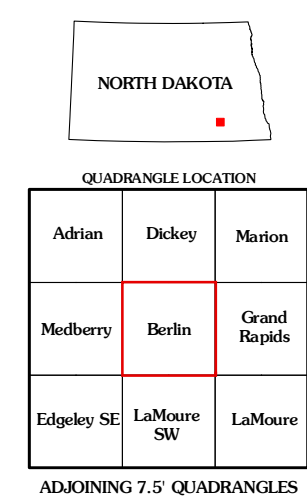


Produced by the United States Geological Survey
North American Datum of 1983 (NAD83)
World Geodetic System of 1984 (WGS84), Projection and
1 000-meter grid: Universal Transverse Mercator, Zone 14T
(south zone)

Imagery: NAIP, August 2009
Roads: ©2006-2010 Tele Atlas
Names: GNS, 2009
Hydrography: National Hydrography Dataset, 2009
Contours: National Elevation Dataset, 2007



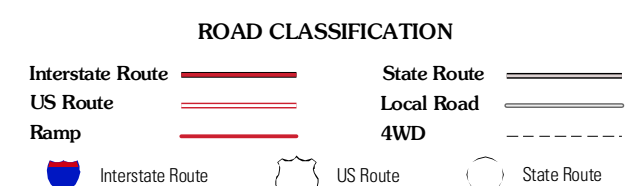
CONTOUR INTERVAL 10 FEET
NORTH AMERICAN VERTICAL DATUM OF 1988
This map was produced to conform with version 0.5.10 of the
draft USGS Standards for 7.5-Minute Quadrangle Maps.
A metadata file associated with this product is draft version 0.5.11



QUADRANGLE LOCATION

| | | |
|------------|------------|--------------|
| Adrian | Dickey | Marion |
| Medberry | Berlin | Grand Rapids |
| Edgeley SE | LaMoure SW | LaMoure |

ADJOINING 7.5' QUADRANGLES



BERLIN, ND
2011