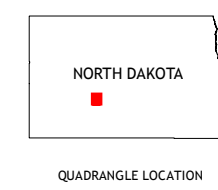
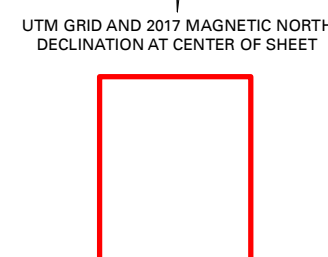
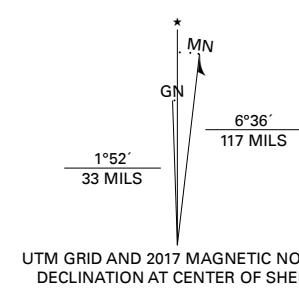


Produced by the United States Geological Survey

North American Datum of 1983 (NAD83)
World Geodetic System of 1984 (WGS84), Projection and
1 000-meter grid; Universal Transverse Mercator, Zone 14T
This map is not a legal document. Boundaries may be
generalized for this map scale. Private lands within government
reservations may not be shown. Obtain permission before
entering private lands.

Imagery.....NAIP, September 2015 - December 2015
Roads.....U.S. Census Bureau, 2016
Names.....GNS, 1980 - 1986
Hydrography.....National Hydrography Dataset, 2005 - 2015
Contours.....National Elevation Dataset, 2007 - 2009
Boundaries.....Multiple sources; see metadata file 2014 - 2016
Public Land Survey System.....BLM, 2016
Wetlands.....FWS National Wetlands Inventory 1979 - 1985

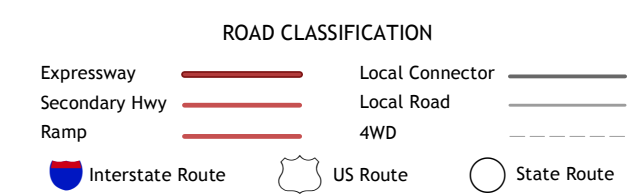


QUADRANGLE LOCATION

1	2	3
4	5	6
7	8	

ADJOINING QUADRANGLES

- 1 Red Butte SW
- 2 Otter Creek
- 3 Hannover
- 4 Hailstone Butte
- 5 New Salem NW
- 6 Dengate
- 7 North Almont
- 8 New Salem



CONTOUR INTERVAL 20 FEET
NORTH AMERICAN VERTICAL DATUM OF 1988
This map was produced to conform with the
National Geospatial Program US Topo Product Standard, 2011.
A metadata file associated with this product is draft version 0.6.18

