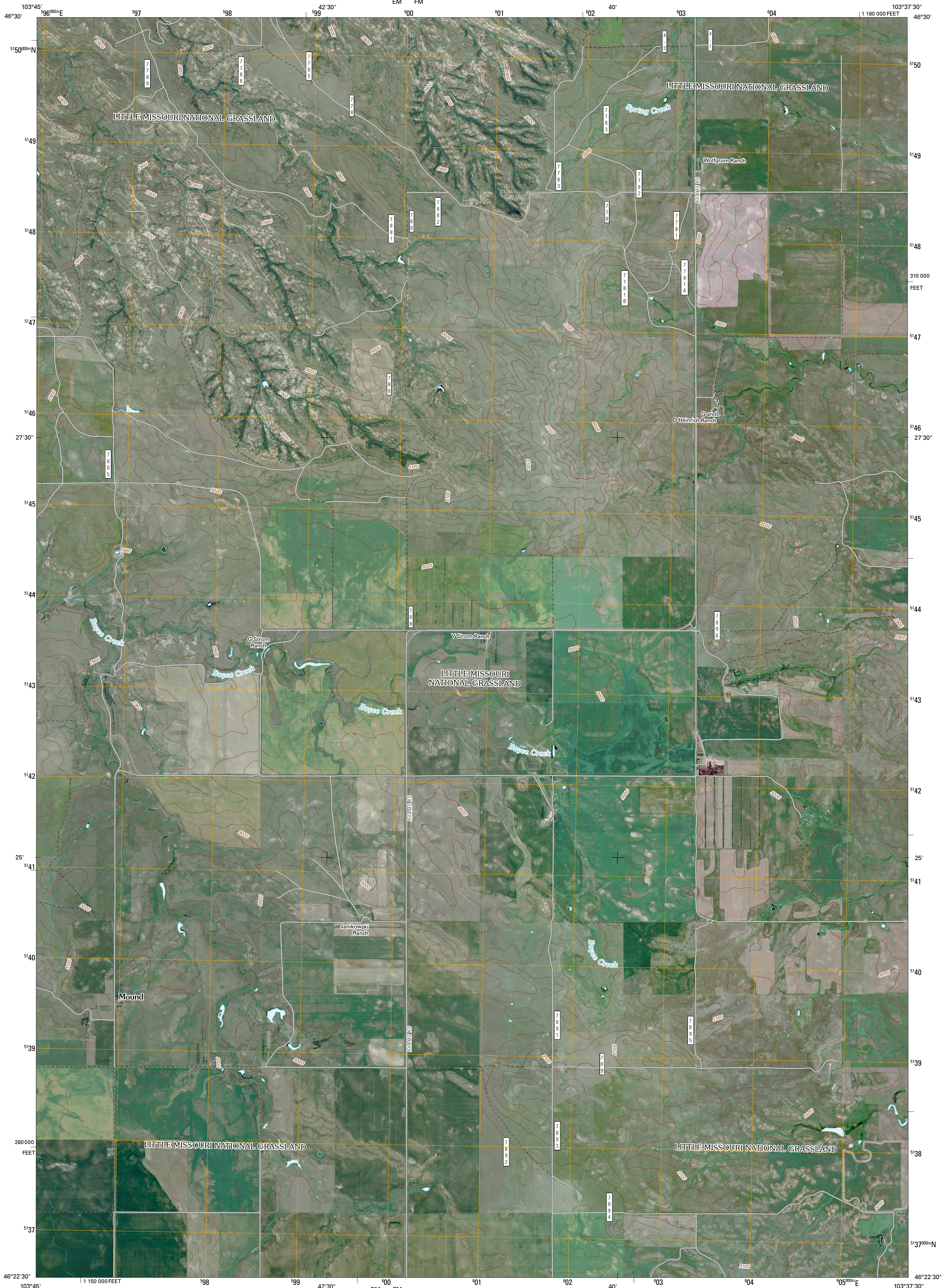




U.S. DEPARTMENT OF THE INTERIOR  
U. S. GEOLOGICAL SURVEY

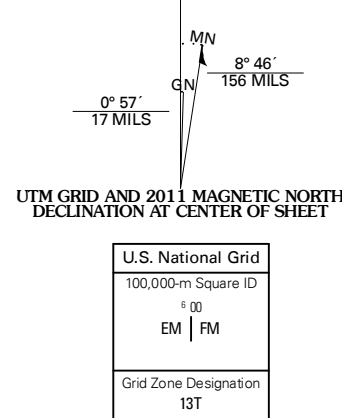


BOYCE CREEK EAST QUADRANGLE  
NORTH DAKOTA  
7.5-MINUTE SERIES

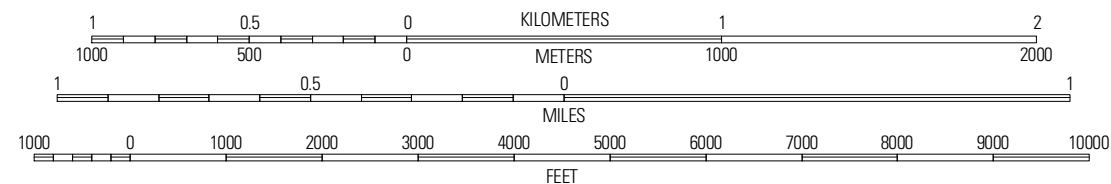


Produced by the United States Geological Survey  
North American Datum of 1983 (NAD83)  
World Geodetic System of 1984 (WGS84). Projection and  
1 000-meter grid: Universal Transverse Mercator, Zone 13T  
10 000-foot ticks: North Dakota Coordinate System of 1983  
(south zone)

Imagery.....NAIP, August 2009  
Roads.....©2006-2010 Tele Atlas  
Roads within US Forest Service Lands.....FS Topo Data  
with limited Forest Service updates, 2009  
Names.....GNIS, 2009  
Hydrography.....National Hydrography Dataset, 2009  
Contours.....National Elevation Dataset, 2005

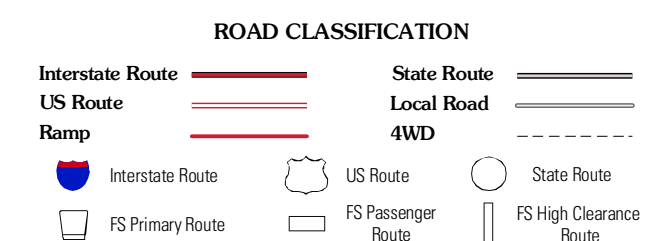
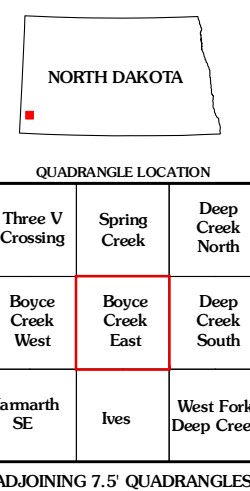


SCALE 1:24 000



CONTOUR INTERVAL 20 FEET  
NORTH AMERICAN VERTICAL DATUM OF 1988

This map was produced to conform with version 0.5.10 of the  
draft USGS Standards for 7.5-Minute Quadrangle Maps.  
A metadata file associated with this product is draft version 0.5.13



Check with local Forest Service unit  
for current travel conditions and restrictions.

BOYCE CREEK EAST, ND  
2011

QUADRANGLE LOCATION		
These V Crossing	Spring Creek	Deep Creek North
Boyce Creek West	Boyce Creek East	Deep Creek South
Momrath SE	Ives	West Fork Deep Creek