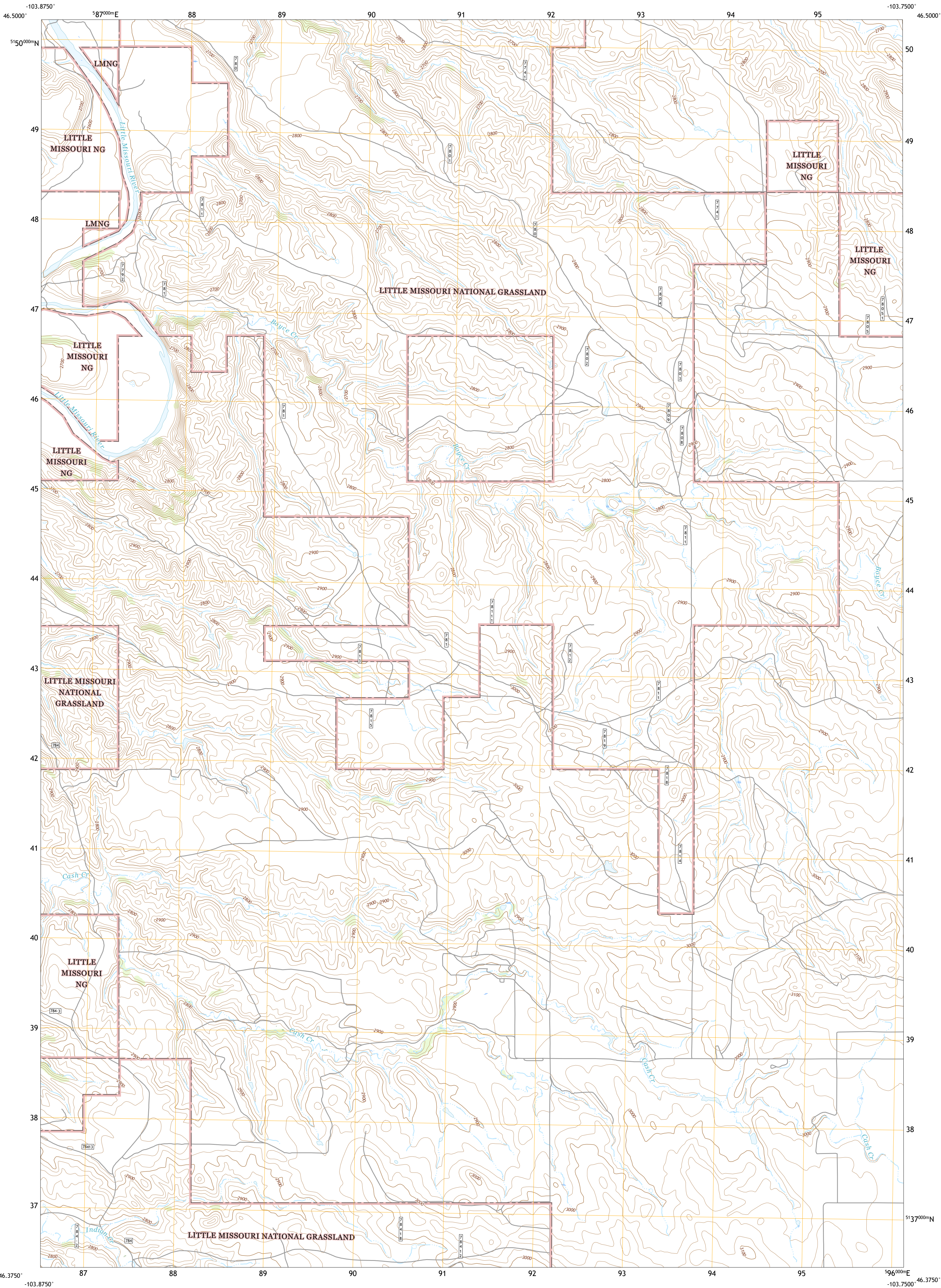




U.S. DEPARTMENT OF THE INTERIOR  
U.S. GEOLOGICAL SURVEY



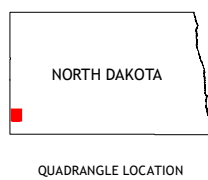
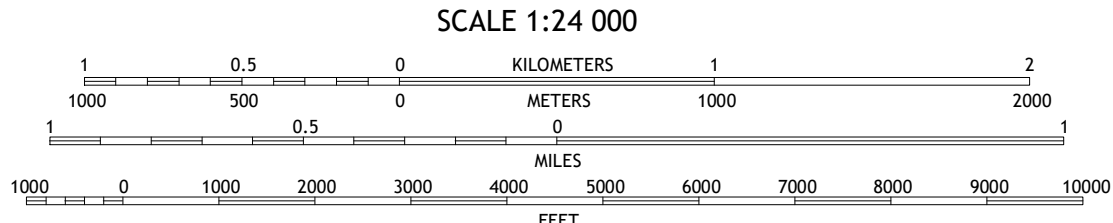
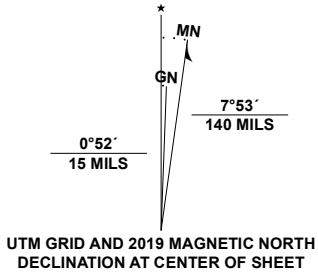
BOYCE CREEK WEST QUADRANGLE  
NORTH DAKOTA - SLOPE COUNTY  
7.5-MINUTE SERIES



Produced by the United States Geological Survey

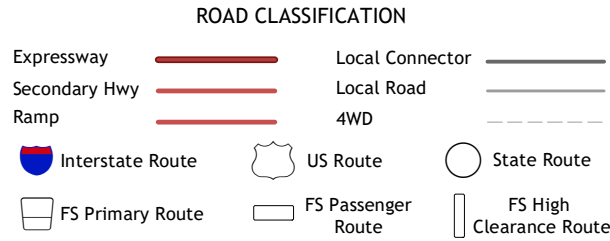
North American Datum of 1983 (NAD83)  
World Geodetic System of 1984 (WGS84). Projection and  
1 000-meter grid: Universal Transverse Mercator, Zone 13T  
This map is not a legal document. Boundaries may be  
generalized for this map scale. Private lands within government  
reservations may not be shown. Obtain permission before  
entering private lands.

Imagery.....N.A.P., June 2016 - September 2016  
Roads.....U.S. Census Bureau, 2016  
Roads within US Forest Service Lands.....FS Topo  
Data with limited Forest Service updates, 2013  
Names.....GNIS, 1992 - 2009  
Hydrography.....National Hydrography Dataset, 1899 - 2019  
Contours.....National Elevation Dataset, 2005  
Boundaries.....Multiple sources: see metadata file, 2018 - 2019  
Public Land Survey System.....BLM, 2018  
Wetlands.....FWS National Wetlands Inventory, 1983



1	2	3
4	5	6
7	8	9

1 Williams Lake  
2 Three V Crossing  
3 Spring Creek  
4 Pretty Butte  
5 Boyce Creek East  
6 Marmarth  
7 Marmarth SE  
8 Ives



Check with local Forest Service unit  
for current travel conditions and restrictions.

BOYCE CREEK WEST, ND  
2020

