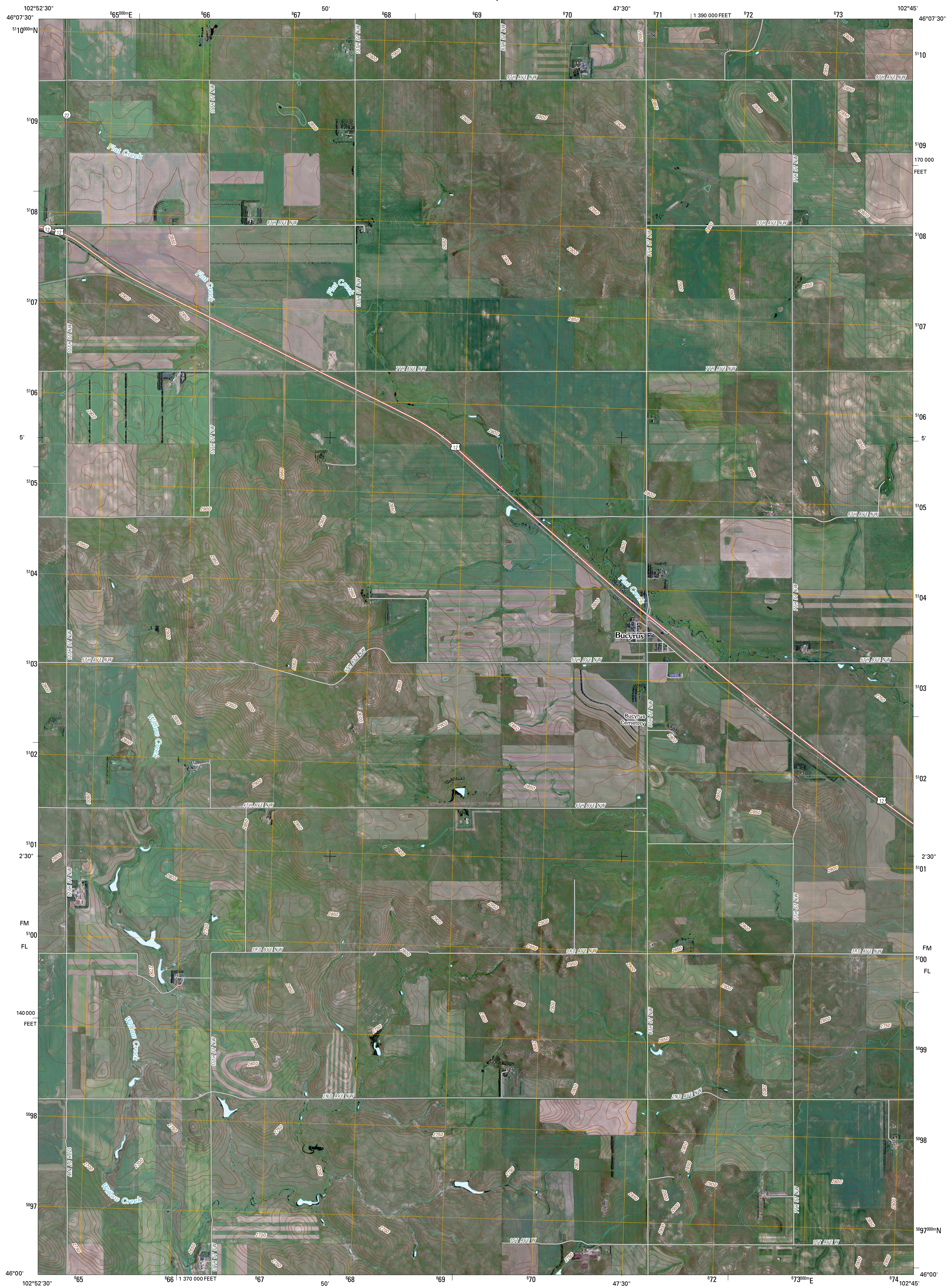




U.S. DEPARTMENT OF THE INTERIOR  
U. S. GEOLOGICAL SURVEY

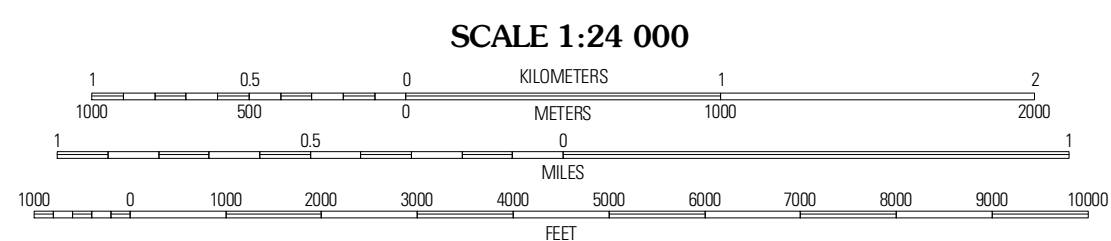
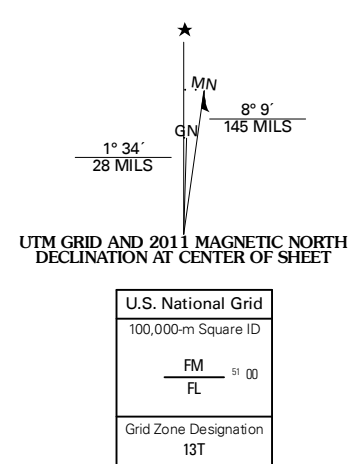


BUCYRUS QUADRANGLE  
NORTH DAKOTA  
7.5-MINUTE SERIES



Produced by the United States Geological Survey  
North American Datum of 1983 (NAD83)  
World Geodetic System of 1984 (WGS84). Projection and  
1 000-meter grid: Universal Transverse Mercator, Zone 13T  
10 000-foot ticks: North Dakota Coordinate System of 1983  
(south zone)

Imagery.....NAIP, June 2009  
Roads.....2006-2010 Tele Atlas  
Names.....GNIS, 2009  
Hydrography.....National Hydrography Dataset, 2009  
Contours.....National Elevation Dataset, 2009



CONTOUR INTERVAL 10 FEET  
NORTH AMERICAN VERTICAL DATUM OF 1988  
This map was produced to conform with version 0.5.10 of the  
draft USGS Standards for 7.5-Minute Quadrangle Maps.  
A metadata file associated with this product is draft version 0.5.11

**ROAD CLASSIFICATION**

Interstate Route	State Route
US Route	Local Road
Ramp	4WD

**QUADRANGLE LOCATION**

Whetstone Butte	Wolf Butte	Esker Lake
Reeder	Bucyrus	Hettinger North
Cow Butte	Cow Butte NE	Hettinger South

ADJOINING 7.5' QUADRANGLES

**ROAD CLASSIFICATION**  
 Interstate Route (thick red line)  
 US Route (red line)  
 State Route (thin red line)  
 Local Road (grey line)  
 4WD (dashed grey line)  
 Ramp (blue line)  
 Interstate Route (thick red line with shield)  
 US Route (red line with shield)  
 State Route (thin red line with shield)

BUCYRUS, ND  
2011