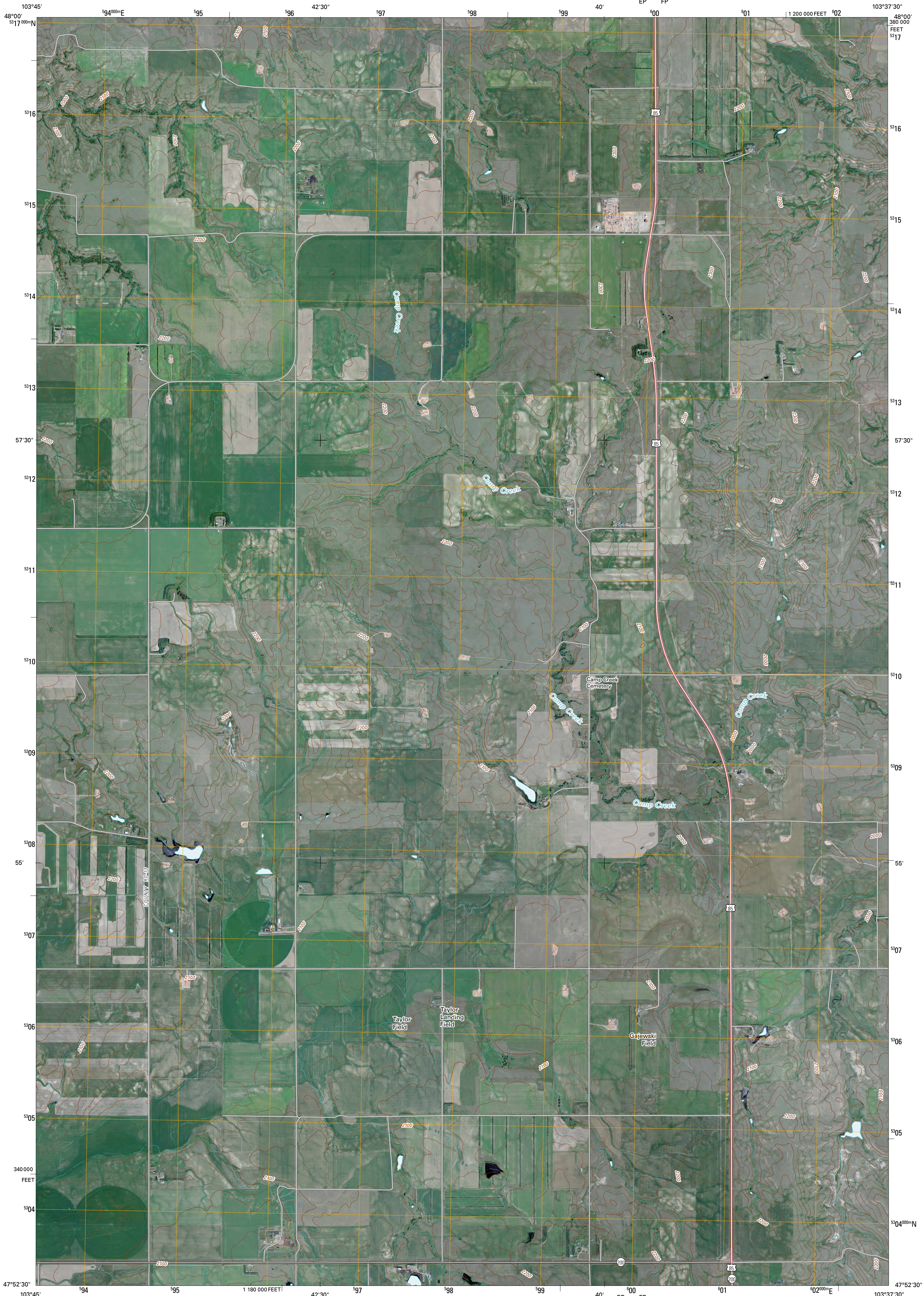




U.S. DEPARTMENT OF THE INTERIOR
U. S. GEOLOGICAL SURVEY

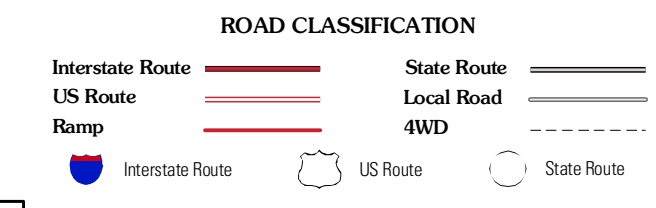
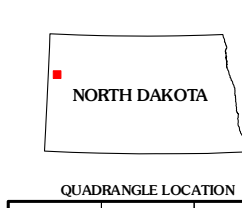
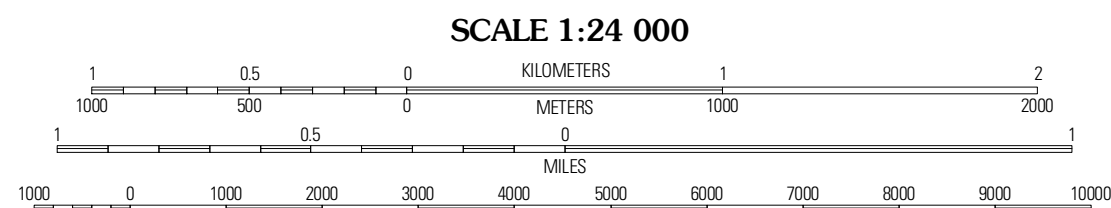
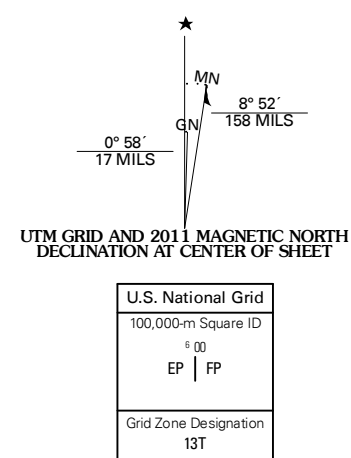


CAMP CREEK WEST QUADRANGLE
NORTH DAKOTA
7.5-MINUTE SERIES



Produced by the United States Geological Survey
North American Datum of 1983 (NAD83)
World Geodetic System of 1984 (WGS84) Projection and
1 000-meter grid; Universal Transverse Mercator, Zone 13T
10 000-foot ticks; North Dakota Coordinate System of 1983
(north zone)

Imagery:.....NAIP, July 2009
Roads:.....©2006-2010 Tele Atlas
Names:.....©2006-2010 Tele Atlas
Hydrography:.....National Hydrography Dataset, 2009
Contours:.....National Elevation Dataset, 2008



QUADRANGLE LOCATION

Trenton	Wilston SW	Wilston SE
Canaville NE	Camp Creek West	Camp Creek East
Charbonneau	Alexander	Rowson

ADJOINING 7.5' QUADRANGLES

CONTOUR INTERVAL 20 FEET
NORTH AMERICAN VERTICAL DATUM OF 1988
This map was produced to conform with version 0.5.10 of the
draft USGS Standards for 7.5-Minute Quadrangle Maps.
A metadata file associated with this product is draft version 0.5.11

CAMP CREEK WEST, ND
2011