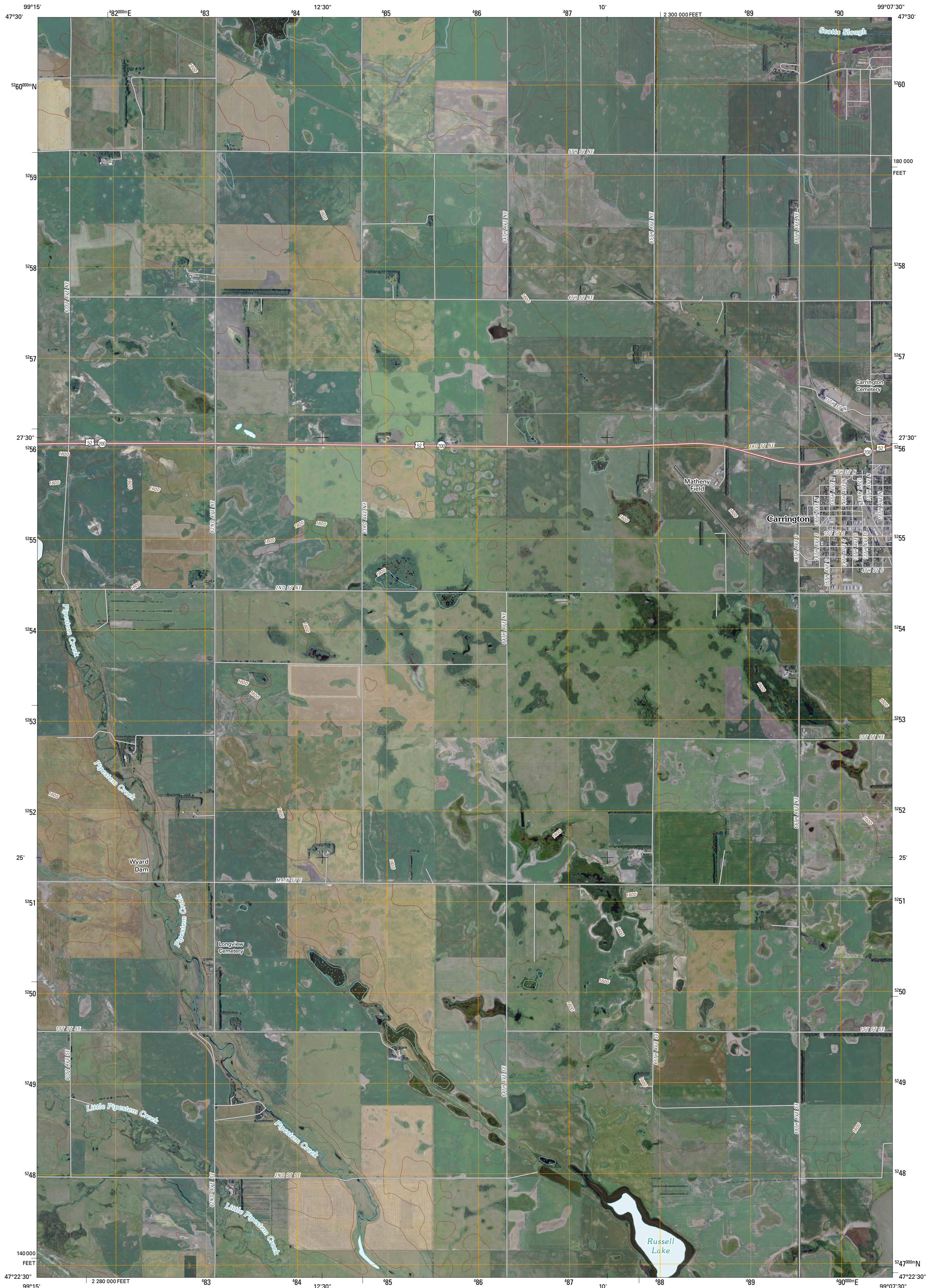




U.S. DEPARTMENT OF THE INTERIOR
U. S. GEOLOGICAL SURVEY

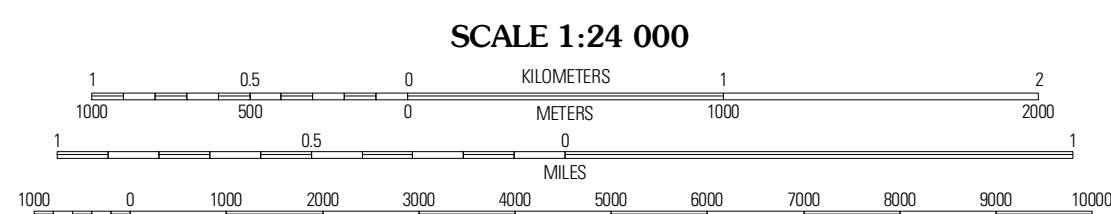
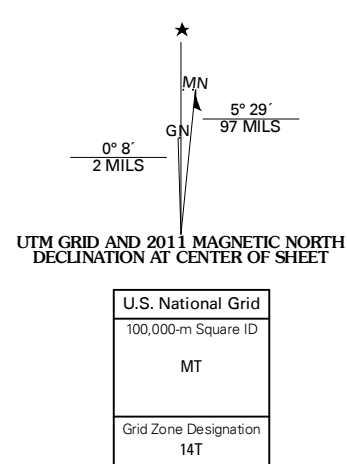


CARRINGTON WEST QUADRANGLE
NORTH DAKOTA
7.5-MINUTE SERIES



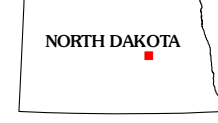
Produced by the United States Geological Survey
North American Datum of 1983 (NAD83)
Roads.....©2006-2010 Tele Atlas
World Geodetic System of 1984 (WGS84), Projection and
Hydrography.....National Hydrography Dataset, 2009
Contours.....National Elevation Dataset, 2009

Imagery.....NAIP, August 2009
Roads.....©2006-2010 Tele Atlas
World Geodetic System of 1984 (WGS84), Projection and
Hydrography.....National Hydrography Dataset, 2009
Contours.....National Elevation Dataset, 2009



CONTOUR INTERVAL 10 FEET
NORTH AMERICAN VERTICAL DATUM OF 1988

This map was produced to conform with version 0.5.10 of the
draft USGS Standards for 7.5-Minute Quadrangle Maps.
A metadata file associated with this product is draft version 0.5.11

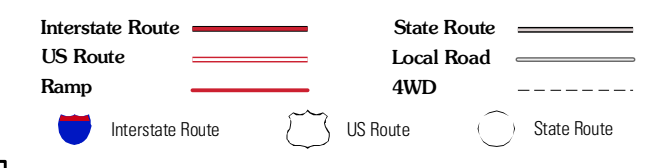


QUADRANGLE LOCATION

Cathay SE	Barlow	New Rockwood SE
Dover	Carrington West	Carrington East
Hanks Nest	Carrington SW	Melville

ADJOINING 7.5 QUADRANGLES

ROAD CLASSIFICATION



CARRINGTON WEST, ND
2011