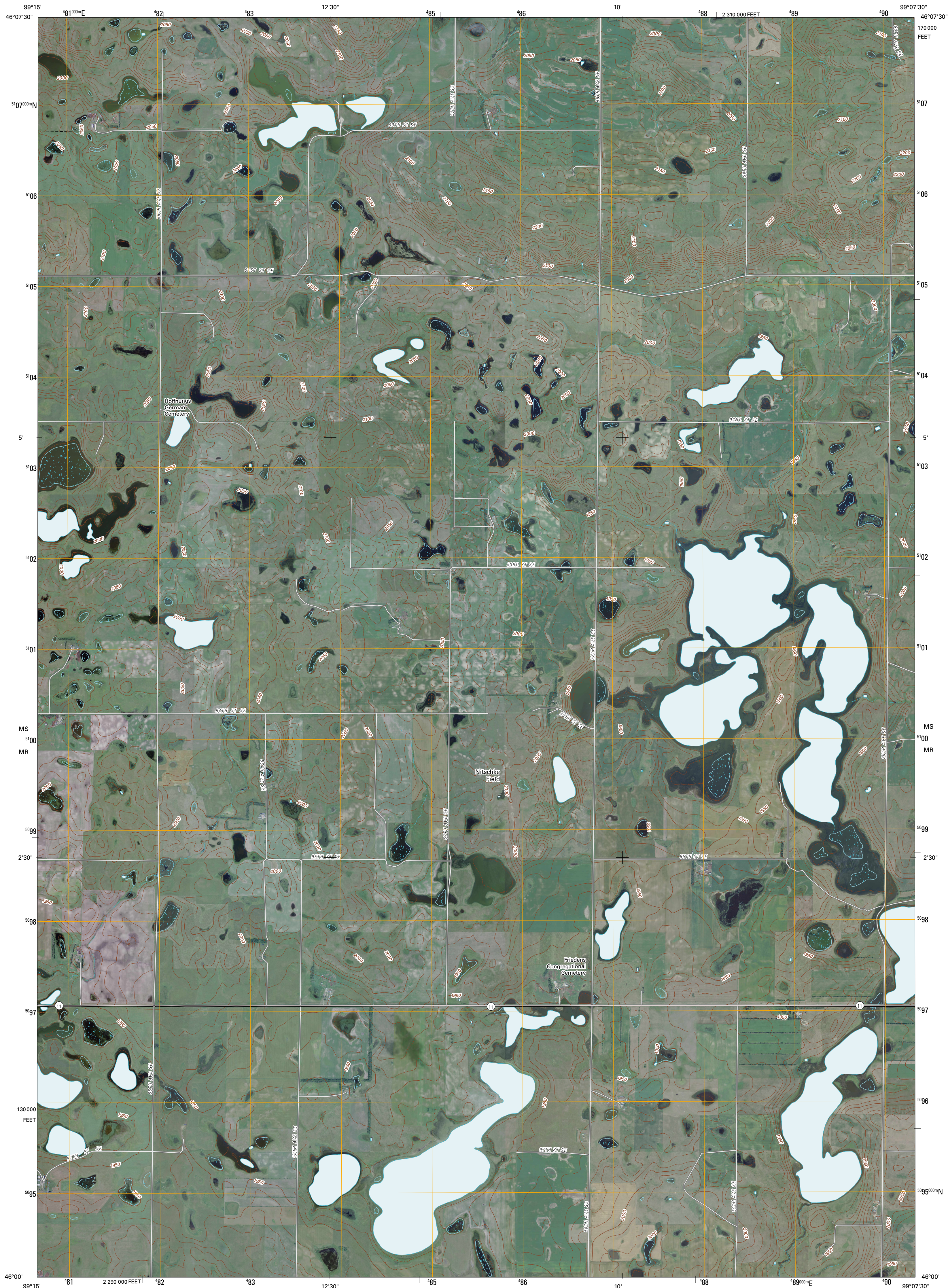




U.S. DEPARTMENT OF THE INTERIOR  
U. S. GEOLOGICAL SURVEY

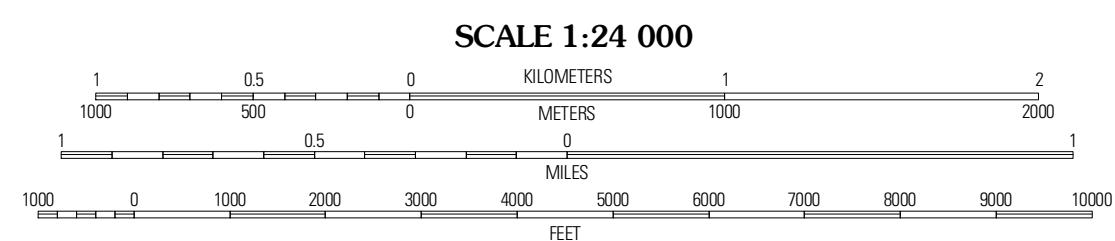
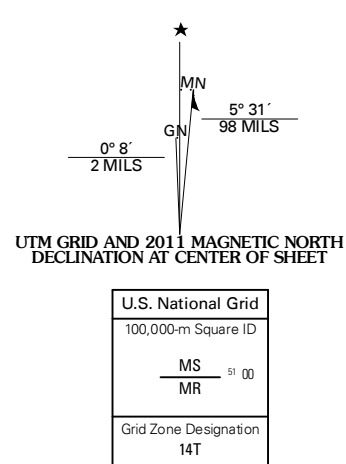


COLDWATER LAKE SW QUADRANGLE  
NORTH DAKOTA  
7.5-MINUTE SERIES



Produced by the United States Geological Survey  
North American Datum of 1983 (NAD83)  
World Geodetic System of 1984 (WGS84). Projection and  
1 000-meter grid: Universal Transverse Mercator, Zone 14T  
10 000-foot ticks: North Dakota Coordinate System of 1983  
(south zone)

Imagery.....NAIP, August 2009  
Roads.....62906-2010 File Atlas  
Names.....GNIS, 2009  
Hydrography.....National Hydrography Dataset, 2009  
Contours.....National Elevation Dataset, 2007



CONTOUR INTERVAL 10 FEET  
NORTH AMERICAN VERTICAL DATUM OF 1988

This map was produced to conform with version 0.5.10 of the  
draft USGS Standards for 7.5-Minute Quadrangle Maps.  
A metadata file associated with this product is draft version 0.5.11

