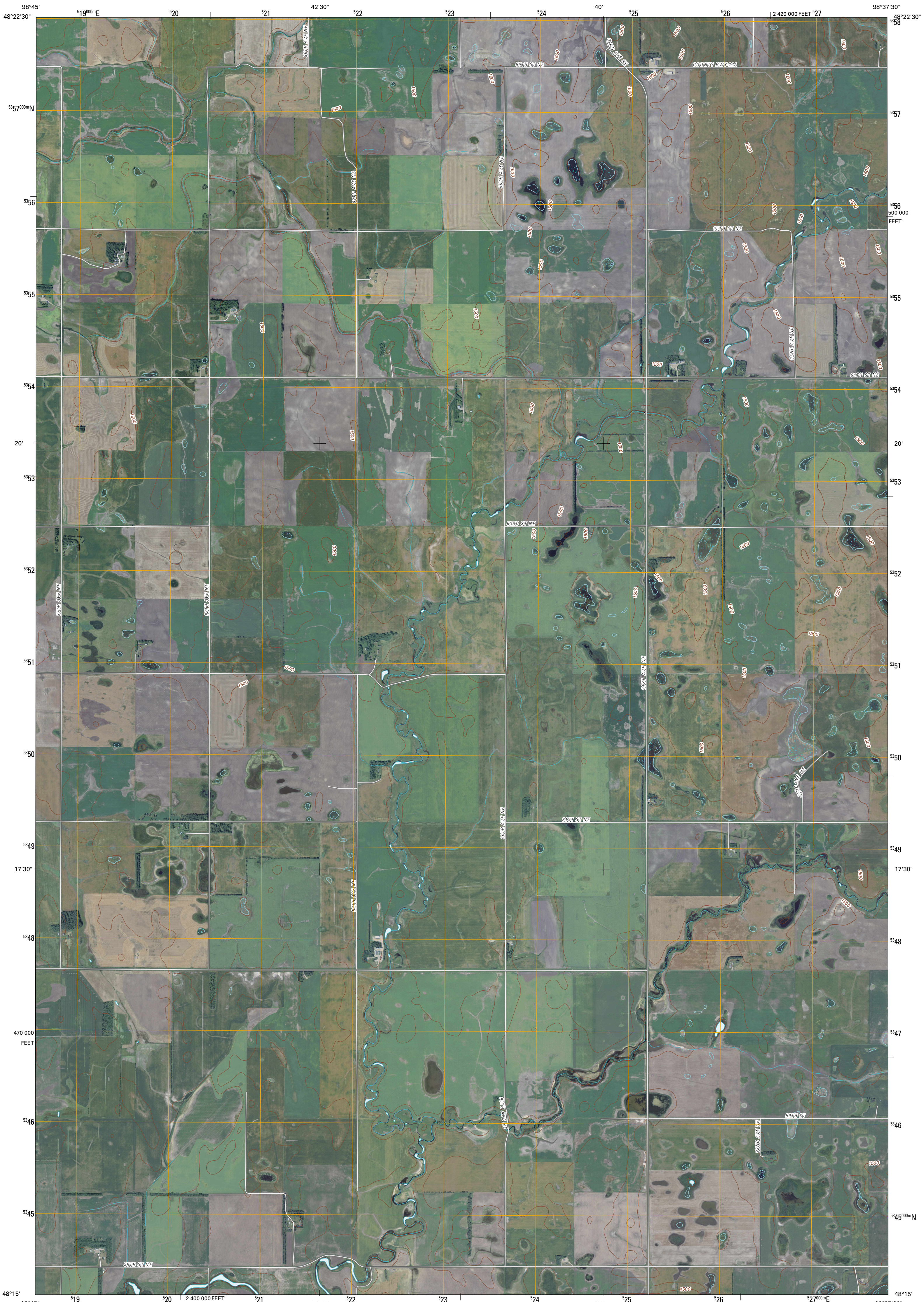




U.S. DEPARTMENT OF THE INTERIOR
U. S. GEOLOGICAL SURVEY



DERRICK SW QUADRANGLE
NORTH DAKOTA
7.5-MINUTE SERIES



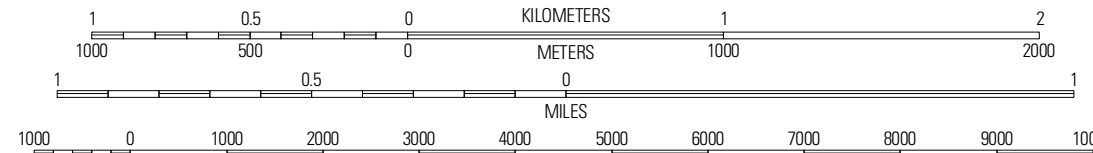
Produced by the United States Geological Survey
North American Datum of 1983 (NAD83)
World Geodetic System of 1984 (WGS84). Projection and
1 000-meter grid: Universal Transverse Mercator, Zone 14U
10 000-foot ticks: North Dakota Coordinate System of 1983
(north zone)

Imagery.....NAIP, August 2009
Roads.....©2006-2010 Tele Atlas
Names.....GNIS, 2009
Hydrography.....National Hydrography Dataset, 2009
Contours.....National Elevation Dataset, 1999

UTM GRID AND 2011 MAGNETIC NORTH
DECLINATION AT CENTER OF SHEET

| |
|---|
| U.S. National Grid 100,000-m Square ID |
| NU |
| Grid Zone Designation 14U |

SCALE 1:24 000



CONTOUR INTERVAL 10 FEET
NORTH AMERICAN VERTICAL DATUM OF 1988

This map was produced to conform with version 0.5.10 of the
draft USGS Standards for 7.5-Minute Quadrangle Maps.
A metadata file associated with this product is draft version 0.5.11



QUADRANGLE LOCATION

| | | |
|--------------------|------------|------------|
| Starkweather NE | Derrick NW | Derrick |
| Starkweather SE | Derrick SW | Derrick SE |
| Sweetwater | Cray NW | Southam |

ADJOINING 7.5' QUADRANGLES

ROAD CLASSIFICATION

| | |
|------------------|-------------|
| Interstate Route | State Route |
| US Route | Local Road |
| Ramp | 4WD |

DERRICK SW, ND
2011