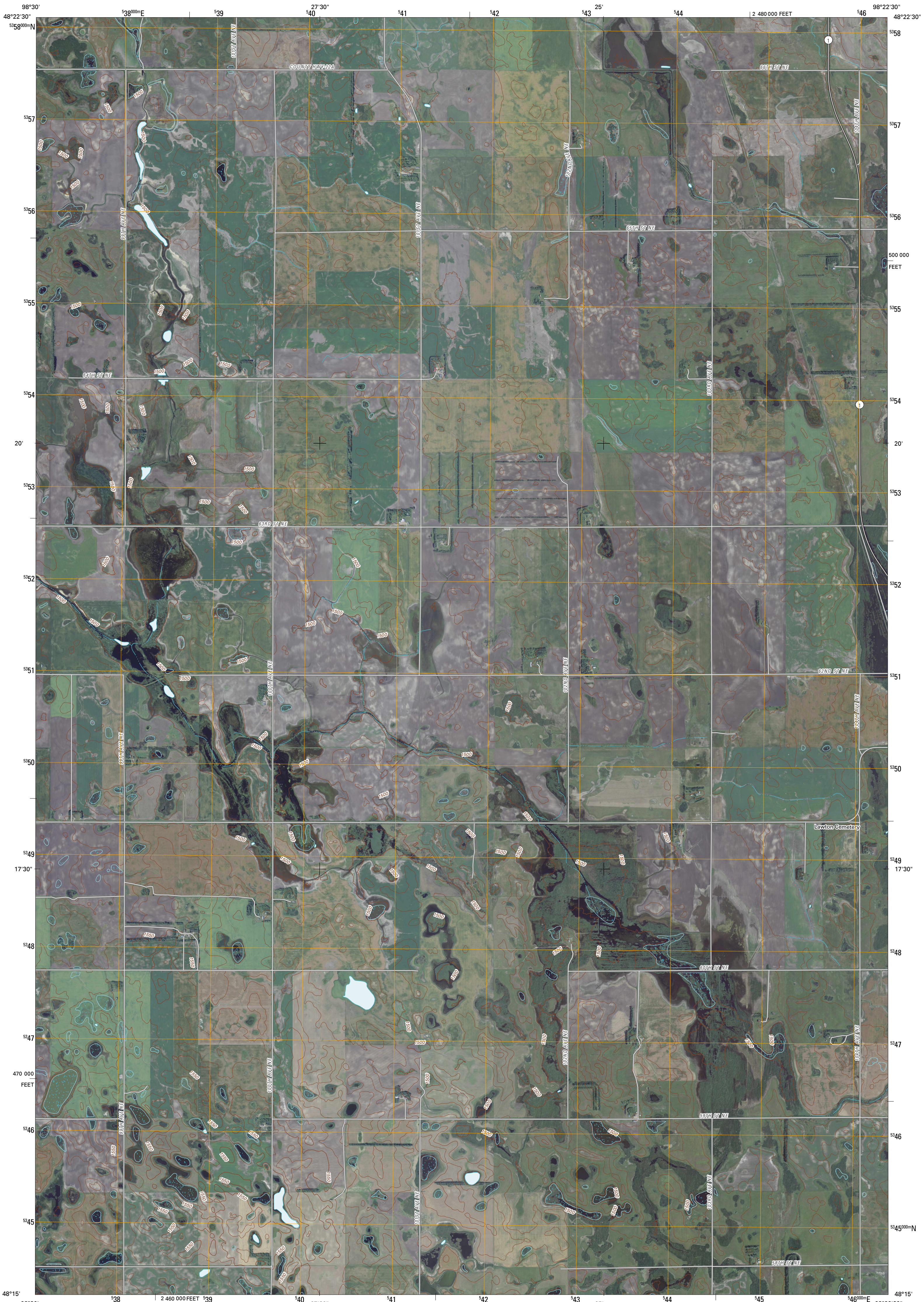




U.S. DEPARTMENT OF THE INTERIOR  
U. S. GEOLOGICAL SURVEY



EDMORE SW QUADRANGLE  
NORTH DAKOTA  
7.5-MINUTE SERIES



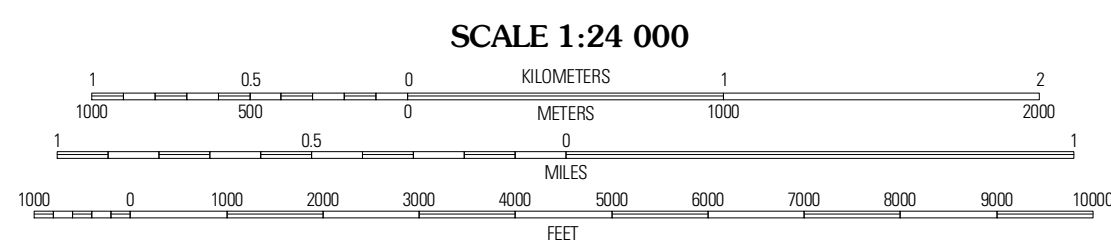
Produced by the United States Geological Survey  
North American Datum of 1983 (NAD83)  
World Geodetic System of 1984 (WGS84). Projection and  
1 000-meter grid: Universal Transverse Mercator, Zone 14U  
10 000-foot ticks: North Dakota Coordinate System of 1983  
(north zone)

Imagery.....NAIP, August 2009  
Roads.....62906-2010 Tpk Atlas  
Names.....GNIS, 2009  
Hydrography.....National Hydrography Dataset, 2009  
Contours.....National Elevation Dataset, 1999

UTM GRID AND 2011 MAGNETIC NORTH DECLINATION AT CENTER OF SHEET

U.S. National Grid 100,000m Square ID	NU
Grid Zone Designation	14U

0° 26' 48" N  
4° 50' 00" N  
88 MILES



QUADRANGLE LOCATION

Derrick	Edmore	Edmore NE
Derrick SE	Edmore SW	Lawton
Southam	Lakota NW	Brocket

ADJOINING 7.5' QUADRANGLES

ROAD CLASSIFICATION

Interstate Route	State Route
US Route	Local Road
Ramp	4WD

Interstate Route US Route State Route

CONTOUR INTERVAL 10 FEET  
NORTH AMERICAN VERTICAL DATUM OF 1988

This map was produced to conform with version 0.5.10 of the  
draft USGS Standards for 7.5-Minute Quadrangle Maps.  
A metadata file associated with this product is draft version 0.5.11

EDMORE SW, ND  
2011