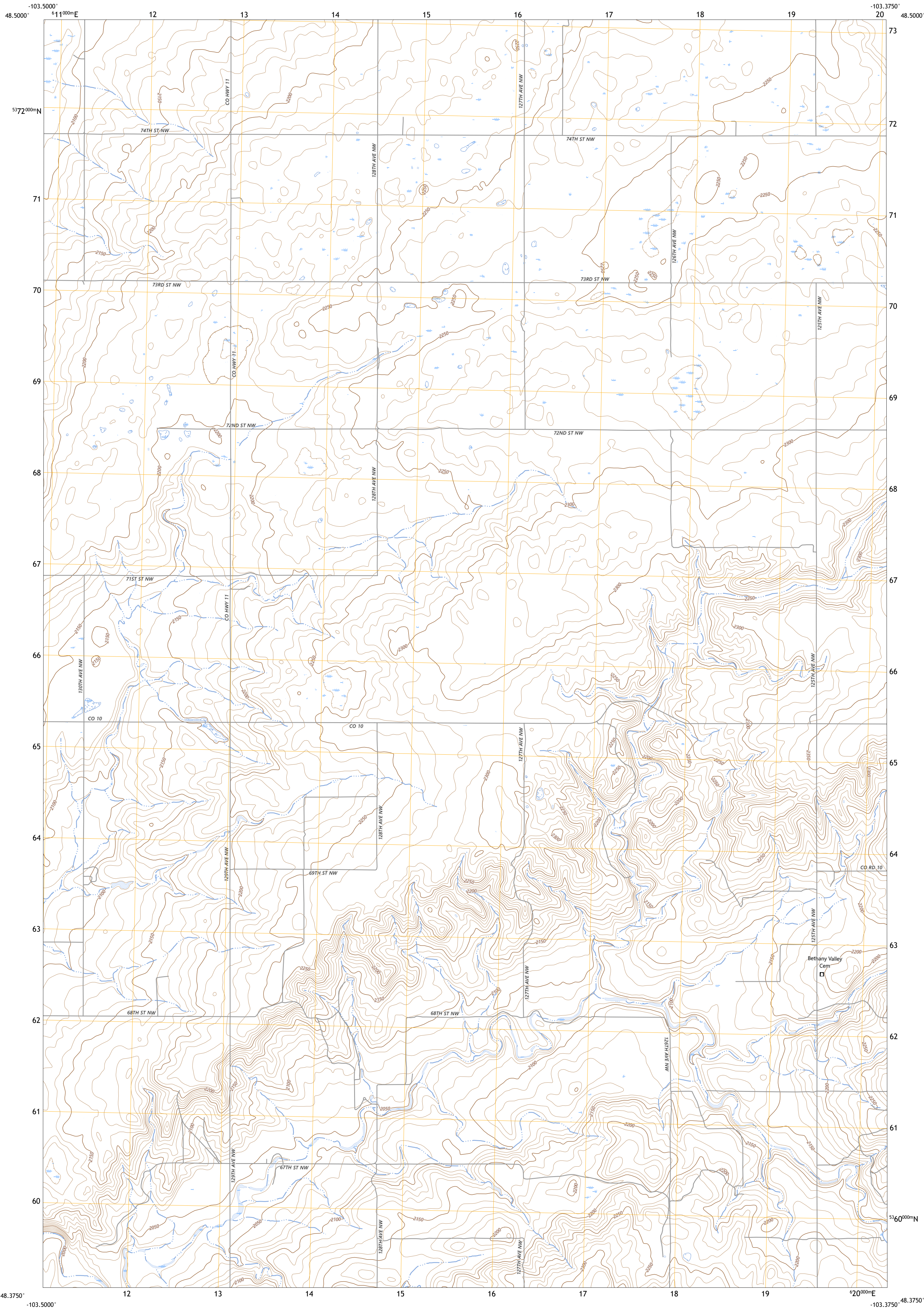




U.S. DEPARTMENT OF THE INTERIOR
U.S. GEOLOGICAL SURVEY



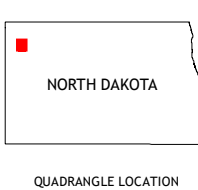
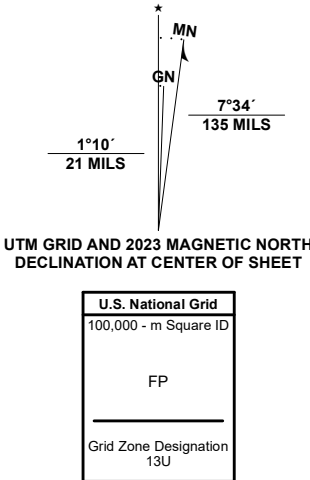
EPPING NW QUADRANGLE
NORTH DAKOTA - WILLIAMS COUNTY
7.5-MINUTE SERIES



Produced by the United States Geological Survey

North American Datum of 1983 (NAD83)
World Geodetic System of 1984 (WGS84) - Projection and
1 000-meter grid; Universal Transverse Mercator, Zone 13U
This map is not a legal document. Boundaries may be
generalized for this map scale. Private lands within government
reservations may not be shown. Obtain permission before
entering private lands.

Imagery.....NAIP, July 2020 - July 2020
Roads.....U.S. Census Bureau, 2016
Names.....GNIS, Not Available
Hydrography.....National Hydrography Dataset, 2005 - 2020
Contours.....National Elevation Dataset, 2008
Boundaries.....Multiple sources; see metadata file 2021 - 2022
Public Land Survey System.....BLM, 2018
Wetlands.....FWS National Wetlands Inventory 1982 - 1983



1	2	3
4	5	6
7	8	9

1 Appam
2 Alamo
3 Corinth
4 Twin Lakes
5 Epping NE
6 Blacktail Lake SE
7 Spring Brook
8 Epping

ROAD CLASSIFICATION
Expressway
Secondary Hwy
Ramp
Interstate Route
Local Connector
Local Road
4WD
US Route
State Route

EPPING NW, ND
2024

