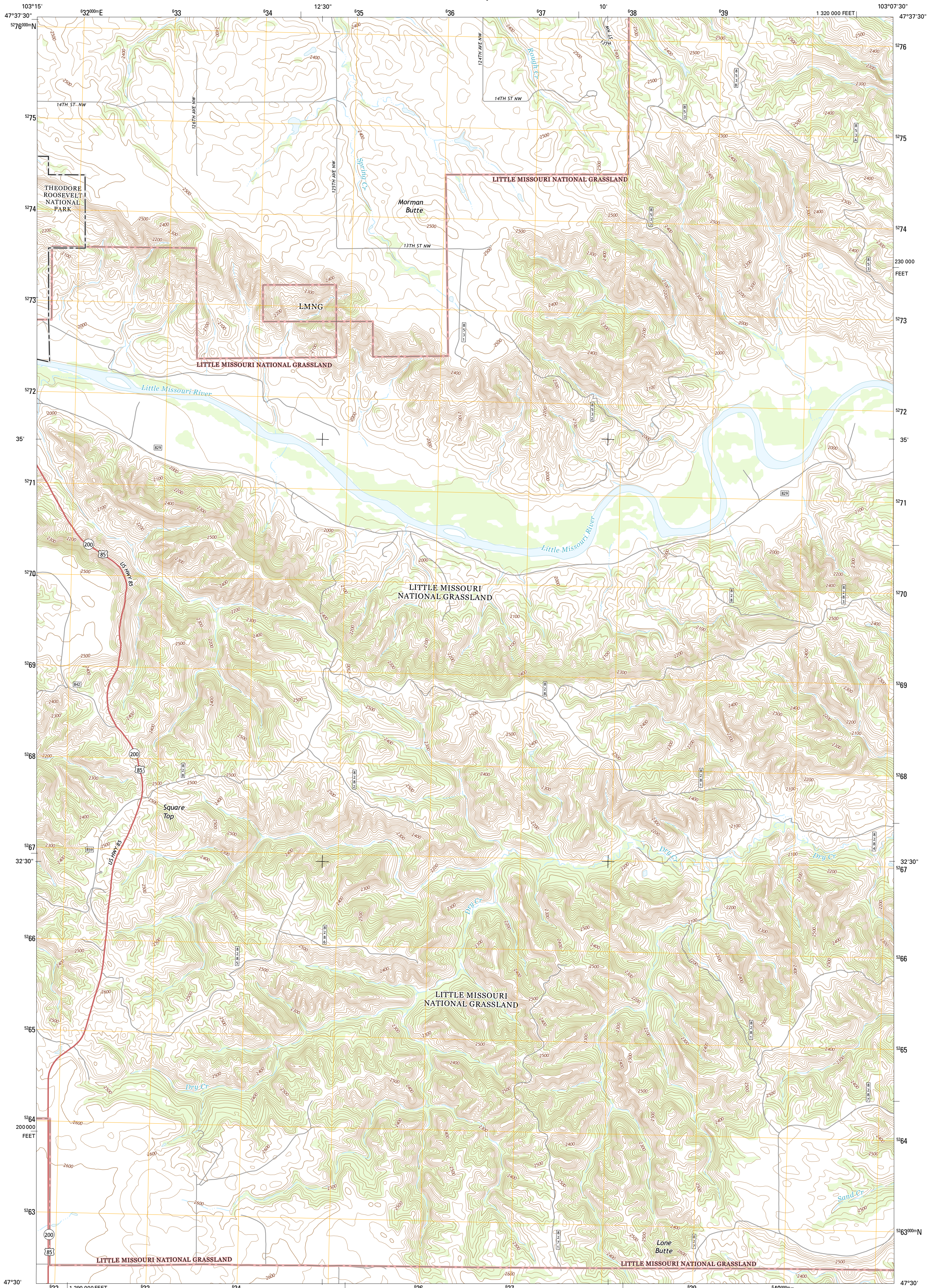




U.S. DEPARTMENT OF THE INTERIOR
U.S. GEOLOGICAL SURVEY



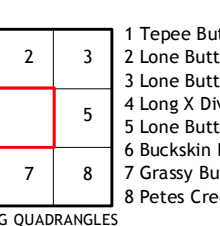
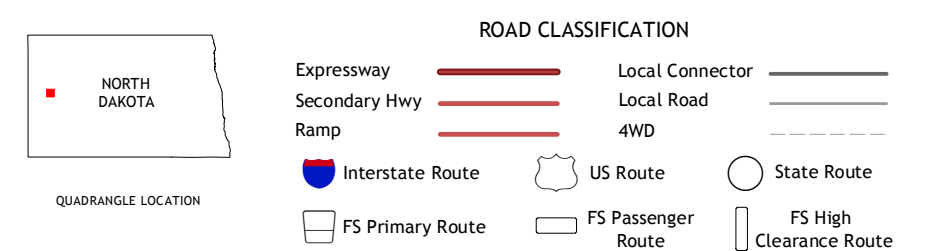
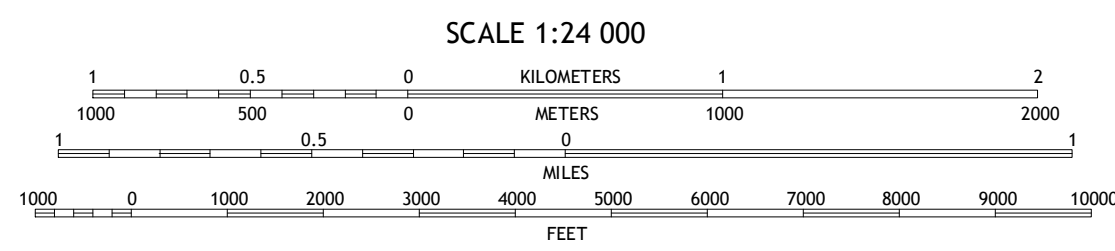
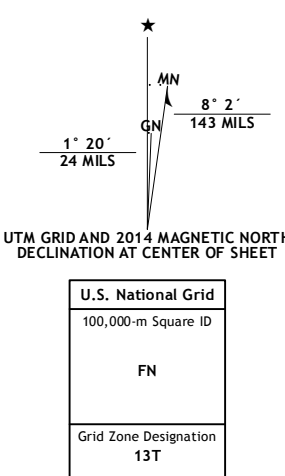
LONE BUTTE QUADRANGLE
NORTH DAKOTA-MCKENZIE CO.
7.5-MINUTE SERIES



Produced by the United States Geological Survey
North American Datum of 1983 (NAD83)
World Geodetic System of 1984 (WGS84). Projection and
1 000-meter grid: Universal Transverse Mercator, Zone 13T
10 000-foot ticks: North Dakota Coordinate System of 1983
(north zone)

This map is not a legal document. Boundaries may be
generalized for this map scale. Private lands within government
reservations may not be shown. Obtain permission before
entering private lands.

Imagery.....NAIP June 2012
Roads.....HERE 62013
Roads within US Forest Service Lands.....FS Topo Data
with limited Forest Service updates, 2013
Names.....GNIS, 2013
Hydrography.....National Hydrography Dataset, 2012
Contours.....National Elevation Dataset, 2001
Boundaries.....Multiple sources; see metadata file 1972 - 2013



ADJOINING QUADRANGLES

1	2	3
4	5	6
7	8	

- 1 Teepee Buttes
- 2 Lone Butte NW
- 3 Lone Butte NE
- 4 Lone X Divide
- 5 Lone Butte SE
- 6 Bucksin Butte
- 7 Grassy Butte
- 8 Petes Creek

LONE BUTTE, ND
2014

