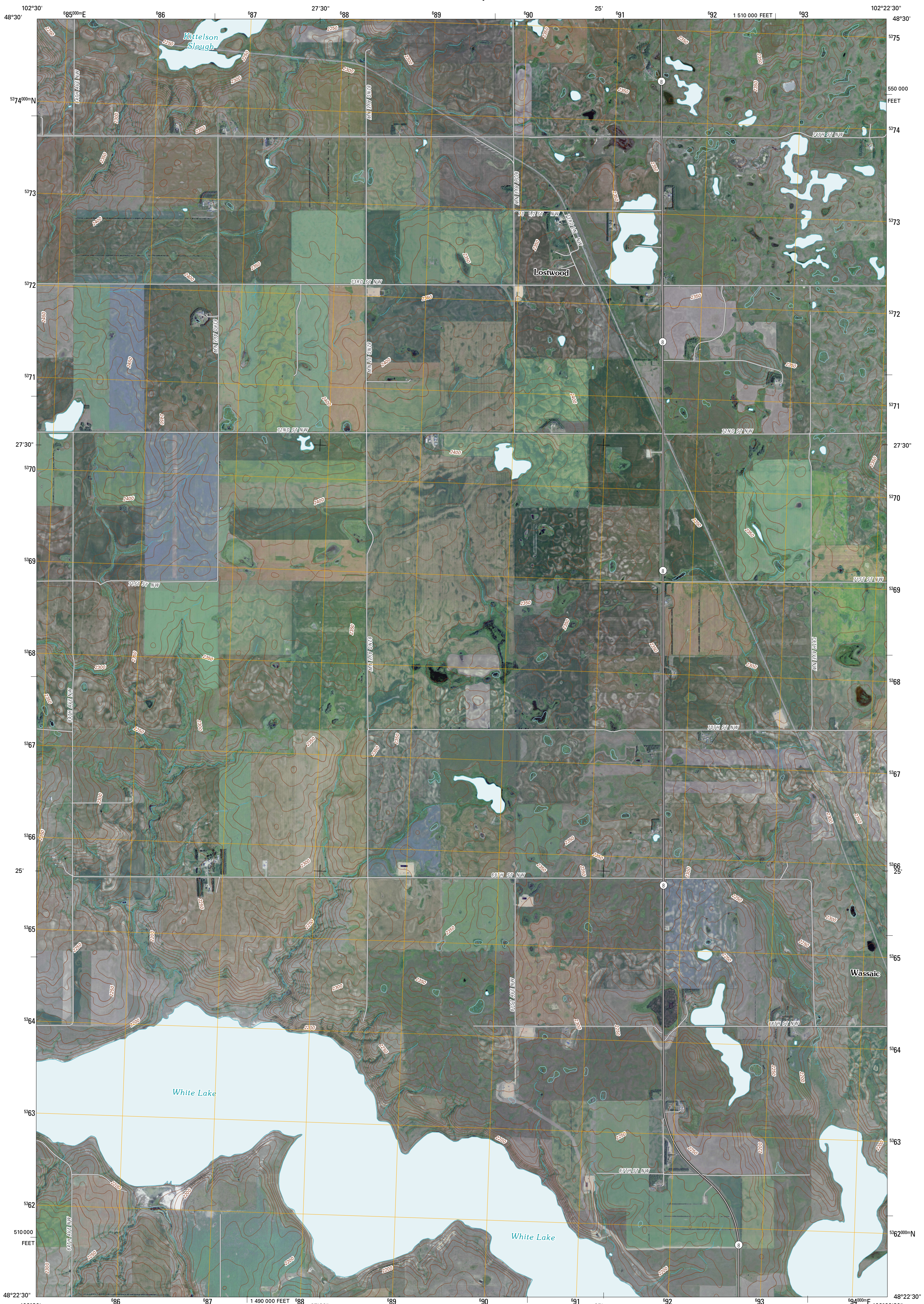




U.S. DEPARTMENT OF THE INTERIOR
U. S. GEOLOGICAL SURVEY



LOSTWOOD QUADRANGLE
NORTH DAKOTA
7.5-MINUTE SERIES

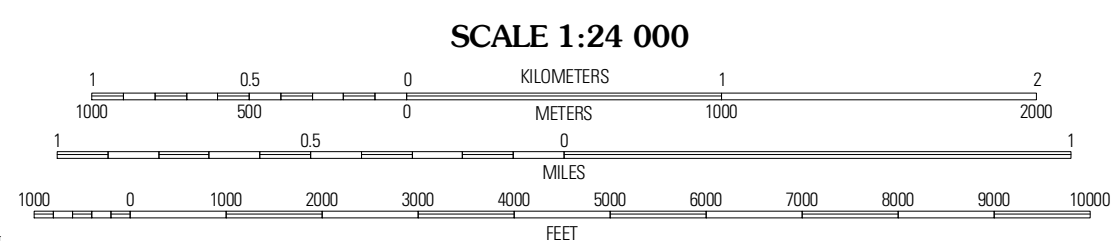


Produced by the United States Geological Survey
North American Datum of 1983 (NAD83)
World Geodetic System of 1984 (WGS84). Projection and
1 000-meter grid; Universal Transverse Mercator, Zone 13U
10 000-foot ticks; North Dakota Coordinate System of 1983
(north zone)

Imagery.....NAP, August 2009
Roads.....2006-2010 File Atlas
Names.....GNIS, 2009
Hydrography.....National Hydrography Dataset, 2009
Contours.....National Elevation Dataset, 2008

UTM GRID AND 2011 MAGNETIC NORTH
DECLINATION AT CENTER OF SHEET

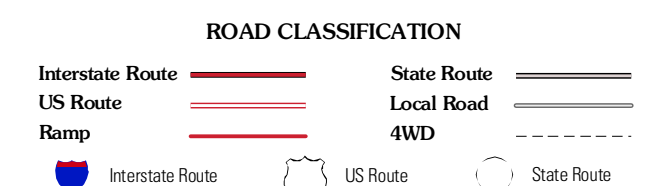
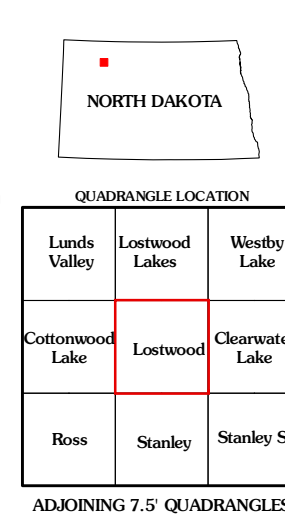
U.S. National Grid 100 000-Meter Square ID
FP
Grid Zone Designation 13U



SCALE 1:24 000

CONTOUR INTERVAL 10 FEET
NORTH AMERICAN VERTICAL DATUM OF 1988

This map was produced to conform with version 0.5.10 of the
draft USGS Standards for 7.5-Minute Quadrangle Maps.
A metadata file associated with this product is draft version 0.5.11



LOSTWOOD, ND
2011