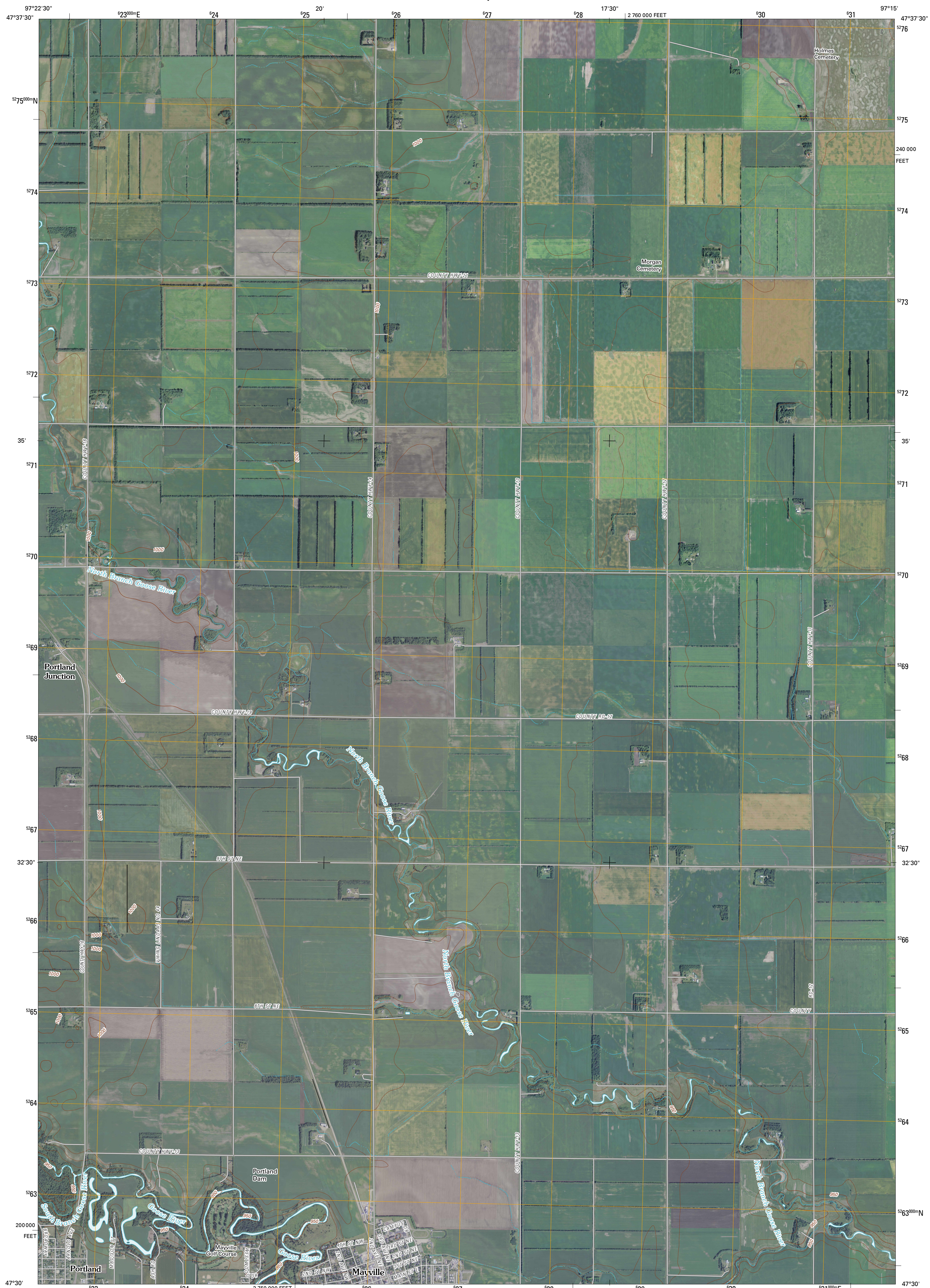




U.S. DEPARTMENT OF THE INTERIOR
U. S. GEOLOGICAL SURVEY



MAYVILLE NORTH QUADRANGLE
NORTH DAKOTA
7.5-MINUTE SERIES



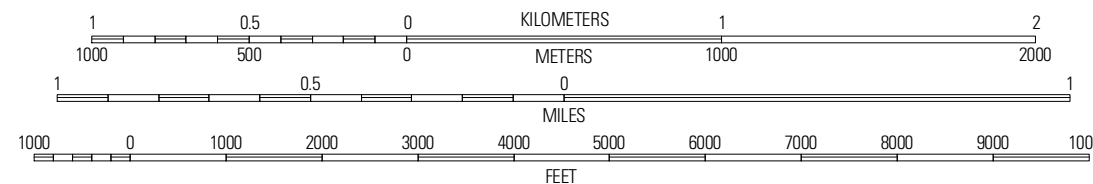
Produced by the United States Geological Survey
North American Datum of 1983 (NAD83)
World Geodetic System of 1984 (WGS84), Projection and
1 000-meter grid: Universal Transverse Mercator, Zone 14T
10 000-foot ticks: North Dakota Coordinate System of 1983
(north zone)

Imagery.....NAIP, August 2009
Roads.....©2006-2010 Tele Atlas
Names.....GNS, 2009
Hydrography.....National Hydrography Dataset, 2009
Contours.....National Elevation Dataset, 2009

UTM GRID AND 2011 MAGNETIC NORTH
DECLINATION AT CENTER OF SHEET

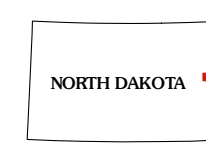
| | |
|-----------------------|--------------------|
| U.S. National Grid | 100,000m Square ID |
| PT | |
| Grid Zone Designation | 14T |

SCALE 1:24 000



CONTOUR INTERVAL 10 FEET
NORTH AMERICAN VERTICAL DATUM OF 1988

This map was produced to conform with version 0.5.10 of the
draft USGS Standards for 7.5-Minute Quadrangle Maps.
A metadata file associated with this product is draft version 0.5.11

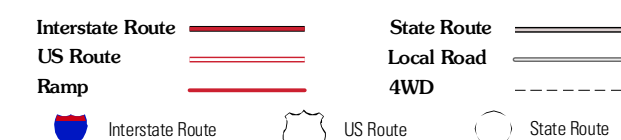


QUADRANGLE LOCATION

| | | |
|-------------|----------------|--------------|
| Hutton | Holmes | Buxton NW |
| Hutton SW | Mayville North | Buxton SW |
| Cakabung NW | Mayville South | Hillsboro NW |

ADJOINING 7.5 QUADRANGLES

ROAD CLASSIFICATION



MAYVILLE NORTH, ND
2011