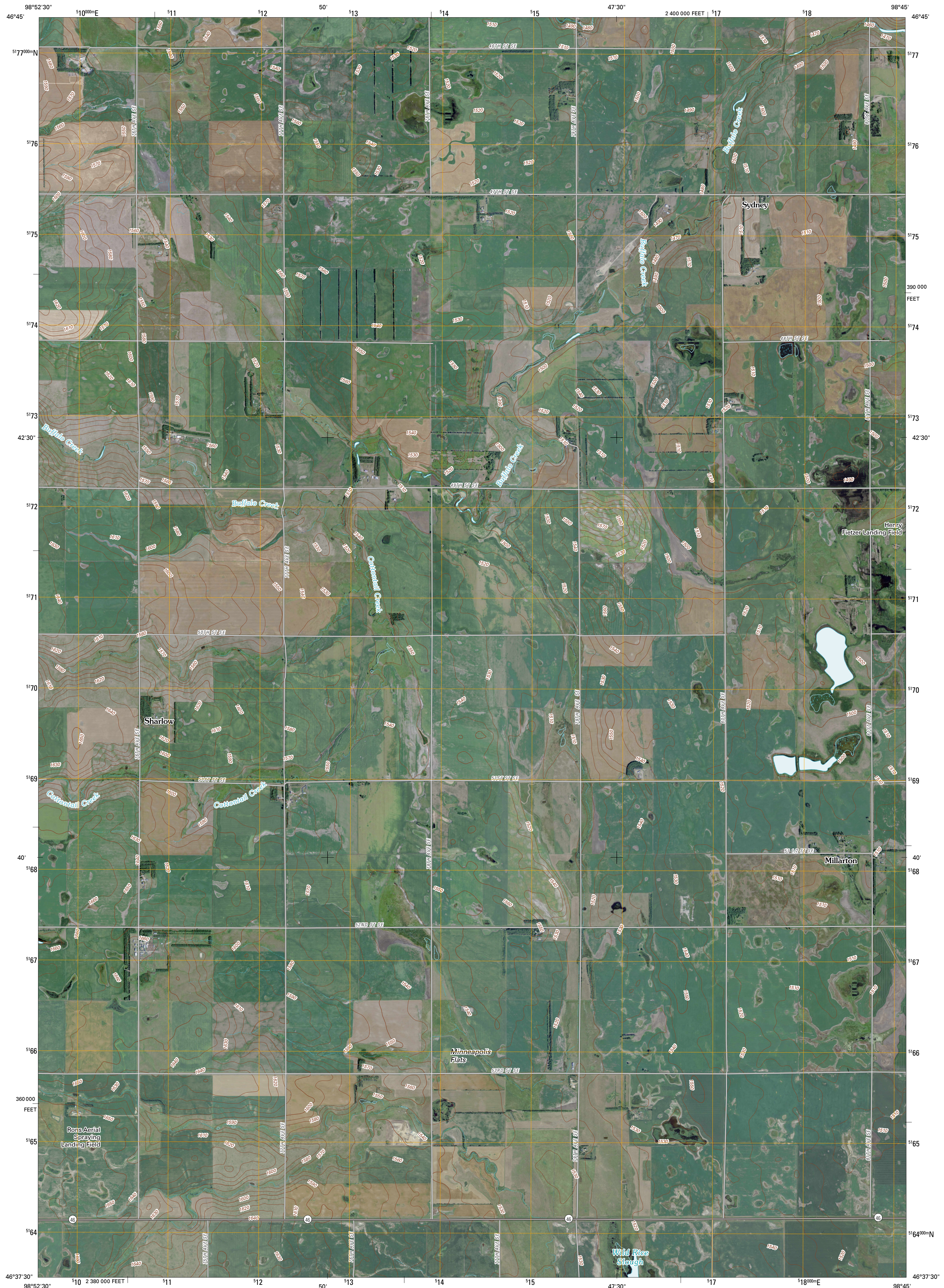




U.S. DEPARTMENT OF THE INTERIOR
U. S. GEOLOGICAL SURVEY

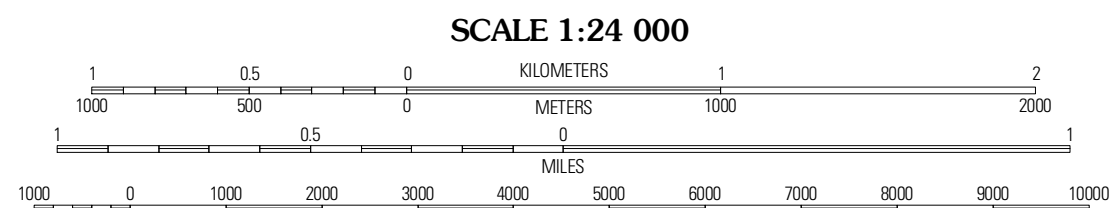
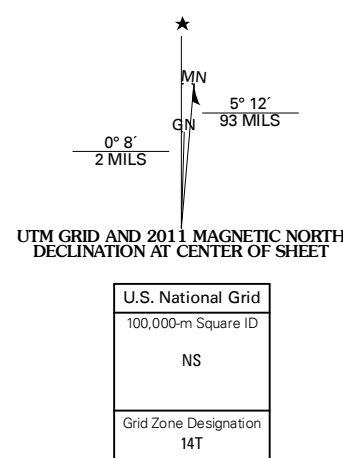


MILLARTON QUADRANGLE
NORTH DAKOTA
7.5-MINUTE SERIES

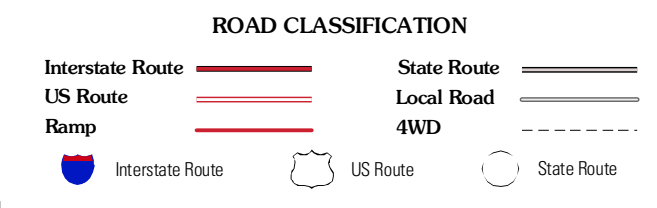
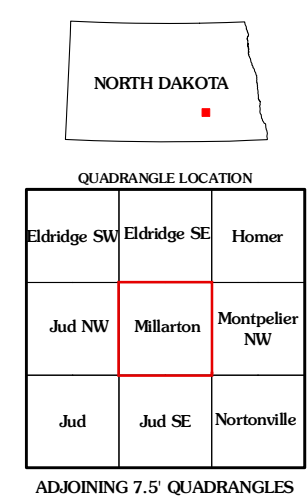


Produced by the United States Geological Survey
North American Datum of 1983 (NAD83)
World Geodetic System of 1984 (WGS84). Projection and
1 000-meter grid. Universal Transverse Mercator, Zone 14T
10 000-foot ticks: North Dakota Coordinate System of 1983
(south zone)

Imagery:.....NAIP, August 2009
Roads:.....©2006-2010 Tele Atlas
Names:.....©2006-2010 Tele Atlas
Hydrography:.....National Hydrography Dataset, 2009
Contours:.....National Elevation Dataset, 2007



CONTOUR INTERVAL 10 FEET
NORTH AMERICAN VERTICAL DATUM OF 1988
This map was produced to conform with version 0.5.10 of the
draft USGS Standards for 7.5-Minute Quadrangle Maps.
A metadata file associated with this product is draft version 0.5.11



MILLARTON, ND
2011