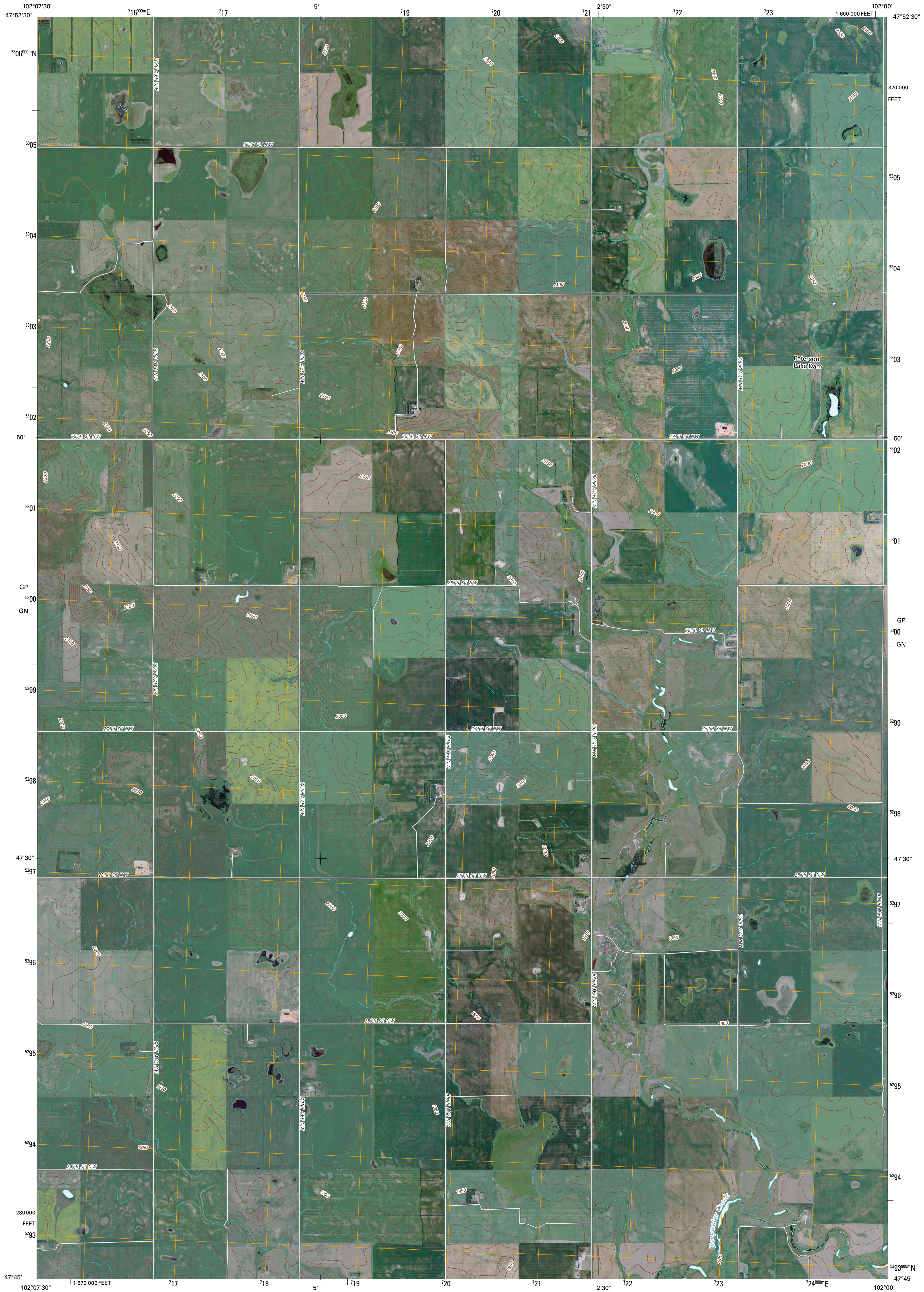




U.S. DEPARTMENT OF THE INTERIOR  
U. S. GEOLOGICAL SURVEY

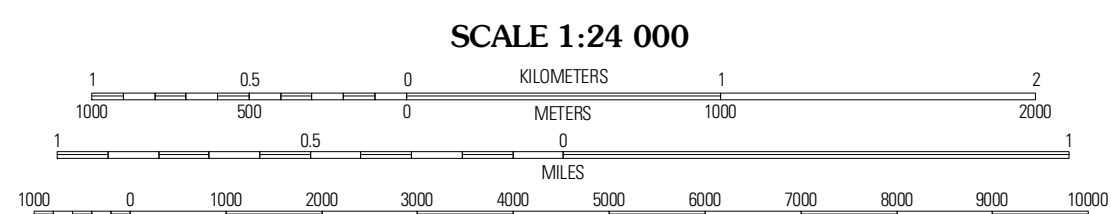
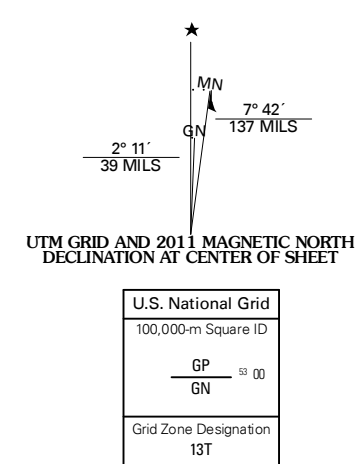


PARSHALL SE QUADRANGLE  
NORTH DAKOTA  
7.5-MINUTE SERIES



Produced by the United States Geological Survey  
North American Datum of 1983 (NAD83)  
World Geodetic System of 1984 (WGS84), Projection and  
1 000-meter grid; Universal Transverse Mercator, Zone 13T  
10 000-foot ticks; North Dakota Coordinate System of 1983  
(north zone)

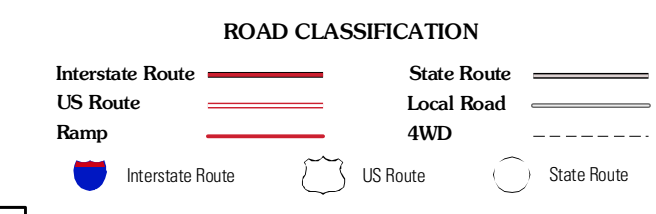
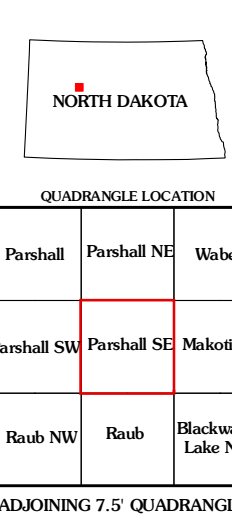
Imagery: NADP, July 2009  
Roads: 2006-2010 Tele Atlas  
Names: GNS, 2009  
Hydrography: National Hydrography Dataset, 2009  
Contours: National Elevation Dataset, 1999



SCALE 1:24 000

CONTOUR INTERVAL 10 FEET  
NORTH AMERICAN VERTICAL DATUM OF 1988

This map was produced to conform with version 0.5.10 of the  
draft USGS Standards for 7.5-Minute Quadrangle Maps.  
A metadata file associated with this product is draft version 0.5.11



QUADRANGLE LOCATION

Parshall	Parshall NE	Wibek
Parshall SW	Parshall SE	Makoti SW
Roub NW	Roub	Blackwater Lake NW

PARSHALL SE, ND  
2011