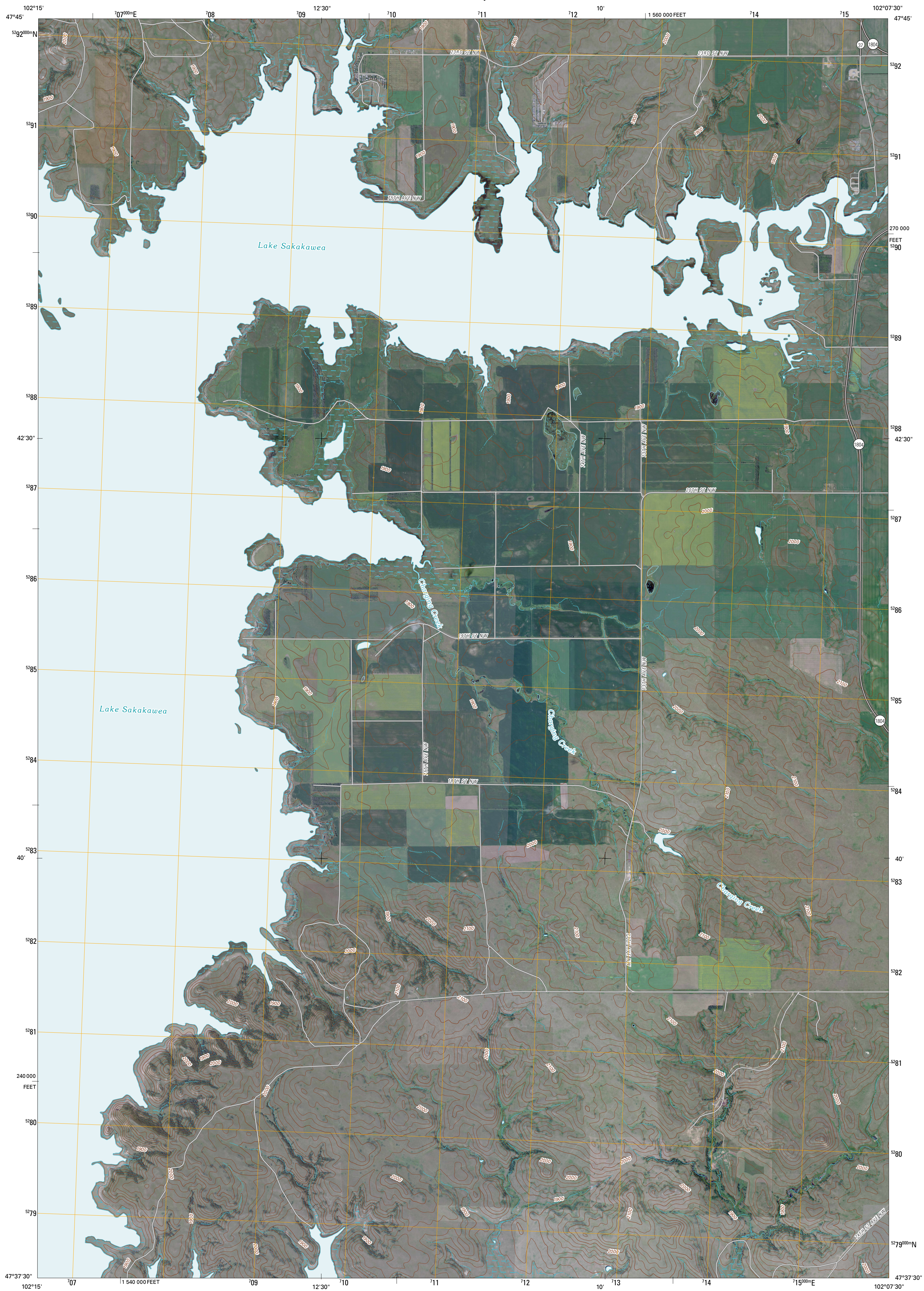




U.S. DEPARTMENT OF THE INTERIOR  
U. S. GEOLOGICAL SURVEY



RAUB NW QUADRANGLE  
NORTH DAKOTA  
7.5-MINUTE SERIES



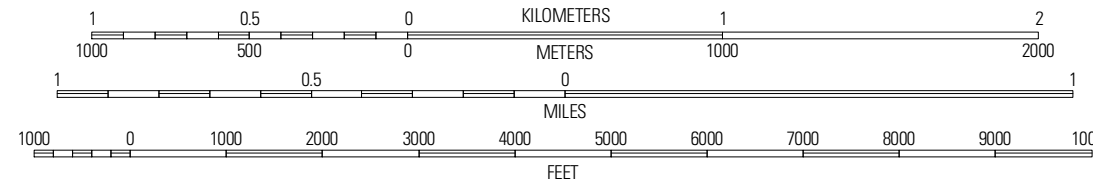
Produced by the United States Geological Survey  
North American Datum of 1983 (NAD83)  
World Geodetic System of 1984 (WGS84). Projection and  
1 000-meter grid; Universal Transverse Mercator, Zone 13T  
10 000-foot ticks; North Dakota Coordinate System of 1983  
(north zone)

Imagery.....NAIP, July 2009  
Roads.....©2006-2010 Tele Atlas  
Names.....GNIS, 2009  
Hydrography.....National Hydrography Dataset, 2009  
Contours.....National Elevation Dataset, 1999

UTM GRID AND 2011 MAGNETIC NORTH  
DECLINATION AT CENTER OF SHEET

U.S. National Grid	700,000m Square ID
GN	
Grid Zone Designation	13T

SCALE 1:24 000



CONTOUR INTERVAL 20 FEET  
NORTH AMERICAN VERTICAL DATUM OF 1988

This map was produced to conform with version 0.5.10 of the  
draft USGS Standards for 7.5-Minute Quadrangle Maps.  
A metadata file associated with this product is draft version 0.5.11

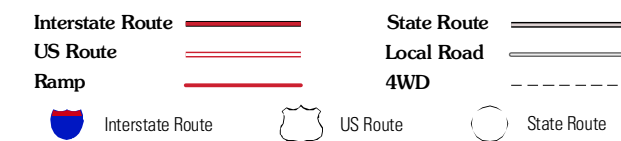


QUADRANGLE LOCATION

New Town SE	Panahall SW	Panahall SE
Sauble Butte	Raub NW	Raub
Hay Flat	Tate Buttes	Raub SE

ADJOINING 7.5' QUADRANGLES

ROAD CLASSIFICATION



RAUB NW, ND  
2011