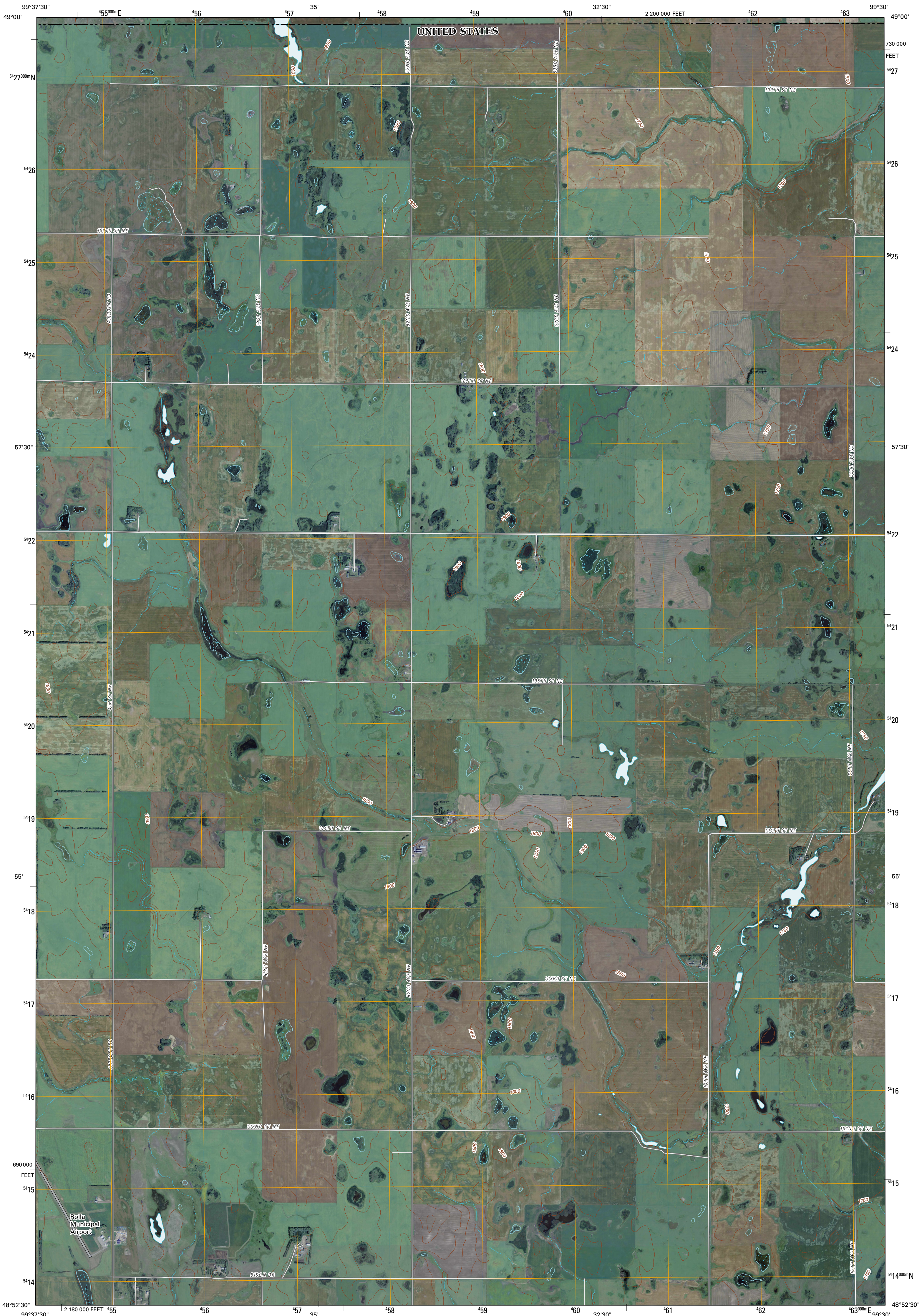




U.S. DEPARTMENT OF THE INTERIOR  
U. S. GEOLOGICAL SURVEY

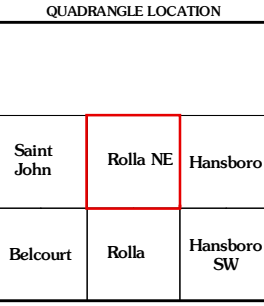
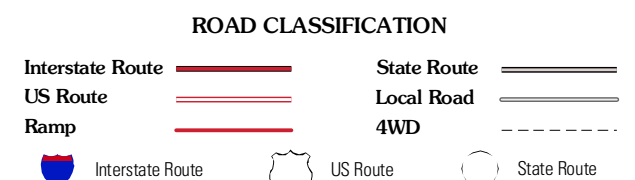
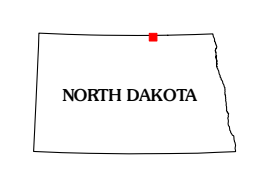
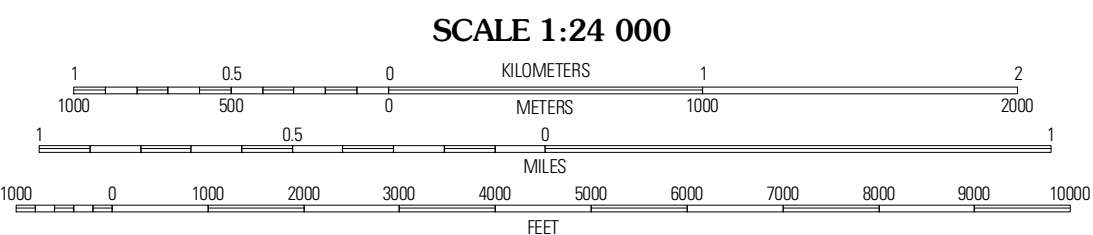
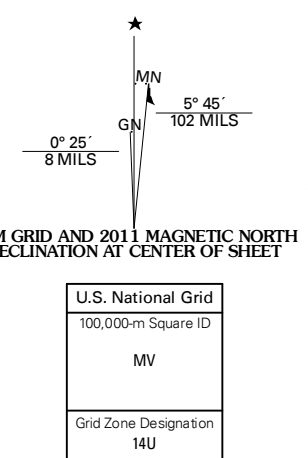


ROLLA NE QUADRANGLE  
NORTH DAKOTA-MANITOBA  
7.5-MINUTE SERIES



Produced by the United States Geological Survey  
North American Datum of 1983 (NAD83)  
World Geodetic System of 1984 (WGS84), Projection and  
1 000-meter grid; Universal Transverse Mercator, Zone 14U  
10 000-foot ticks; North Dakota Coordinate System of 1983  
(north zone)

Image:.....NAIP, August 2009  
Roads:.....©2006-2010 Tele Atlas  
Names:.....GNS, 2009  
Hydrography:.....National Hydrography Dataset, 2009  
Contours:.....National Elevation Dataset, 1999



CONTOUR INTERVAL 10 FEET  
NORTH AMERICAN VERTICAL DATUM OF 1988

This map was produced to conform with version 0.5.10 of the  
draft USGS Standards for 7.5-Minute Quadrangle Maps.  
A metadata file associated with this product is draft version 0.5.11

ROLLA NE, ND-MB  
2011