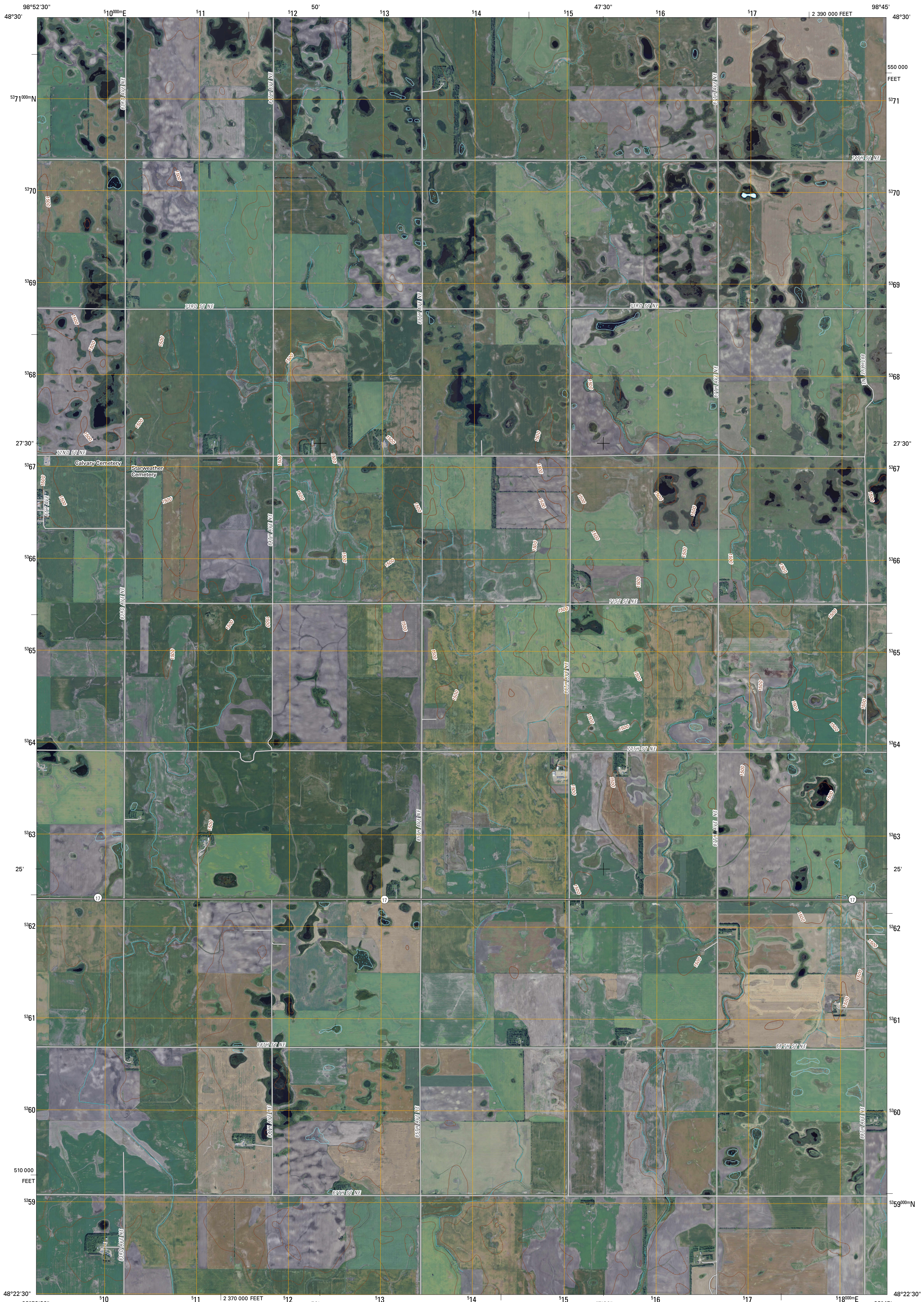




U.S. DEPARTMENT OF THE INTERIOR
U. S. GEOLOGICAL SURVEY



STARKWEATHER NE QUADRANGLE
NORTH DAKOTA
7.5-MINUTE SERIES

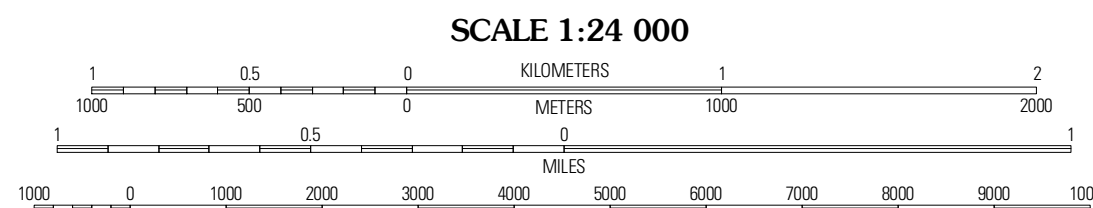


Produced by the United States Geological Survey
North American Datum of 1983 (NAD83)
World Geodetic System of 1984 (WGS84). Projection and
1 000-meter grid; Universal Transverse Mercator, Zone 14U
10 000-foot ticks: North Dakota Coordinate System of 1983
(north zone)

Imagery.....N.A.P., August 2009
Roads.....62006-2010 File: Atlas
Names.....G.N.S., 2009
Hydrography.....National Hydrography Dataset, 2009
Contours.....National Elevation Dataset, 2009

UTM GRID AND 2011 MAGNETIC NORTH
DECLINATION AT CENTER OF SHEET

U.S. National Grid 100 000-m Square ID
NU
Grid Zone Designation 14U

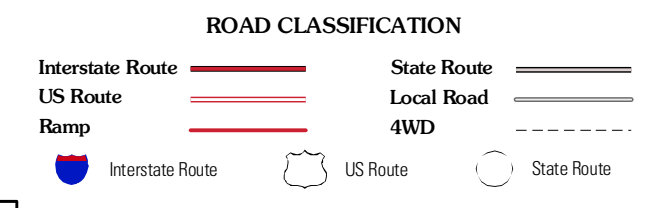


CONTOUR INTERVAL 20 FEET
NORTH AMERICAN VERTICAL DATUM OF 1988
This map was produced to conform with version 0.5.10 of the
draft USGS Standards for 7.5-Minute Quadrangle Maps.
A metadata file associated with this product is draft version 0.5.11



Manich SW	Manich SE	Hamden
Starkweather SW	Starkweather NE	Derrick NW
Webster SW	Starkweather SE	Derrick SW

ADJOINING 7.5 QUADRANGLES



STARKWEATHER NE, ND
2011