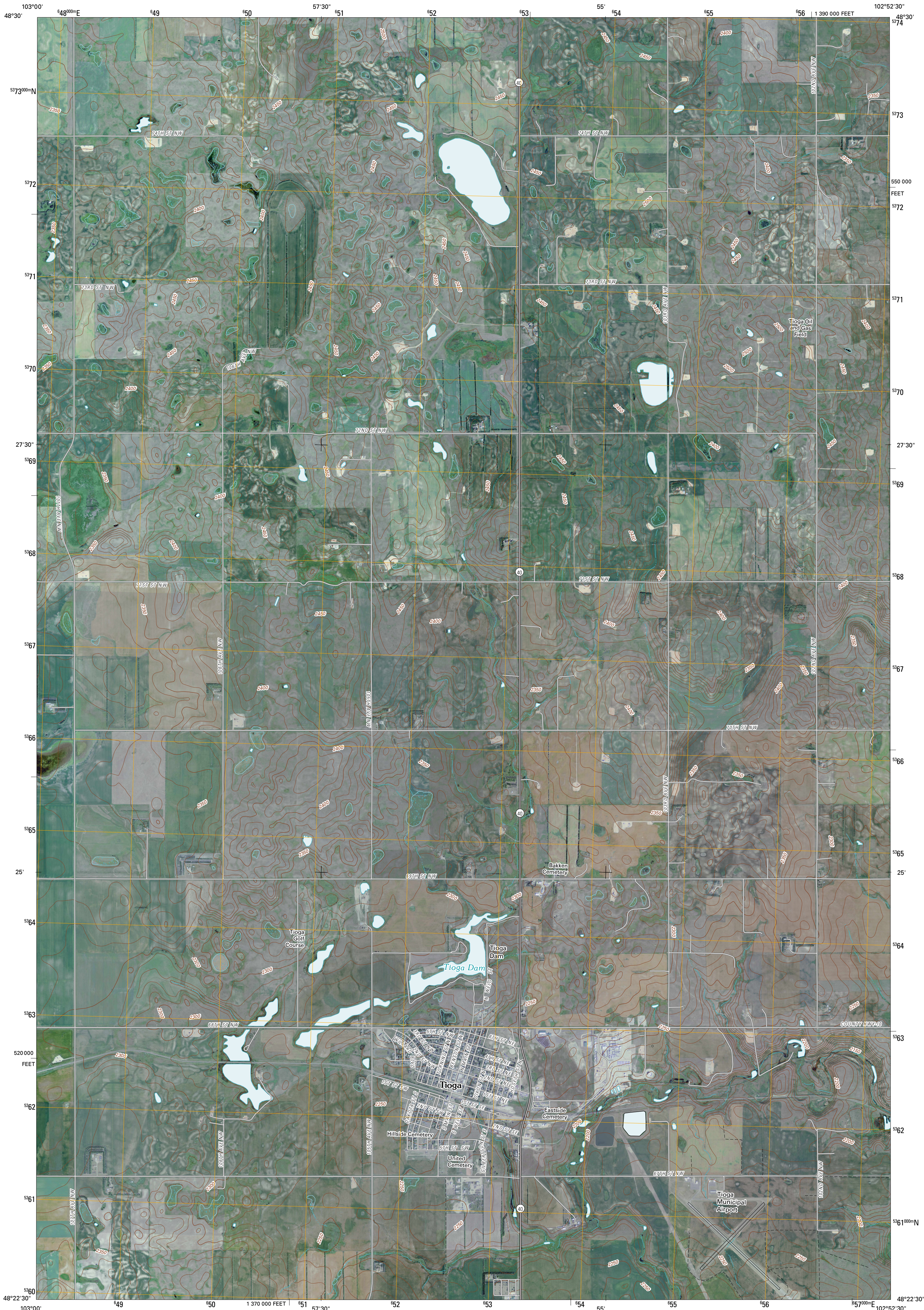




U.S. DEPARTMENT OF THE INTERIOR
U. S. GEOLOGICAL SURVEY



TIOGA QUADRANGLE
NORTH DAKOTA
7.5-MINUTE SERIES

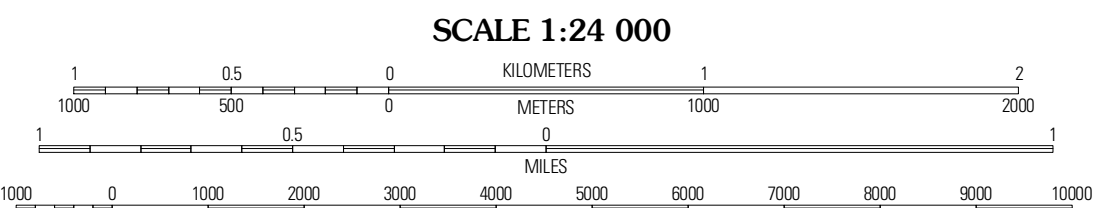


Produced by the United States Geological Survey
North American Datum of 1983 (NAD83)
World Geodetic System of 1984 (WGS84). Projection and
1 000-meter grid. Universal Transverse Mercator, Zone 13U
10 000-foot ticks: North Dakota Coordinate System of 1983
(north zone)

Imagery.....N.A.P., August 2009
Roads.....62006-2010 File Atlas
Names.....GNIS, 2009
Hydrography.....National Hydrography Dataset, 2009
Contours.....National Elevation Dataset, 2008

UTM GRID AND 2011 MAGNETIC NORTH
DECLINATION AT CENTER OF SHEET

U.S. National Grid 100,000-foot Square
FP
Grid Zone Designation 13U



CONTOUR INTERVAL 10 FEET
NORTH AMERICAN VERTICAL DATUM OF 1988

This map was produced to conform with version 0.5.10 of the
draft USGS Standards for 7.5-Minute Quadrangle Maps.
A metadata file associated with this product is draft version 0.5.11



QUADRANGLE LOCATION

Big Meadow	McGregor	Battleview
Temple	Tioga	White Earth
Ray SE	Tioga SW	Tioga SE

ADJOINING 7.5' QUADRANGLES

ROAD CLASSIFICATION

Interstate Route (thick red line)
US Route (red line)
Ramp (red line with blue triangle)
State Route (thin red line)
Local Road (grey line)
4WD (dashed grey line)

TIOGA, ND
2011