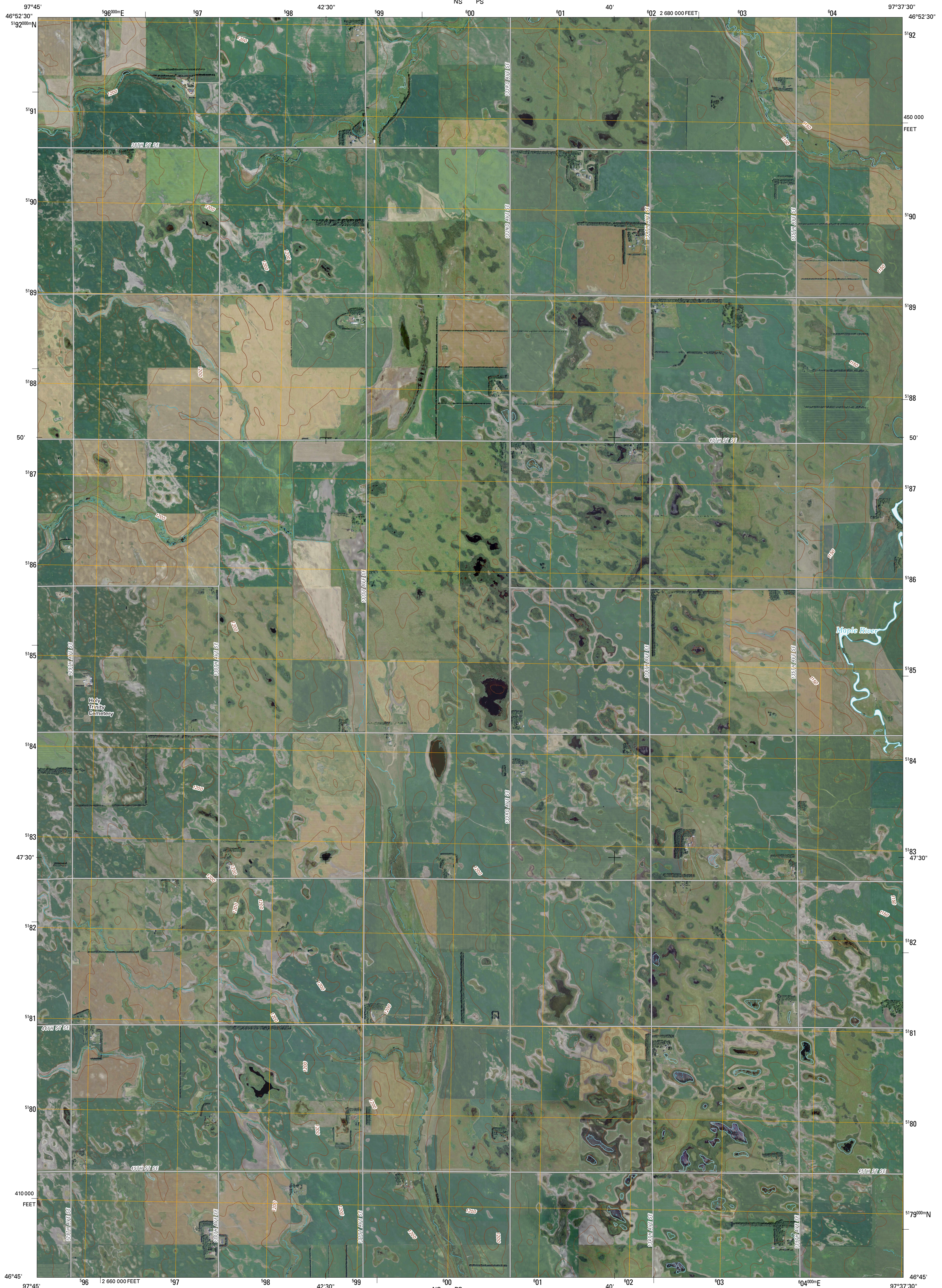




U.S. DEPARTMENT OF THE INTERIOR
U. S. GEOLOGICAL SURVEY

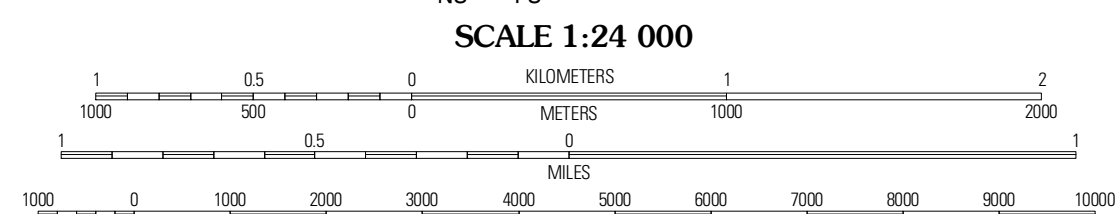
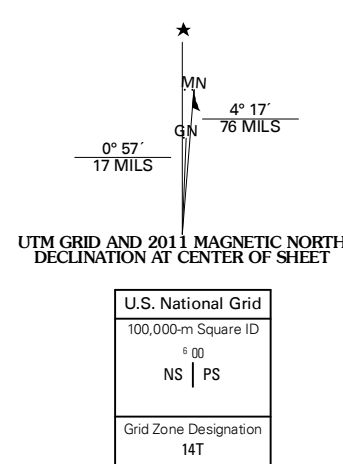


TOWER CITY SW QUADRANGLE
NORTH DAKOTA
7.5-MINUTE SERIES



Produced by the United States Geological Survey
North American Datum of 1983 (NAD83)
World Geodetic System of 1984 (WGS84) Projection and
1 000-meter grid; Universal Transverse Mercator, Zone 14T
10 000-foot ticks; North Dakota Coordinate System of 1983
(south zone)

Imagery: NAIP, August 2009
Roads: 2006-2010 Tele Atlas
Names: GNIS, 2009
Hydrography: National Hydrography Dataset, 2009
Contours: National Elevation Dataset, 2007

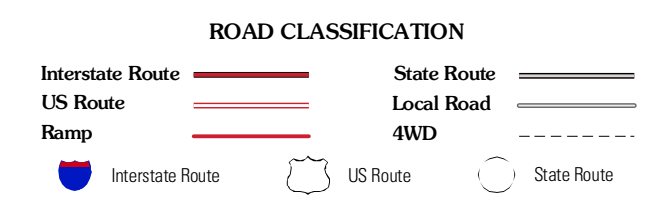


CONTOUR INTERVAL 10 FEET
NORTH AMERICAN VERTICAL DATUM OF 1988
This map was produced to conform with version 0.5.10 of the
draft USGS Standards for 7.5-Minute Quadrangle Maps.
A metadata file associated with this product is draft version 0.5.11



QUADRANGLE LOCATION

Oriska	Tower City	Buffalo
Fingal	Tower City SW	Alice
Nome	Lucca	Enselin North



TOWER CITY SW, ND
2011