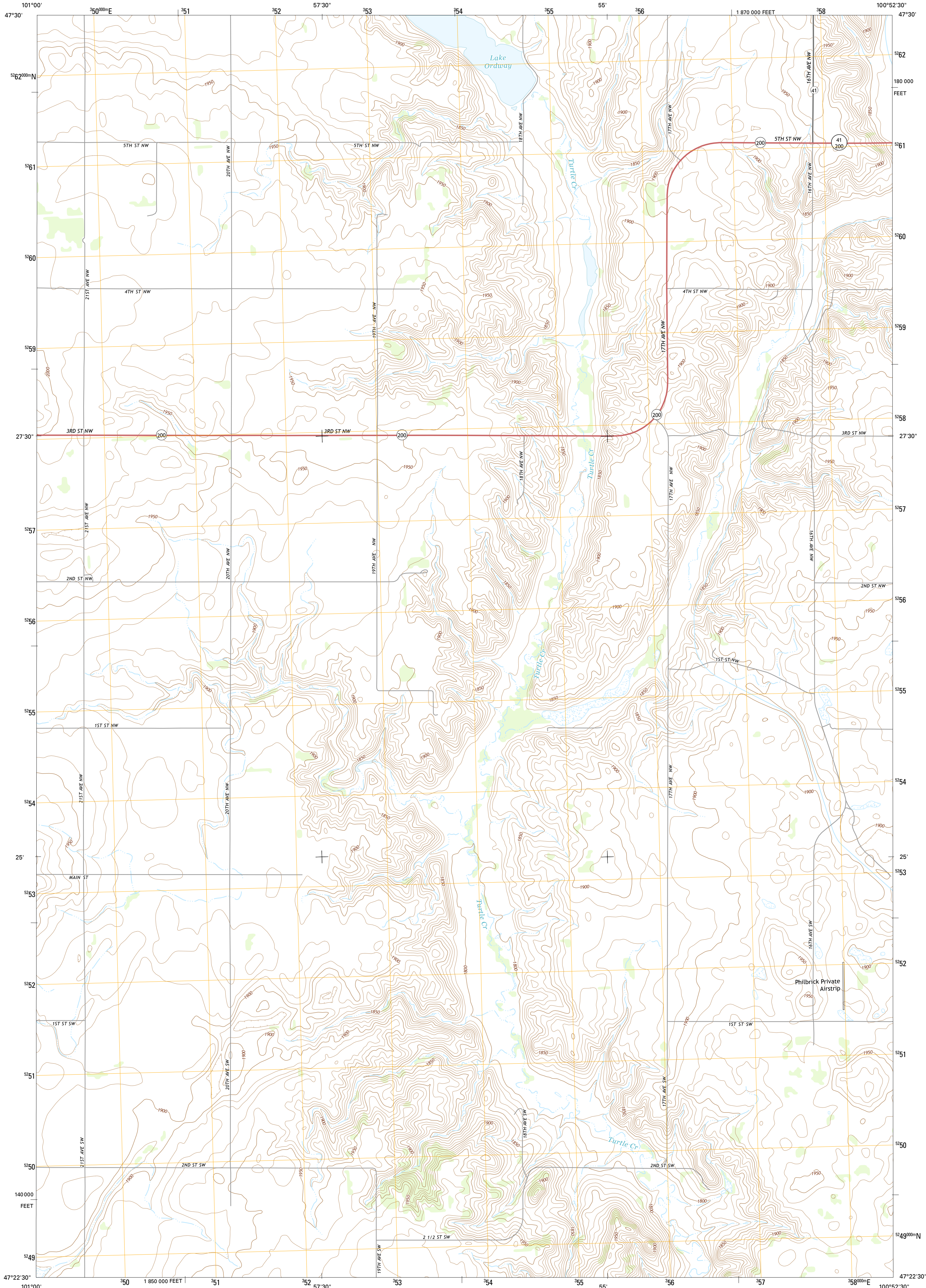




U.S. DEPARTMENT OF THE INTERIOR
U.S. GEOLOGICAL SURVEY



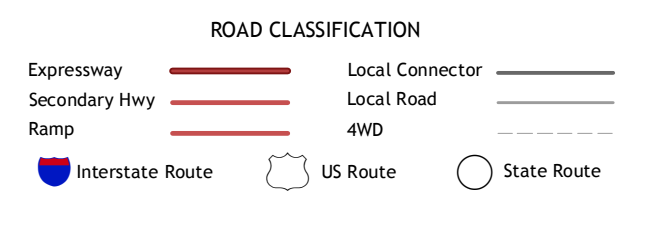
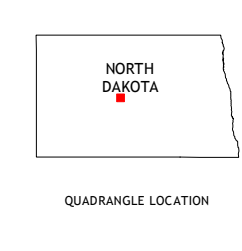
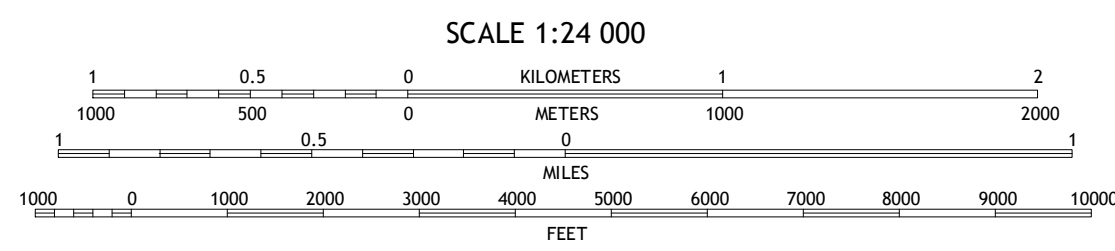
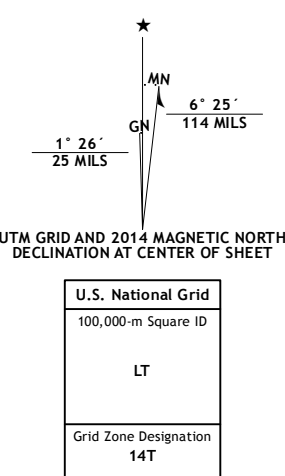
TURTLE CREEK NW QUADRANGLE
NORTH DAKOTA-MCLEAN CO.
7.5-MINUTE SERIES



Produced by the United States Geological Survey
North American Datum of 1983 (NAD83)
World Geodetic System of 1984 (WGS84), Projection and
1 000-meter grid: Universal Transverse Mercator, Zone 14T
10 000-foot ticks: North Dakota Coordinate System of 1983
(north zone)

This map is not a legal document. Boundaries may be
generalized for this map scale. Private lands within government
reservations may not be shown. Obtain permission before
entering private lands.

Imagery.....NAIP, June 2012 - July 2012
Roads.....HERE, ©2013
Names.....GNIS, 2013
Hydrography.....National Hydrography Dataset, 2012
Contours.....National Elevation Dataset, 2007
Boundaries.....Multiple sources; see metadata file 1972 - 2013



1	2	3
4	5	6
7	8	

ADJOINING QUADRANGLES

1 Lake Nettie
2 Turtle Lake
3 Peterson Lake
4 Washburn NE
5 Turtle Creek NE
6 Washburn
7 Turtle Creek SW
8 Turtle Creek SE

TURTLE CREEK NW, ND
2014

