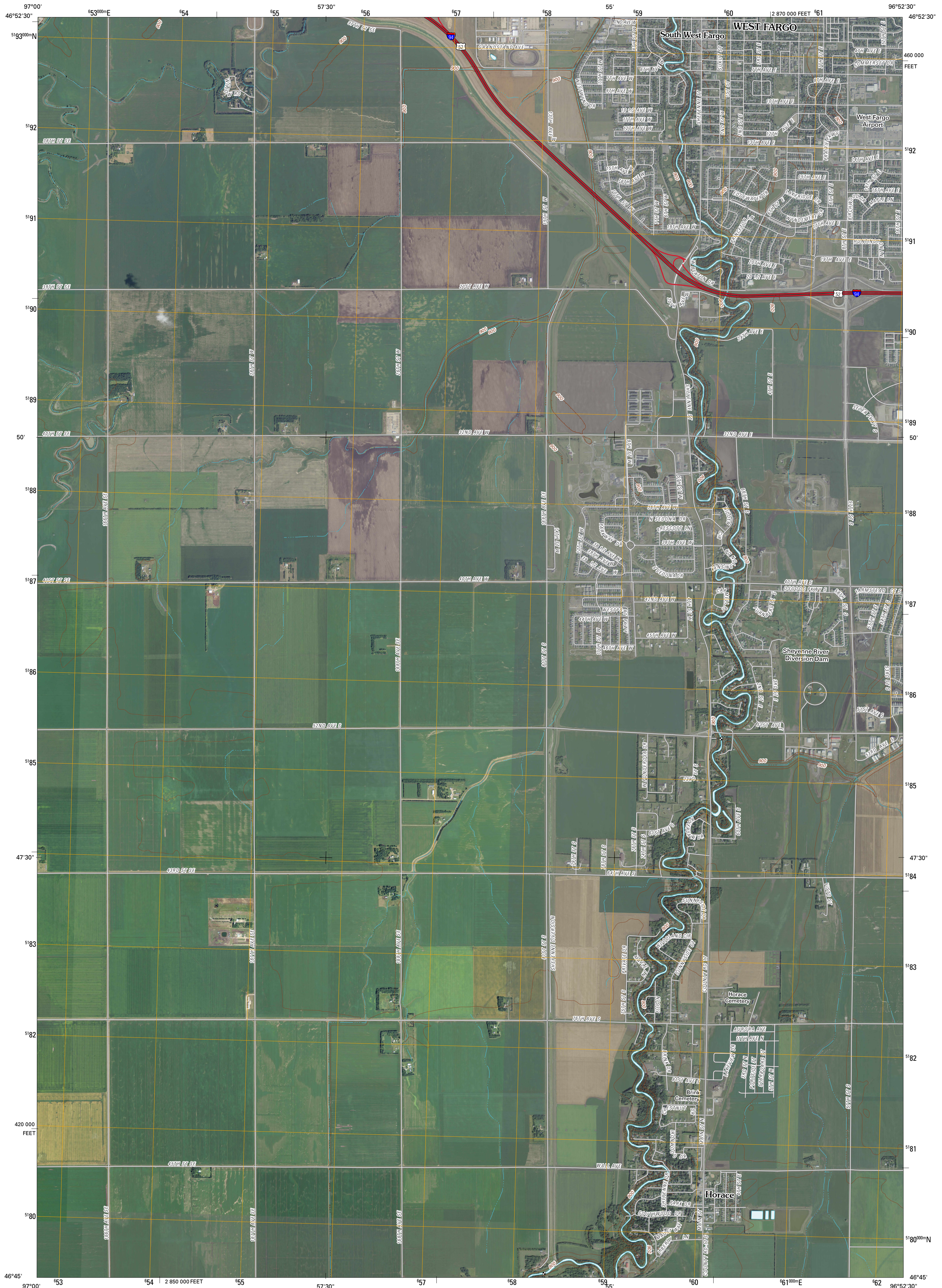




U.S. DEPARTMENT OF THE INTERIOR  
U. S. GEOLOGICAL SURVEY



WEST FARGO SOUTH QUADRANGLE  
NORTH DAKOTA  
7.5-MINUTE SERIES

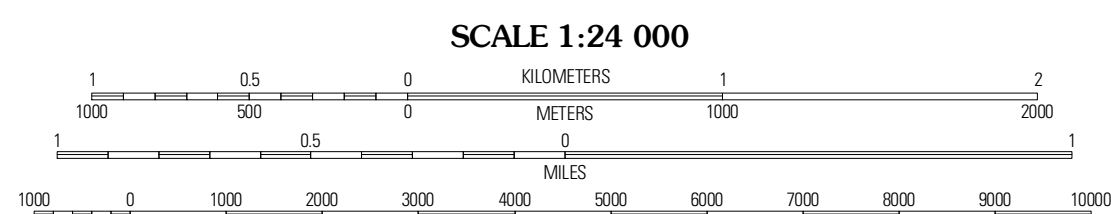


Produced by the United States Geological Survey  
North American Datum of 1983 (NAD83)  
World Geodetic System of 1984 (WGS84) Projection and  
1 000-meter grid; Universal Transverse Mercator, Zone 14T  
10 000-foot ticks; North Dakota Coordinate System of 1983  
(south zone)

Imagery: NAIP, September 2009  
Roads: 62006-2010 Tele Atlas  
Names: GNIS, 2009  
Hydrography: National Hydrography Dataset, 2009  
Contours: National Elevation Dataset, 1999

UTM GRID AND 2011 MAGNETIC NORTH DECLINATION AT CENTER OF SHEET

U.S. National Grid  
100,000m Square ID  
PS  
Grid Zone Designation  
14T



CONTOUR INTERVAL 10 FEET  
NORTH AMERICAN VERTICAL DATUM OF 1988  
This map was produced to conform with version 0.5.10 of the  
draft USGS Standards for 7.5-Minute Quadrangle Maps.  
A metadata file associated with this product is draft version 0.5.11

ROAD CLASSIFICATION

Interstate Route (thick red line)  
US Route (red line)  
Ramp (red line with blue arrow)  
State Route (grey line)  
Local Road (grey line with cross-ticks)  
4WD (dashed grey line)

QUADRANGLE LOCATION

Mapleton	West Fargo North	Fargo North
Casselton SE	West Fargo South	Fargo South
Kinred	Norman	Hickson

ADJOINING 7.5 QUADRANGLES

WEST FARGO SOUTH, ND  
2011