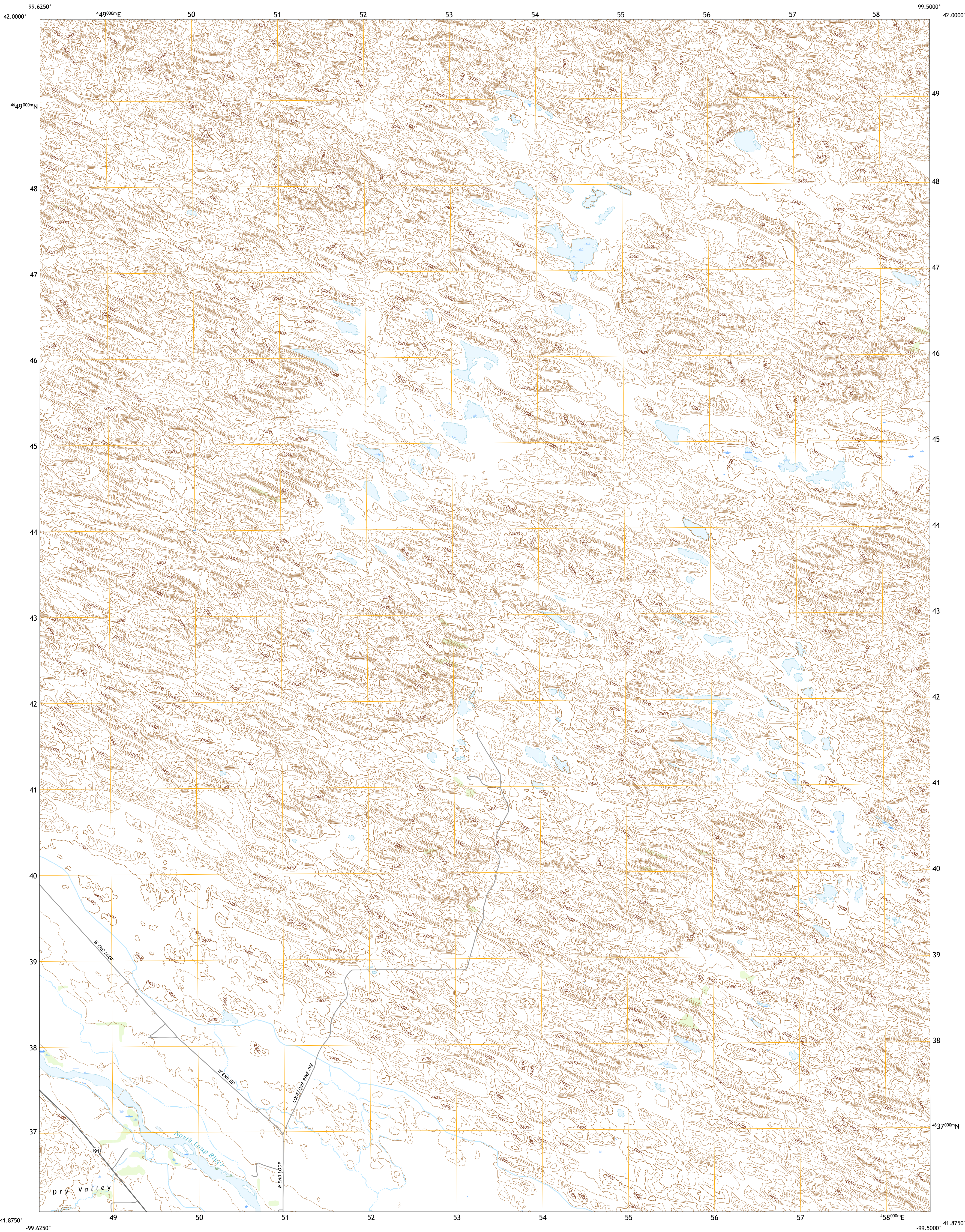




U.S. DEPARTMENT OF THE INTERIOR
U.S. GEOLOGICAL SURVEY

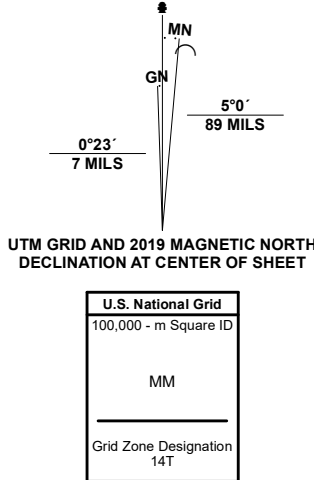


ALMERIA NE QUADRANGLE
NEBRASKA - LOUP COUNTY
7.5-MINUTE SERIES



Produced by the United States Geological Survey

North American Datum of 1983 (NAD83)
World Geodetic System of 1984 (WGS84) Projection and
1 000-meter grid/Universal Transverse Mercator, Zone 14T
This map is not a legal document. Boundaries may be
generalized for this map scale. Private lands within government
reservations may not be shown. Obtain permission before
entering private lands.
Imagery.....NAIP, August 2020 - August 2020
Roads.....U.S. Census Bureau, 2015
Names.....GNIS, 1999 - 2017
Hydrography.....National Hydrography Dataset, 2006 - 2019
Contours.....National Elevation Dataset, 2018
Boundaries.....Multiple sources: see metadata file, 2019 - 2021
Public Land Survey System.....BLM, 2020
Wetlands.....FWS National Wetlands Inventory Not Available



QUADRANGLE LOCATION

1	2	3
4	5	6
7	8	9

- 1 Bolling Spring
2 Shovel Dot Ranch
3 Stonehouse Ranch SW
4 Almeria NW
5 Taylor NW
6 Almeria SW
7 Almeria
8 Taylor

ROAD CLASSIFICATION		
Expressway	Local Connector	
Secondary Hwy	Local Road	
Ramp	4WD	
Interstate Route	US Route	State Route

ALMERIA NE, NE

2021

