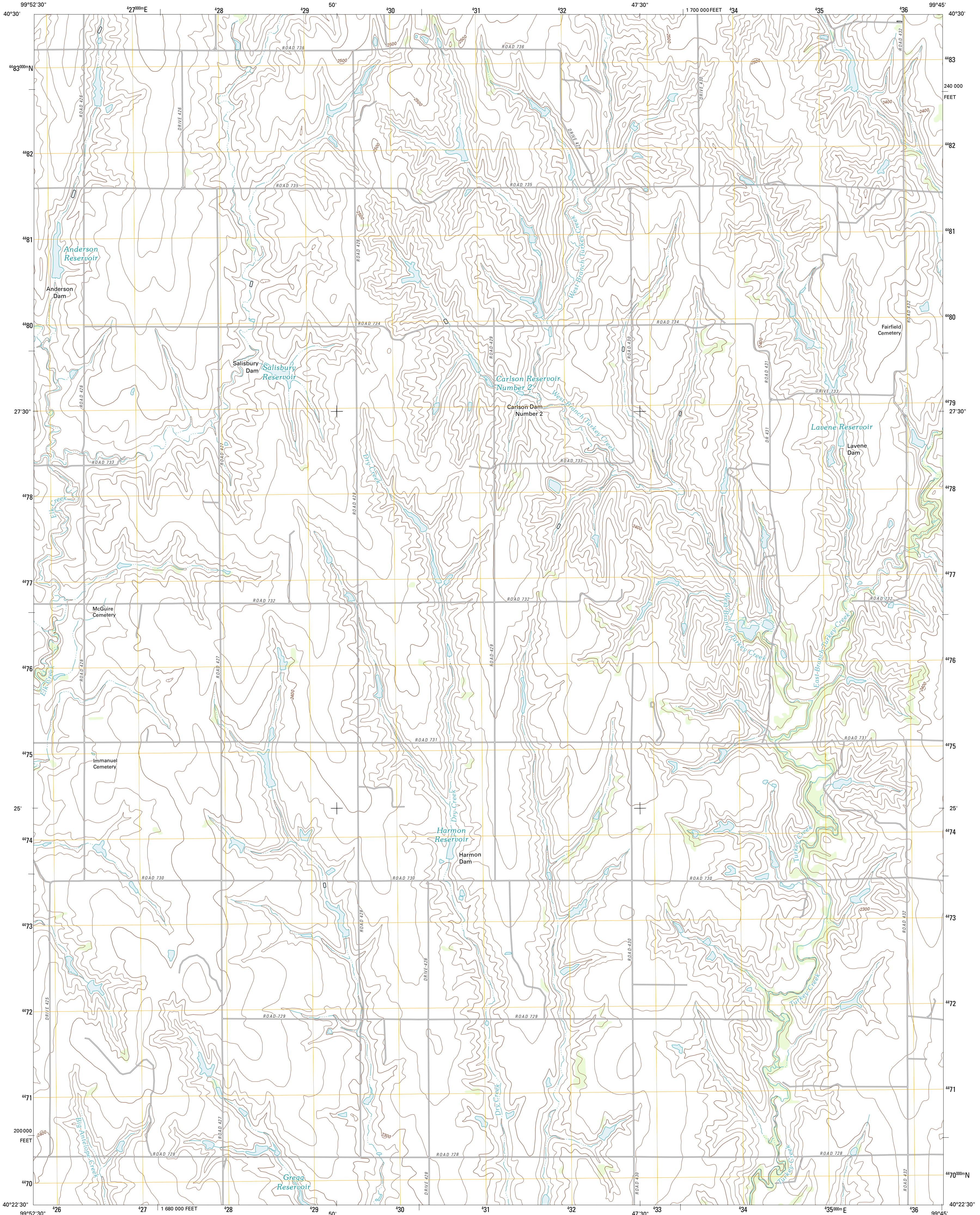




U.S. DEPARTMENT OF THE INTERIOR
U. S. GEOLOGICAL SURVEY

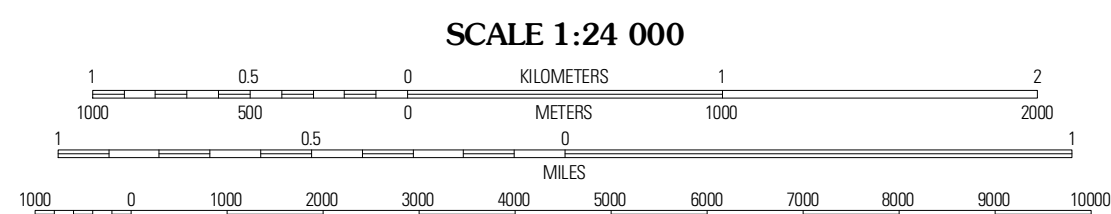
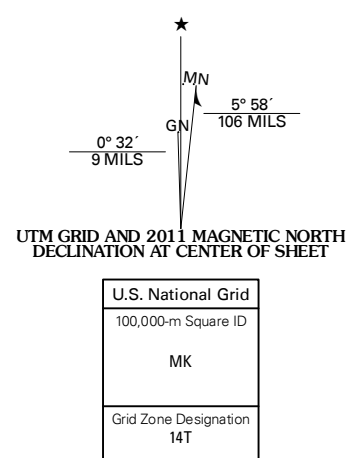


ARAPAHOE NE QUADRANGLE
NEBRASKA-GOSPER CO.
7.5-MINUTE SERIES



Produced by the United States Geological Survey
North American Datum of 1983 (NAD83)
World Geodetic System of 1984 (WGS84). Projection and
1 000-meter grid: Universal Transverse Mercator, Zone 14T
10 000-foot ticks: Nebraska Coordinate System of 1983

Imagery: N.A.I.P., July 2010
Roads: ©2006-2011 TomTom
Names: ©2006-2011 GNS, 2011
Hydrography: National Hydrography Dataset, 2009
Contours: National Elevation Dataset, 2001
Boundaries: Census, IBWC, IBC, USGS, 1972 - 2010

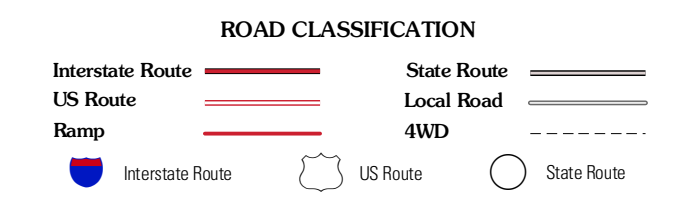


CONTOUR INTERVAL 20 FEET
NORTH AMERICAN VERTICAL DATUM OF 1988
This map was produced to conform with the
National Geospatial Program US Topo Product Standard, 2011.
A metadata file associated with this product is draft version 0.6.1



QUADRANGLE LOCATION

Elwood SW	Elwood	Bertand
Arapahoe NW	Arapahoe NE	Oxford NW
Arapahoe	Elton	Oxford



ARAPAHOE NE, NE
2011

ADJOINING 7.5 QUADRANGLES