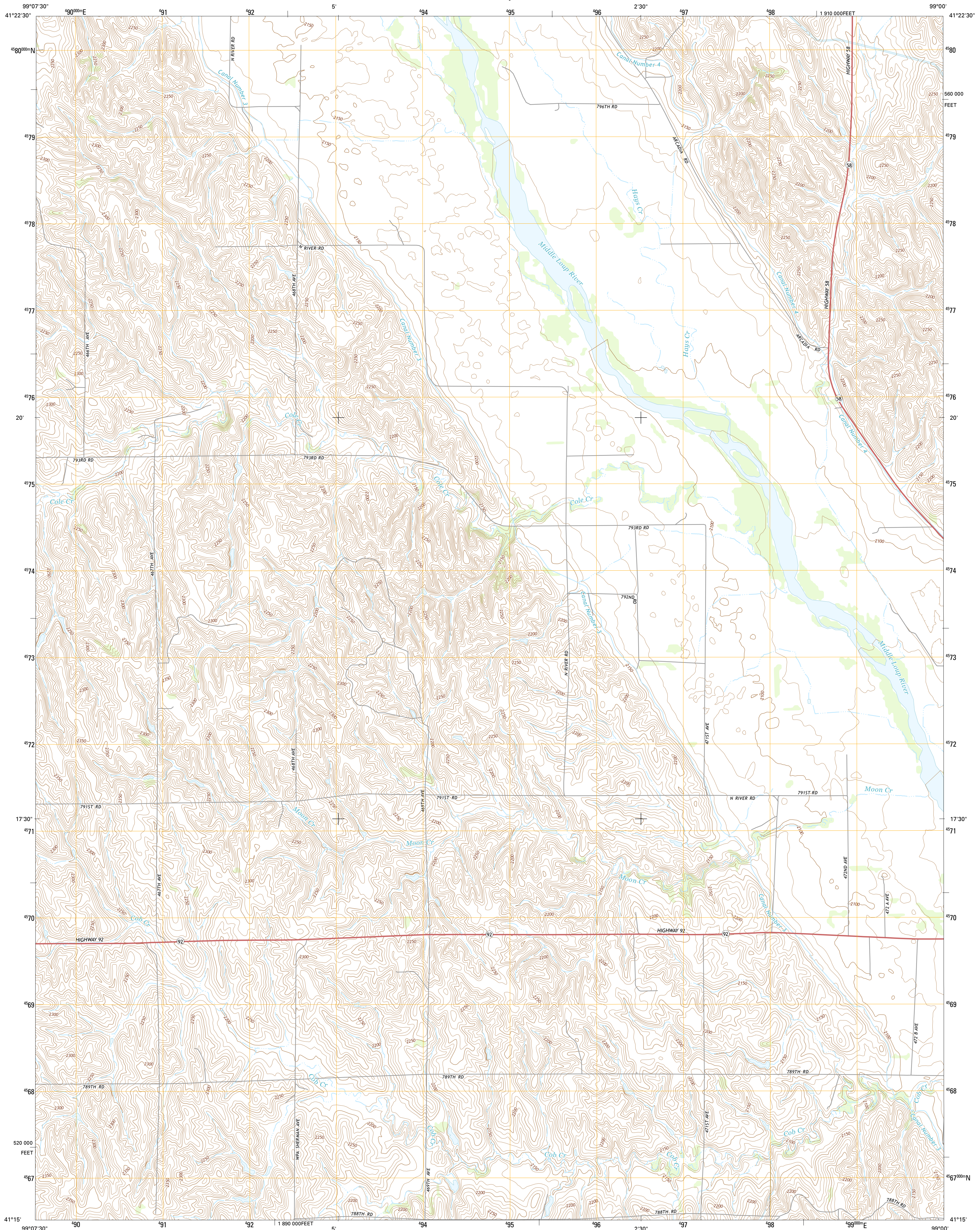




U.S. DEPARTMENT OF THE INTERIOR
U.S. GEOLOGICAL SURVEY



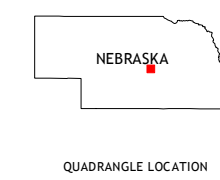
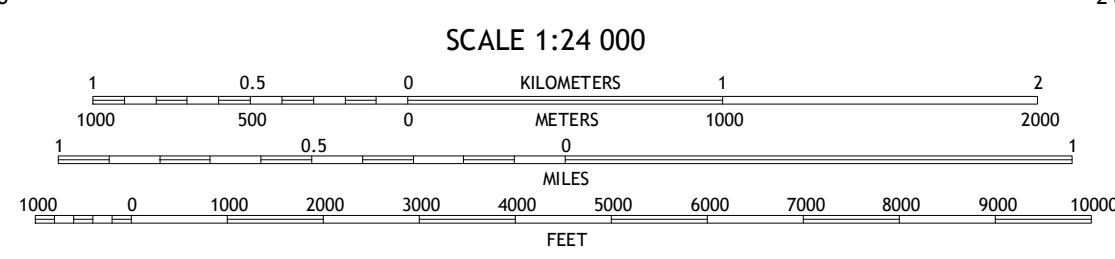
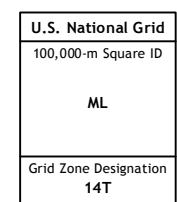
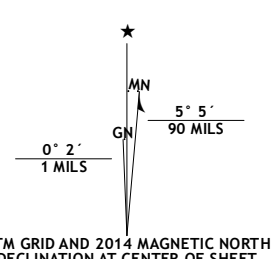
ARCADIA SE QUADRANGLE
NEBRASKA-SHERMAN CO.
7.5-MINUTE SERIES



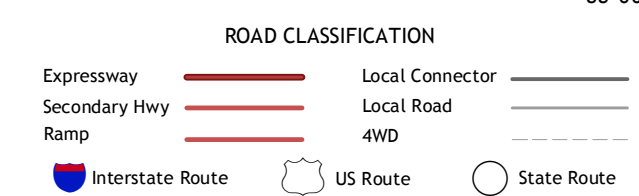
Produced by the United States Geological Survey
North American Datum of 1983 (NAD83)
World Geodetic System of 1984 (WGS84). Projection and
1 000-meter grid: Universal Transverse Mercator, Zone 14T
10 000-foot ticks: Nebraska Coordinate System of 1983

This map is not a legal document. Boundaries may be
generalized for this map scale. Private lands within government
reservations may not be shown. Obtain permission before
entering private lands.

Imagery.....NAIP, June 2012
Roads.....HERE, ©2013
Names.....GNS, 2013
Hydrography.....National Hydrography Dataset, 2012
Contours.....National Elevation Dataset, 2002
Boundaries.....Multiple sources; see metadata file 1972 - 2014



QUADRANGLE LOCATION



1	2	3
4	5	6
7	8	

1 Arcadia West
2 Arcadia East
3 Loup City NW
4 Arcadia SW
5 Loup City
6 Litchfield
7 Litchfield NE
8 Ravenna NW

ARCADIA SE, NE
2014

