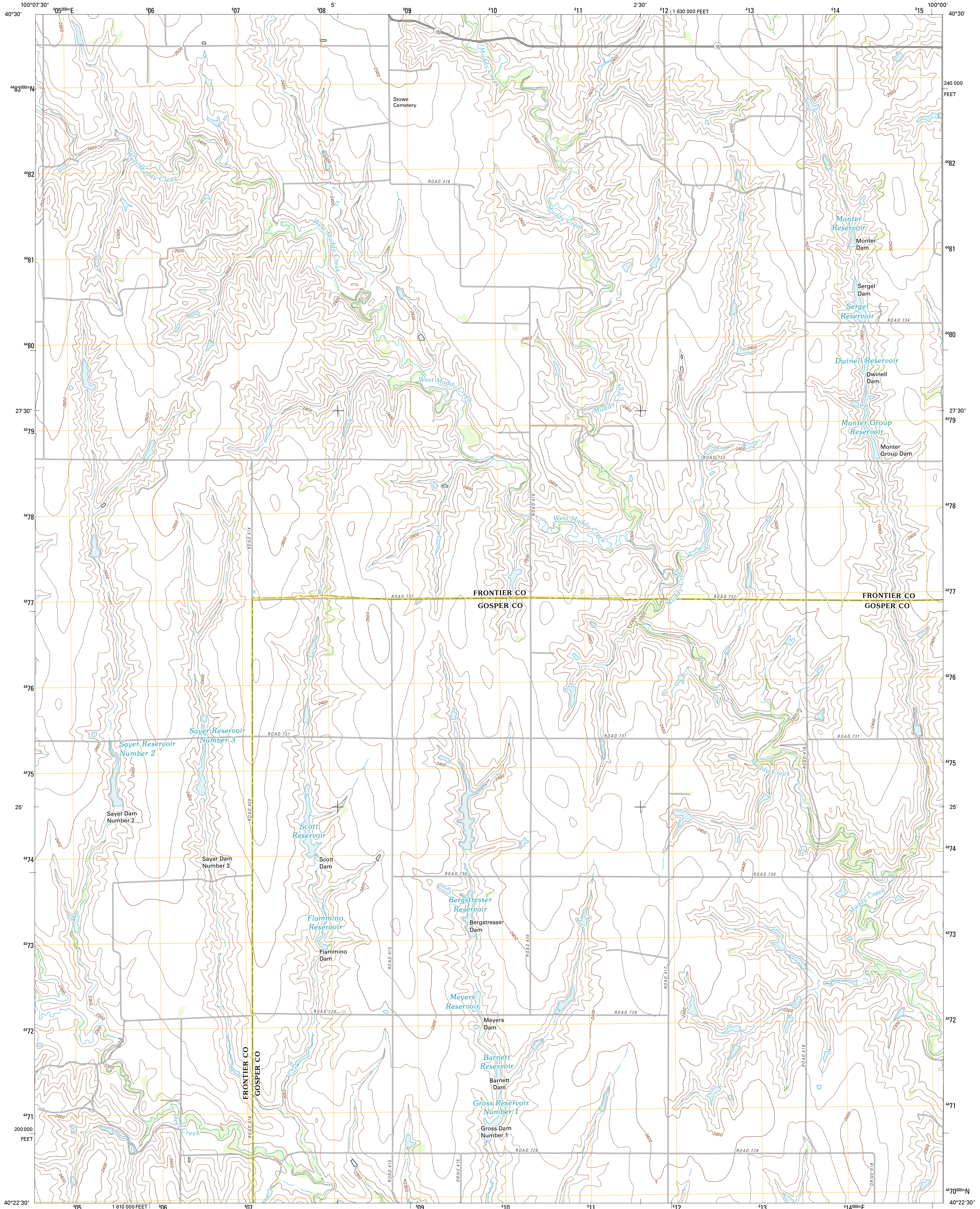




U.S. DEPARTMENT OF THE INTERIOR
U. S. GEOLOGICAL SURVEY



CAMBRIDGE NE QUADRANGLE
NEBRASKA
7.5-MINUTE SERIES

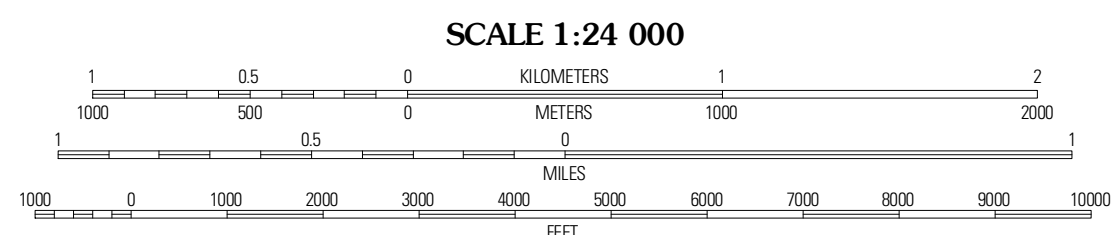


Produced by the United States Geological Survey
North American Datum of 1983 (NAD83)
World Geodetic System of 1984 (WGS84). Projection and
1 000-meter grid: Universal Transverse Mercator, Zone 14T
10 000-foot ticks: Nebraska Coordinate System of 1983

Imagery:.....NAIP, July 2010
Roads:.....©2006-2011 TomTom
Names:.....GNIS, 2011
Hydrography:.....National Hydrography Dataset, 2009
Contours:.....National Elevation Dataset, 2001
Boundaries:.....Census, IBWC, IBC, USGS, 1972 - 2010

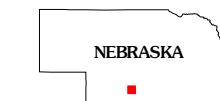
UTM GRID AND 2011 MAGNETIC NORTH
DECLINATION AT CENTER OF SHEET

U.S. National Grid
100,000-m Square ID
MK
Grid Zone Designation
14T



CONTOUR INTERVAL 20 FEET
NORTH AMERICAN VERTICAL DATUM OF 1988

This map was produced to conform with the
National Geospatial Program US Topo Product Standard, 2011.
A metadata file associated with this product is draft version 0.6.1



NEBRASKA

QUADRANGLE LOCATION

East SW	East SE	East SW
Medicine Creek Dam	Cambridge NE	Arapahoe NW
Cambridge	Hollbrook	Arapahoe

ROAD CLASSIFICATION

- Interstate Route
- US Route
- Ramp
- State Route
- Local Road
- 4WD

CAMBRIDGE NE, NE
2011

ADJOINING 7.5 QUADRANGLES