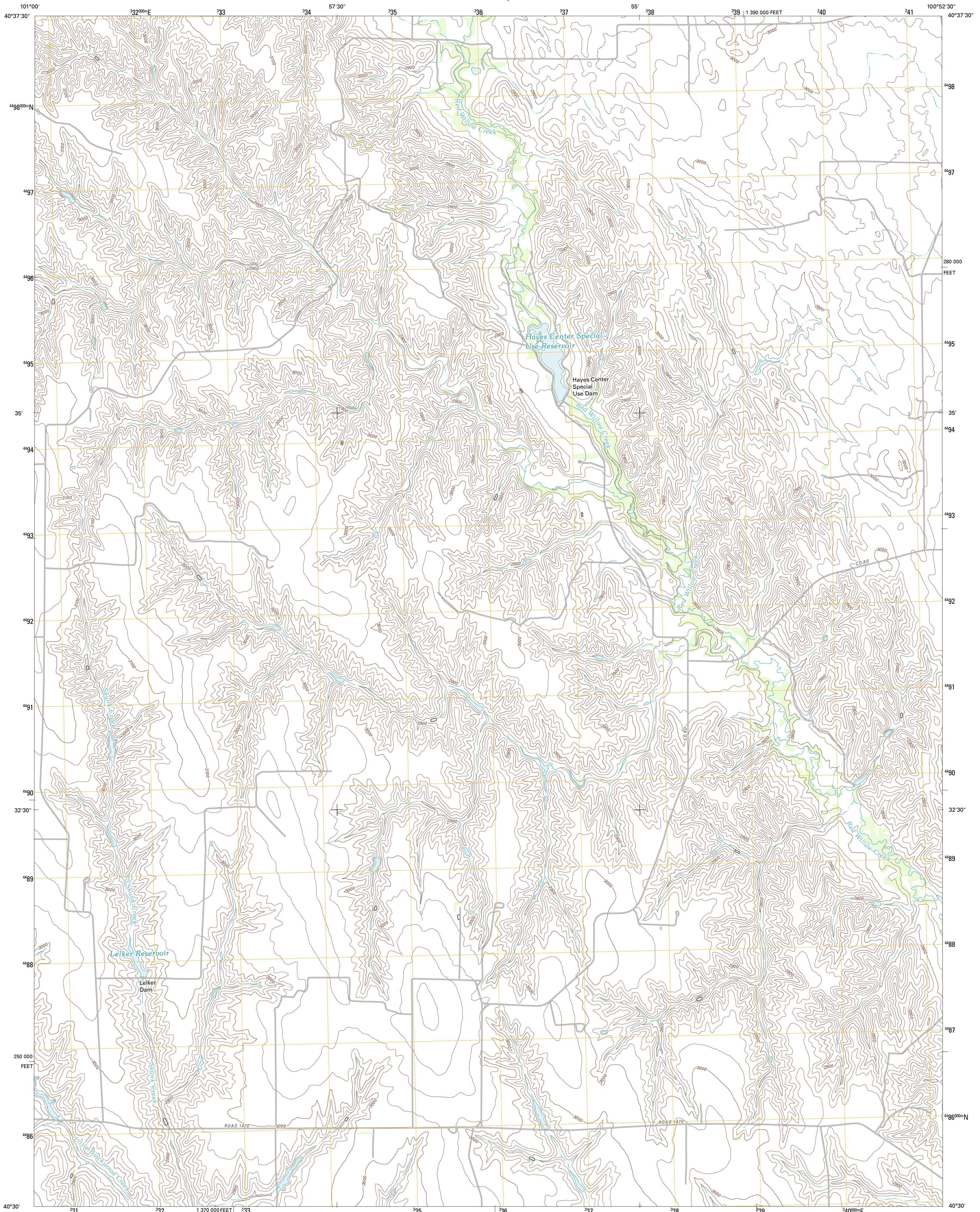




U.S. DEPARTMENT OF THE INTERIOR  
U. S. GEOLOGICAL SURVEY

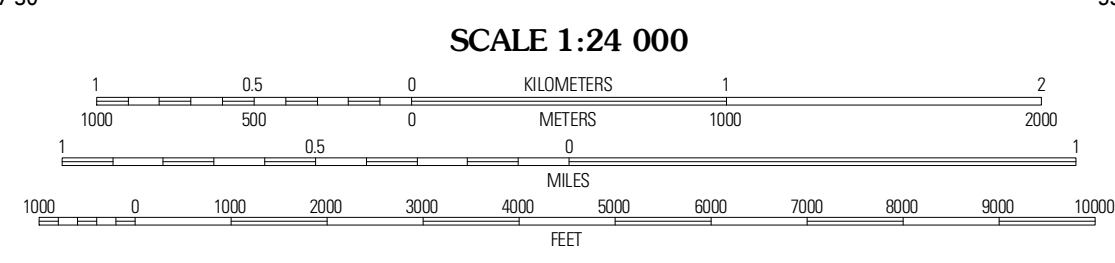
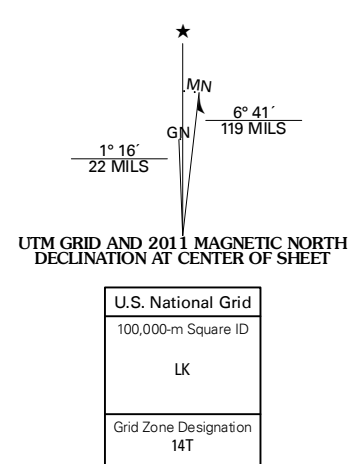


CAMP HAYES LAKE QUADRANGLE  
NEBRASKA-HAYES CO.  
7.5-MINUTE SERIES



Produced by the United States Geological Survey  
North American Datum of 1983 (NAD83)  
World Geodetic System of 1984 (WGS84) Projection and  
1 000-meter grid, Universal Transverse Mercator, Zone 14T  
10 000-foot ticks: Nebraska Coordinate System of 1983

Imagery.....N.A.P., June 2010  
Roads.....©2006-2011, TomTom  
Names.....G.N.S., 2011  
Hydrography.....National Hydrography Dataset, 2009  
Contours.....National Elevation Dataset, 2001  
Boundaries.....Census, IBWC, IBC, USGS, 1972 - 2010



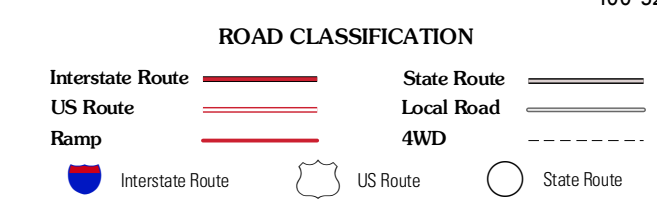
CONTOUR INTERVAL 20 FEET  
NORTH AMERICAN VERTICAL DATUM OF 1988  
This map was produced to conform with the  
National Geospatial Program US Topo Product Standard, 2011.  
A metadata file associated with this product is draft version 0.6.1



QUADRANGLE LOCATION

Sutlers Canyon West	Sutlers Canyon East	Camp Hayes Lake NE
Hayes Center	Camp Hayes Lake	Camp Hayes Lake SE
Pulsede NE	Burger Canyon West	Burger Canyon East

ADJOINING 7.5' QUADRANGLES



CAMP HAYES LAKE, NE  
2011