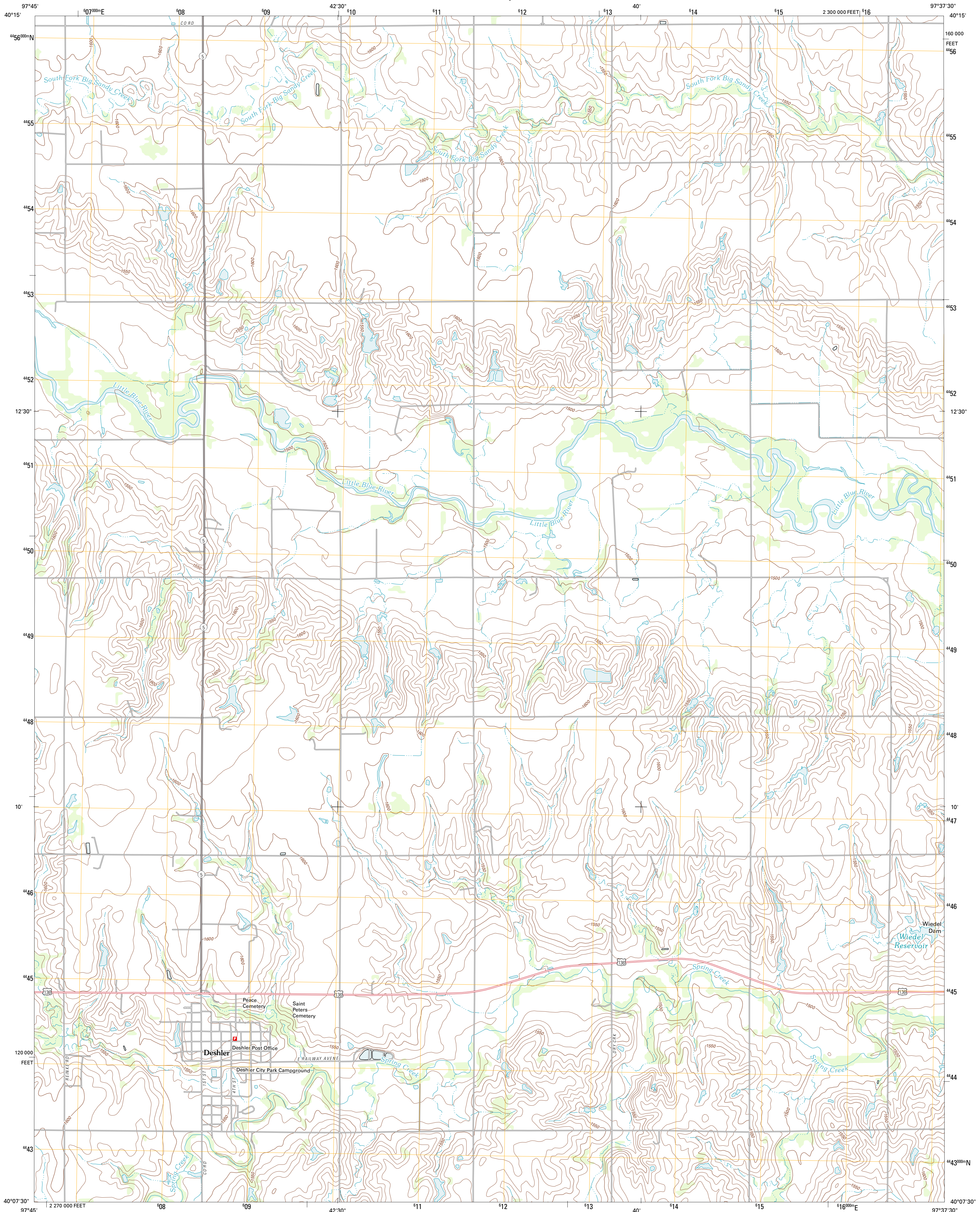




U.S. DEPARTMENT OF THE INTERIOR
U. S. GEOLOGICAL SURVEY

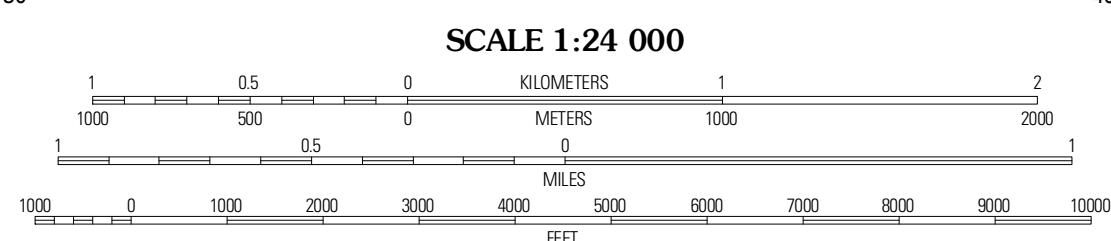
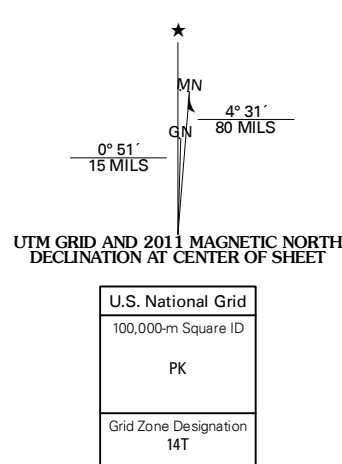


DESHLER QUADRANGLE
NEBRASKA-THAYER CO.
7.5-MINUTE SERIES



Produced by the United States Geological Survey
North American Datum of 1983 (NAD83)
World Geodetic System of 1984 (WGS84). Projection and
1 000-meter grid: Universal Transverse Mercator, Zone 14T
10 000-foot ticks: Nebraska Coordinate System of 1983

Imagery:.....NAIP, June 2010
Roads:.....©2006-2011 TomTom
Names:.....©2011
Hydrography:.....National Hydrography Dataset, 2009
Contours:.....National Elevation Dataset, 2001
Boundaries:.....Census, IBWC, IBC, USGS, 1972 - 2010

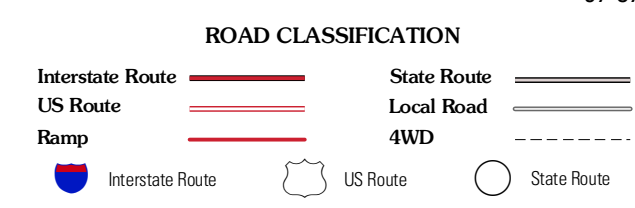


CONTOUR INTERVAL 10 FEET
NORTH AMERICAN VERTICAL DATUM OF 1988
This map was produced to conform with the
National Geospatial Program US Topo Product Standard, 2011.
A metadata file associated with this product is draft version 0.6.1



QUADRANGLE LOCATION

Davenport	Carlton	Burning
Raskin	Deshler	Hebron
Byron	Hebron SW	Chester



DESHLER, NE
2011

ADJOINING 7.5 QUADRANGLES