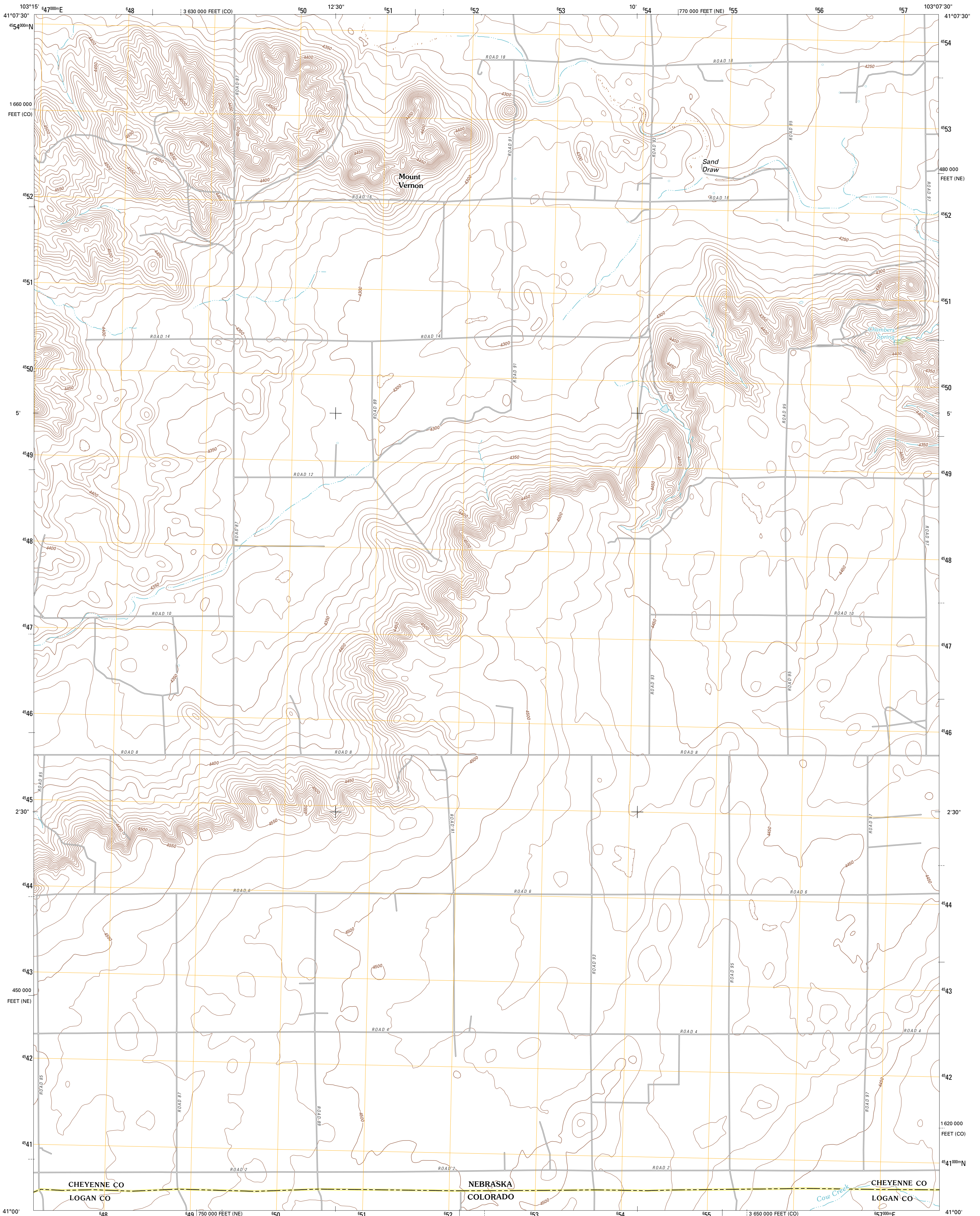




U.S. DEPARTMENT OF THE INTERIOR  
U. S. GEOLOGICAL SURVEY

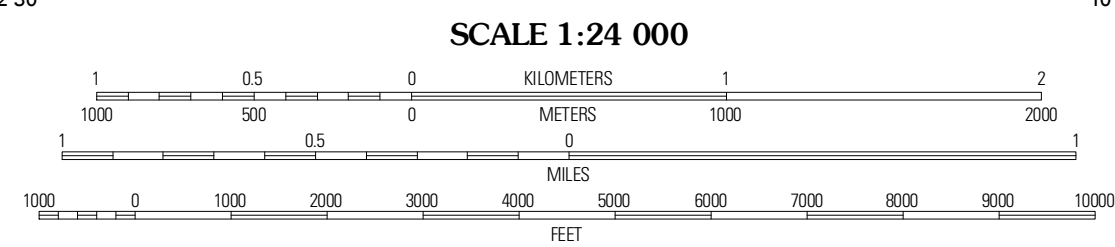
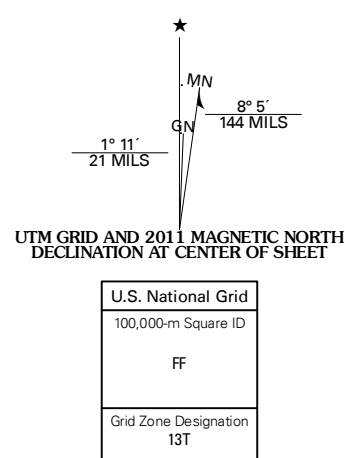


EASTERLY AIRPORT QUADRANGLE  
NEBRASKA-COLORADO  
7.5-MINUTE SERIES



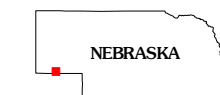
Produced by the United States Geological Survey  
North American Datum of 1983 (NAD83)  
World Geodetic System of 1984 (WGS84). Projection and  
1 000-meter grid: Universal Transverse Mercator, Zone 13T  
10 000-foot ticks: Nebraska Coordinate System of 1983,  
Colorado Coordinate System of 1983 (north zone)

Imagery.....©2006-2011 TerraMetrics  
Roads.....©2006-2011 TomTom  
Names.....GNIS, 2011  
Hydrography.....National Hydrography Dataset, 2010  
Contours.....National Elevation Dataset, 2002  
Boundaries.....Census, IBWC, IBC, USGS, 1972 - 2010



CONTOUR INTERVAL 10 FEET  
NORTH AMERICAN VERTICAL DATUM OF 1988

This map was produced to conform with the  
National Geospatial Program US Topo Product Standard, 2011.  
A metadata file associated with this product is draft version 0.6.1



NEBRASKA

QUADRANGLE LOCATION

Putter	Point of Rocks	Brownson
Putter SE	Easterly Airport	Lorenzo
Kirchnavy Butte	Padroni NW	Puetz

ROAD CLASSIFICATION

Interstate Route  
US Route  
Ramp

State Route  
Local Road  
4WD  
State Route

EASTERLY AIRPORT, NE-CO  
2011

ADJOINING 7.5' QUADRANGLES