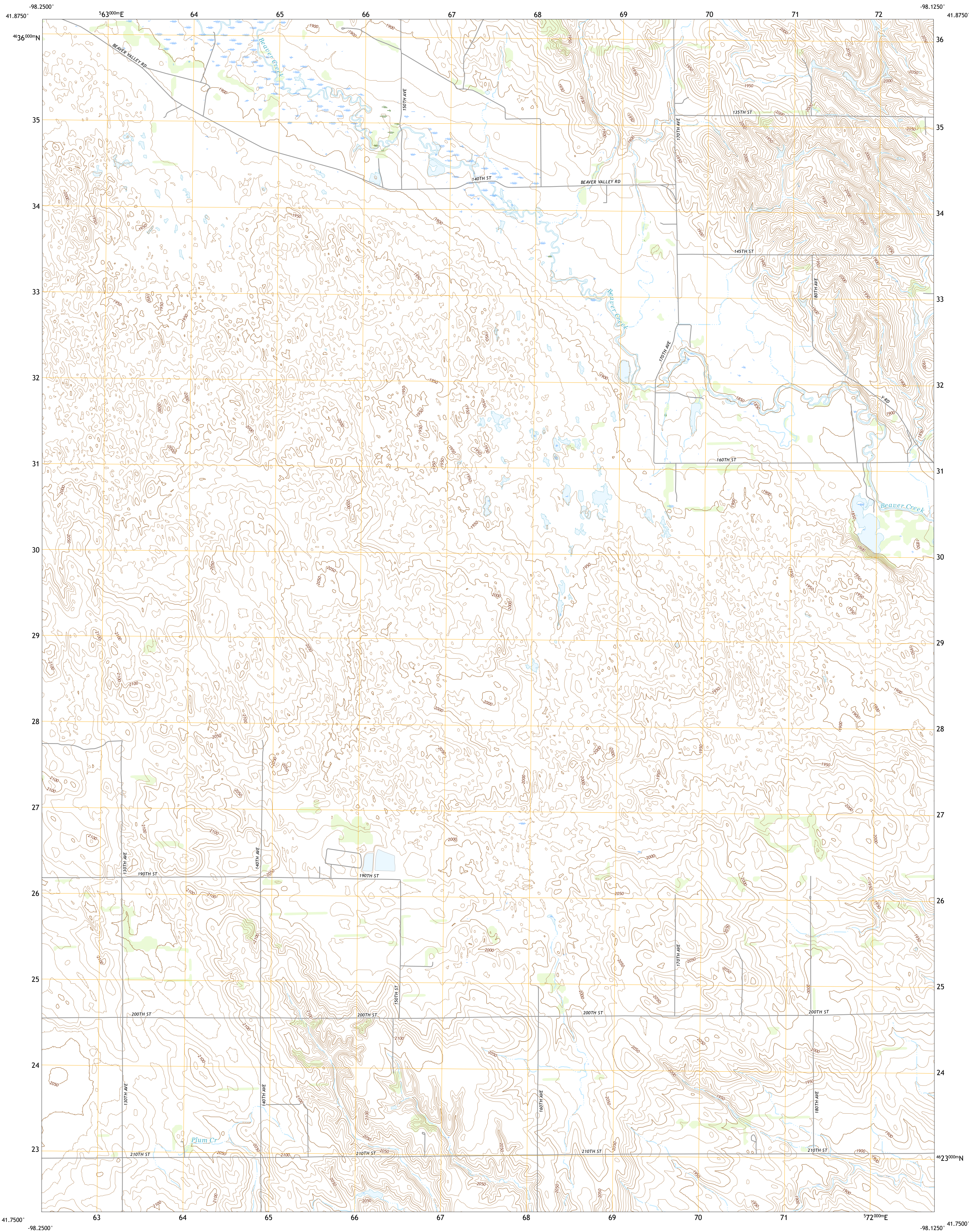




U.S. DEPARTMENT OF THE INTERIOR  
U.S. GEOLOGICAL SURVEY

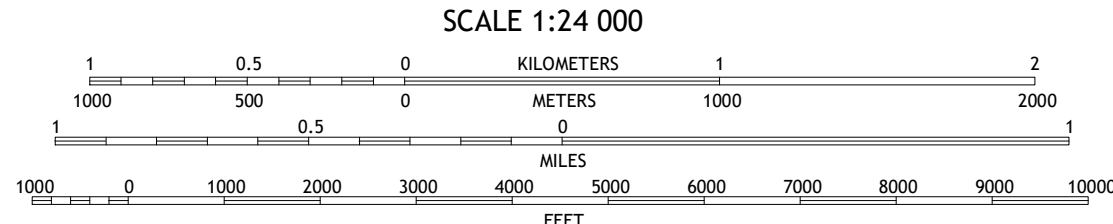
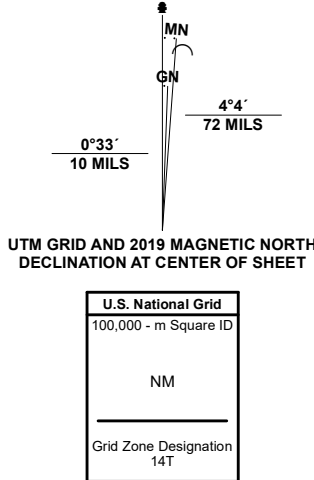


ELGIN SW QUADRANGLE  
NEBRASKA - BOONE COUNTY  
7.5-MINUTE SERIES



Produced by the United States Geological Survey

North American Datum of 1983 (NAD83)  
World Geodetic System of 1984 (WGS84) Projection and  
1 000-meter grid/Universal Transverse Mercator, Zone 14T  
This map is not a legal document. Boundaries may be  
generalized for this map scale. Private lands within government  
reservations may not be shown. Obtain permission before  
entering private lands.  
Imagery.....NAIP, August 2020 - August 2020  
Roads.....U.S. Census Bureau, 2015  
Names.....GNIS, Not Available  
Hydrography.....National Hydrography Dataset, 2006 - 2019  
Contours.....National Elevation Dataset, 2018  
Boundaries.....Multiple sources; see metadata file 2018, 2019  
Public Land Survey System.....BLM, 2020  
Wetlands.....FWS National Wetlands Inventory Not Available



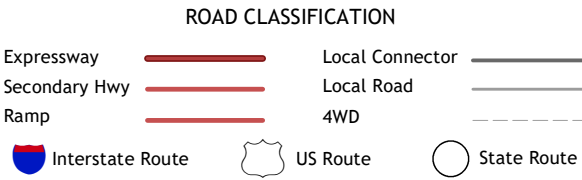
CONTOUR INTERVAL 10 FEET  
NORTH AMERICAN VERTICAL DATUM OF 1988  
This map was produced to conform with the  
National Geospatial Program US Topo Product Standard.



1	2	3
4	5	6
7	8	9

ADJOINING QUADRANGLES

1 Park Church  
2 Elgin NW  
3 Elgin  
4 Mud Creek  
5 Petersburg  
6 Spalding  
7 Akron  
8 Allison West



ELGIN SW, NE  
2021

