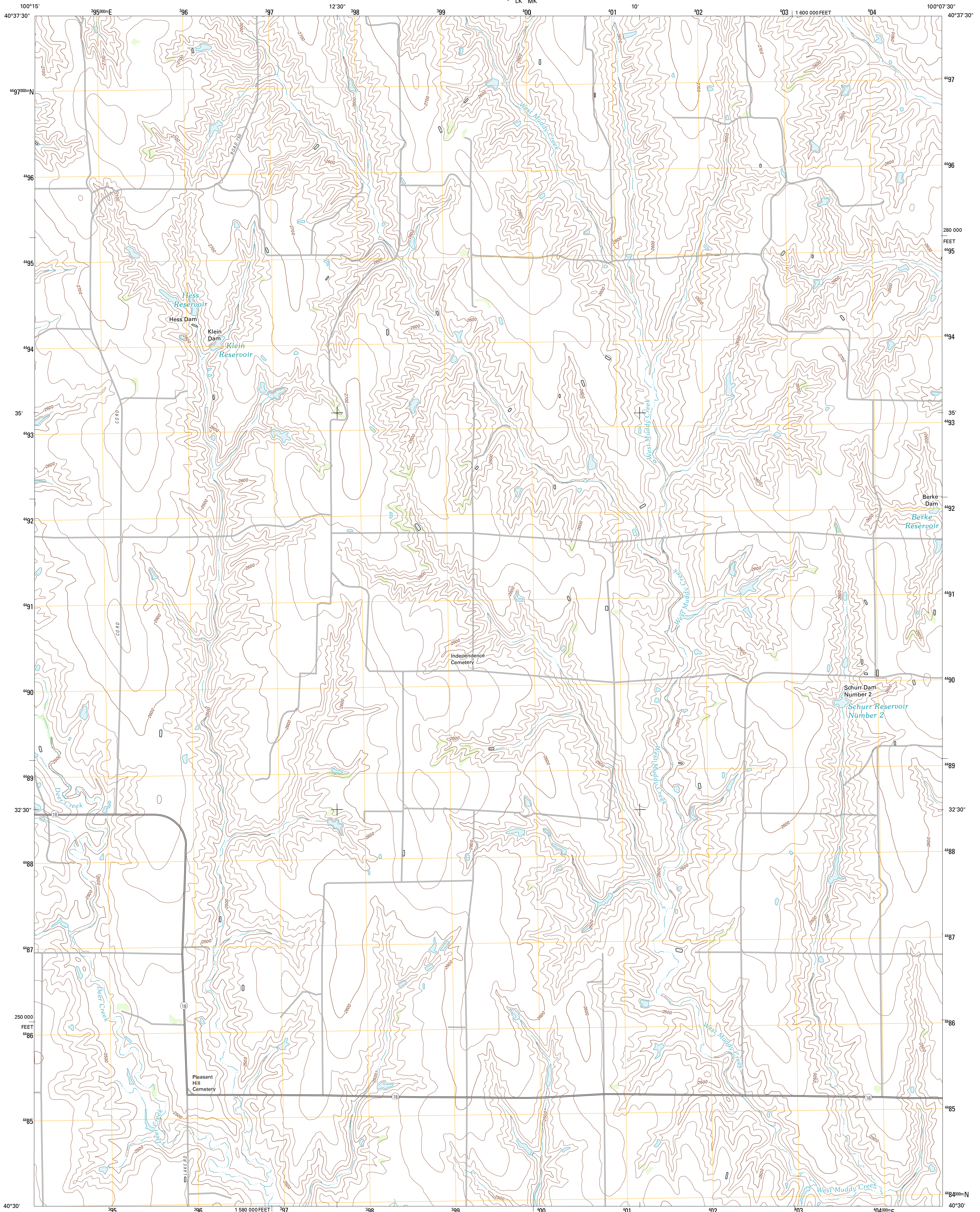




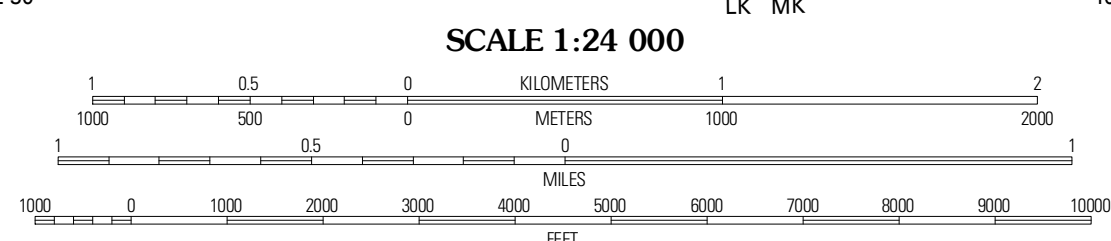
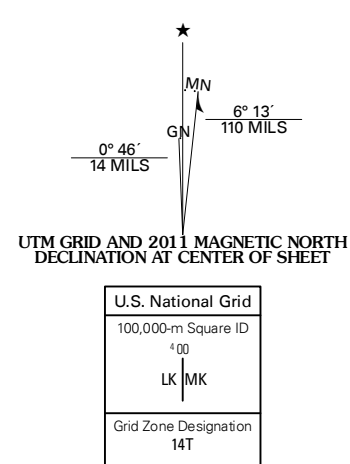
U.S. DEPARTMENT OF THE INTERIOR  
U. S. GEOLOGICAL SURVEY



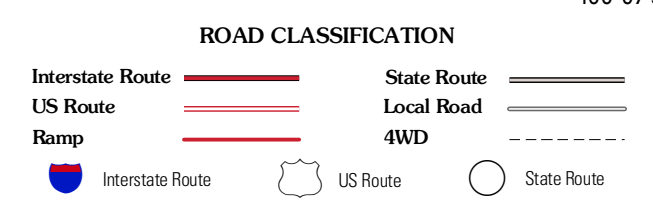
EUSTIS SW QUADRANGLE  
NEBRASKA-FRONTIER CO.  
7.5-MINUTE SERIES



Produced by the United States Geological Survey  
North American Datum of 1983 (NAD83)  
World Geodetic System of 1984 (WGS84). Projection and  
1 000-meter grid. Universal Transverse Mercator, Zone 14T  
10 000-foot ticks: Nebraska Coordinate System of 1983



NEBRASKA



QUADRANGLE LOCATION

Stockville NE	Farmington	Eustis
Stockville SE	Eustis SW	Eustis SE
Freedom	Medicine Creek Dam	Cambridge NE

CONTOUR INTERVAL 20 FEET  
NORTH AMERICAN VERTICAL DATUM OF 1988

This map was produced to conform with the  
National Geospatial Program US Topo Product Standard, 2011.  
A metadata file associated with this product is draft version 0.6.1

EUSTIS SW, NE  
2011

ADJOINING 7.5 QUADRANGLES