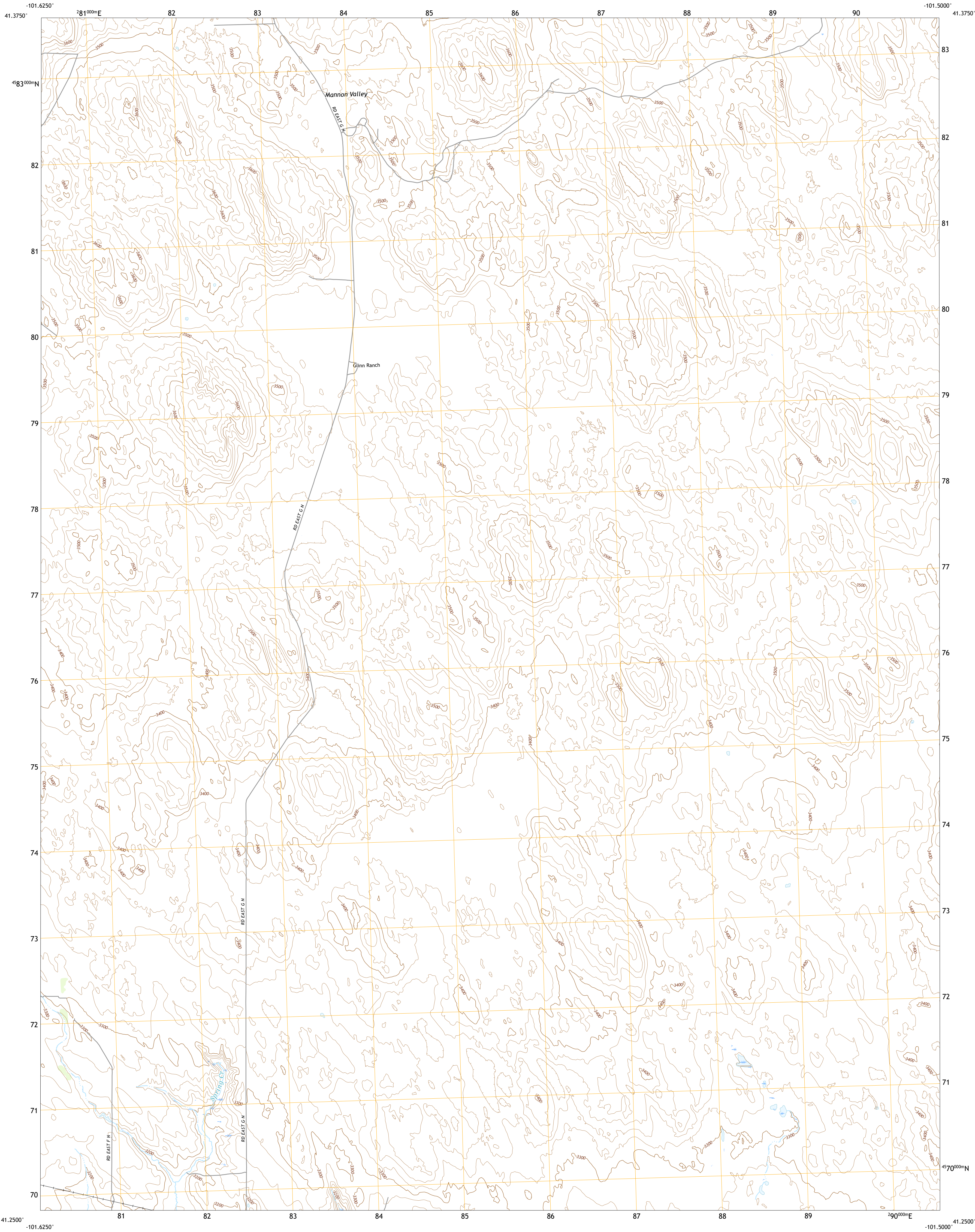




U.S. DEPARTMENT OF THE INTERIOR  
U.S. GEOLOGICAL SURVEY

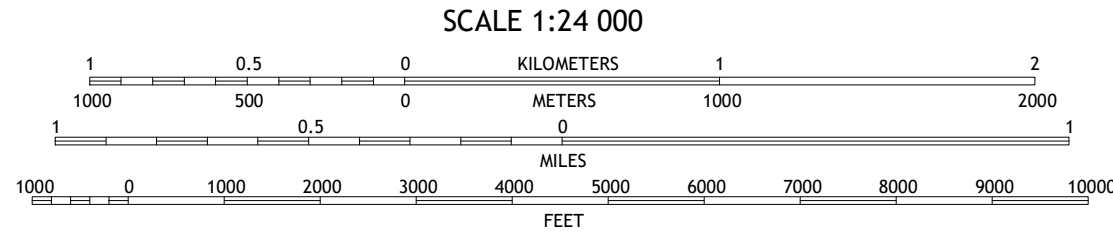
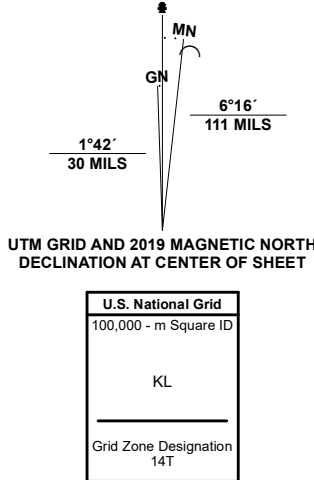


GLINN RANCH QUADRANGLE  
NEBRASKA - KEITH COUNTY  
7.5-MINUTE SERIES



Produced by the United States Geological Survey

North American Datum of 1983 (NAD83)  
World Geodetic System of 1984 (WGS84), Projection and  
1 000-meter grid/Universal Transverse Mercator, Zone 14T  
This map is not a legal document. Boundaries may be  
generalized for this map scale. Private lands within government  
reservations may not be shown. Obtain permission before  
entering private lands.  
Imagery.....NAIP, July 2020 - July 2020  
Roads.....U.S. Census Bureau, 2015  
Names.....GNIS, 1979  
Hydrography.....National Hydrography Dataset, 2005 - 2019  
Contours.....National Elevation Dataset, 2017 - 2018  
Boundaries.....Multiple sources: see metadata file 2018 - 2019  
Public Land Survey System.....BLM, 2020  
Wetlands.....FWS National Wetlands Inventory Not Available



QUADRANGLE LOCATION

1	2	3
4	5	6
7	8	9

- 1 Packard Ranch
- 2 Spotted Horse Valley
- 3 Bucktail Lake
- 4 Martin
- 5 Big Bald Hill
- 6 Ogallala
- 7 Keystone
- 8 Nevers

ROAD CLASSIFICATION	
Expressway	Local Connector
Secondary Hwy	Local Road
Ramp	4WD
Interstate Route	US Route
	State Route

GLINN RANCH, NE  
2021

