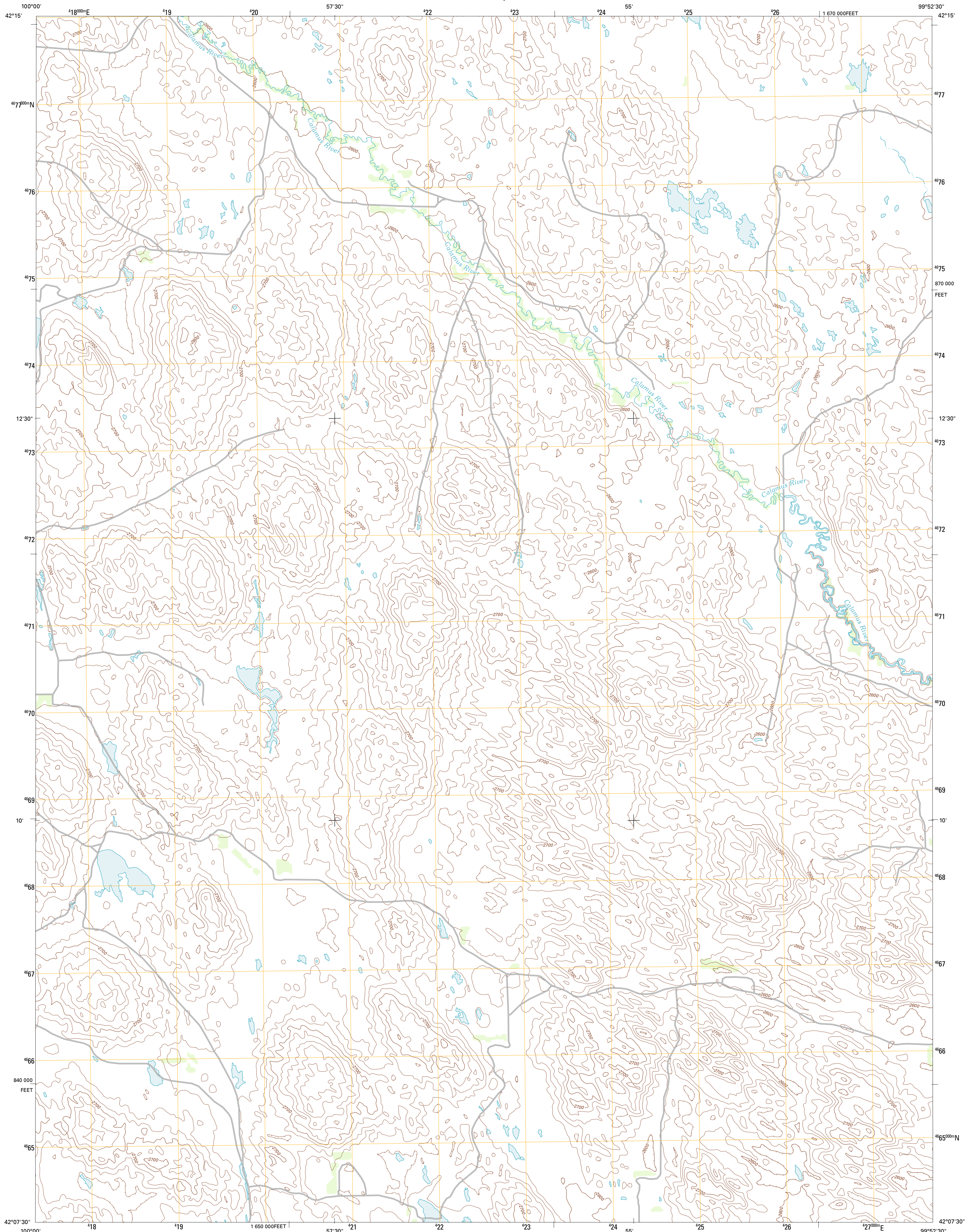




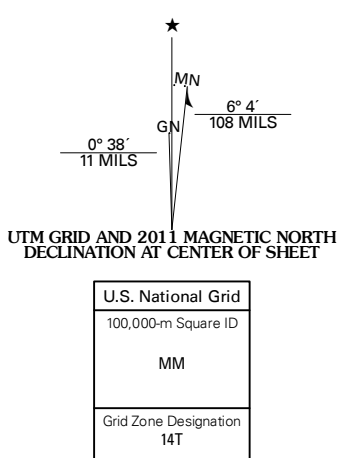
U.S. DEPARTMENT OF THE INTERIOR  
U. S. GEOLOGICAL SURVEY



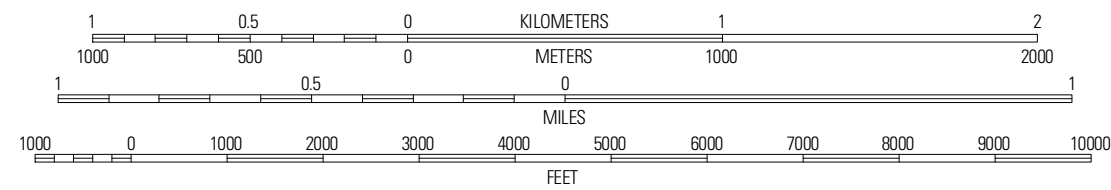
GOLDMAN LAKE NW QUADRANGLE  
NEBRASKA-BROWN CO.  
7.5-MINUTE SERIES



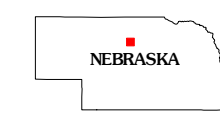
Produced by the United States Geological Survey  
North American Datum of 1983 (NAD83)  
World Geodetic System of 1984 (WGS84). Projection and  
1 000-meter grid: Universal Transverse Mercator, Zone 14T  
10 000-foot ticks: Nebraska Coordinate System of 1983



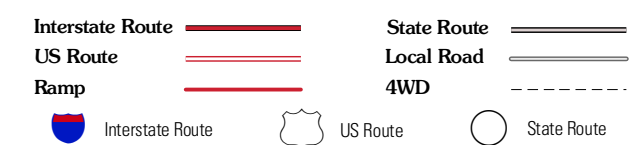
SCALE 1:24 000



CONTOUR INTERVAL 20 FEET  
NORTH AMERICAN VERTICAL DATUM OF 1988  
This map was produced to conform with the  
National Geospatial Program US Topo Product Standard, 2011.  
A metadata file associated with this product is draft version 0.6.1



ROAD CLASSIFICATION



QUADRANGLE LOCATION

Phibbrick Lake	Raven SW	Raven
Koshopah NE	<b>Goldman Lake NW</b>	Goldman Lake NE
Koshopah	Goldman Lake	Goldman Lake SE

GOLDMAN LAKE NW, NE  
2011

ADJOINING 7.5' QUADRANGLES