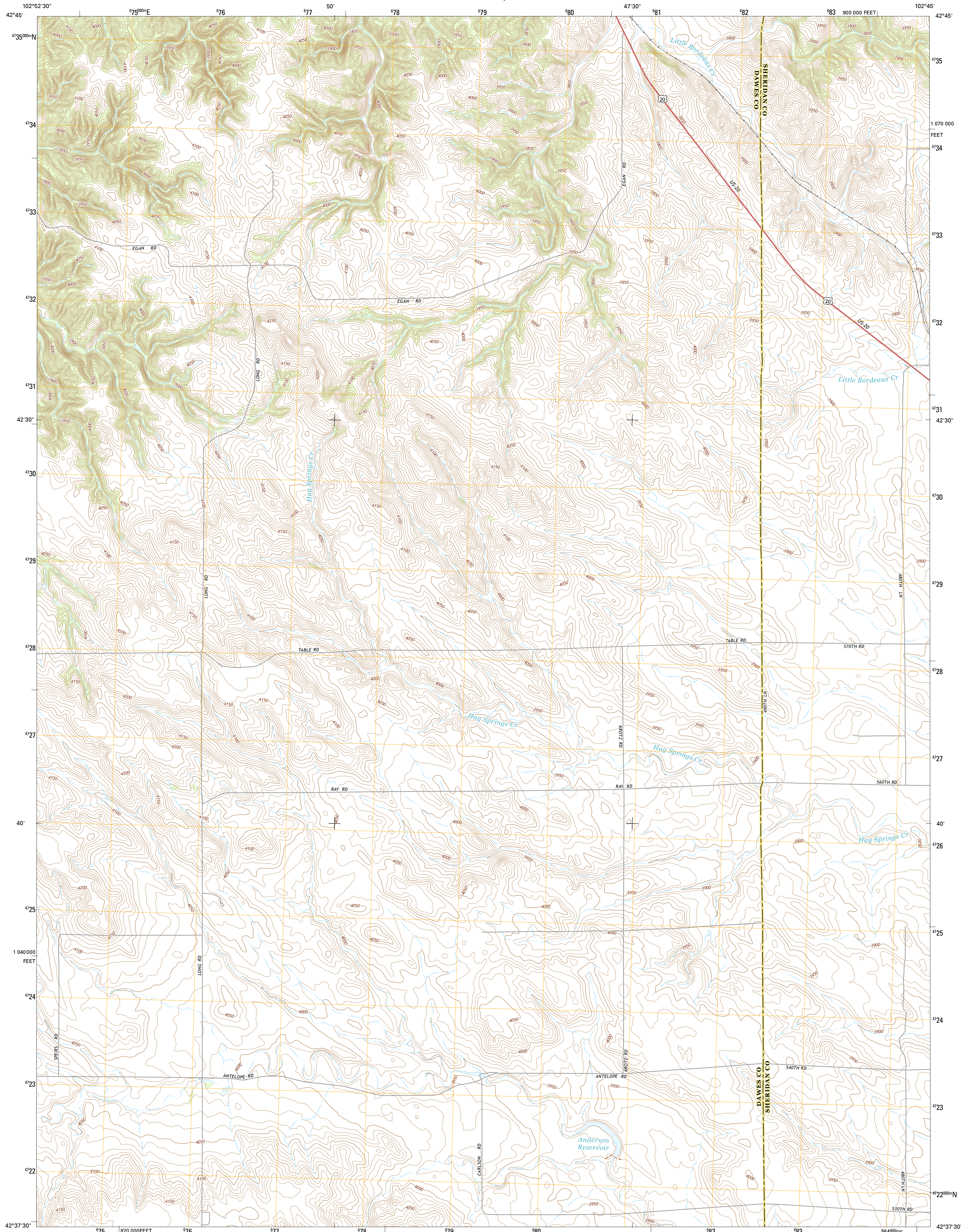




U.S. DEPARTMENT OF THE INTERIOR
U.S. GEOLOGICAL SURVEY



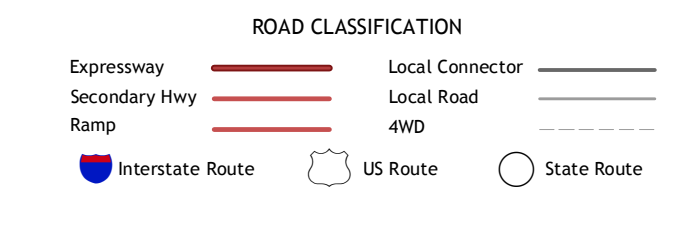
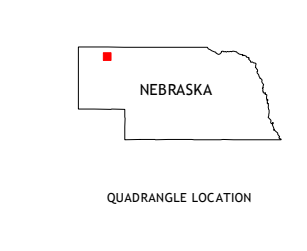
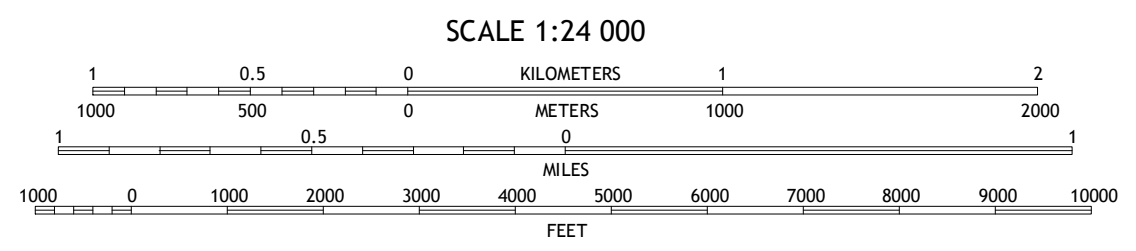
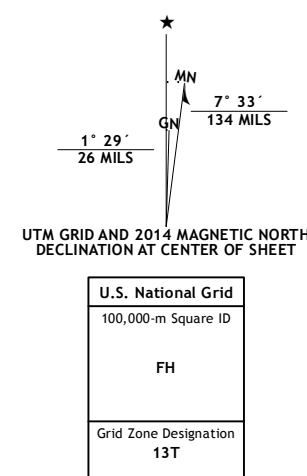
HAY SPRINGS CREEK QUADRANGLE
NEBRASKA
7.5-MINUTE SERIES



Produced by the United States Geological Survey
North American Datum of 1983 (NAD83)
World Geodetic System of 1984 (WGS84). Projection and
1000-meter grid: Universal Transverse Mercator, Zone 13T
10 000-foot ticks: Nebraska Coordinate System of 1983

This map is not a legal document. Boundaries may be
generalized for this map scale. Private lands within government
reservations may not be shown. Obtain permission before
entering private lands.

Imagery.....NAIP, June 2012
Roads.....HERE, ©2013
Names.....GNIS, 2013
Hydrography.....National Hydrography Dataset, 2012
Contours.....National Elevation Dataset, 2002
Boundaries.....Multiple sources; see metadata file 1972 - 2014



1	2	3
4	5	6
7	8	

1 Chadron East
2 Bordeaux
3 Whiteclay SW
4 Kings Canyon
5 Hay Springs
6 Sand Canyon West
7 Sand Canyon East
8 Hay Springs SW

CONTOUR INTERVAL 10 FEET
NORTH AMERICAN VERTICAL DATUM OF 1988
This map was produced to conform with the
National Geospatial Program US Topo Product Standard, 2011.
A metadata file associated with this product is draft version 0.6.16

HAY SPRINGS CREEK, NE
2014

