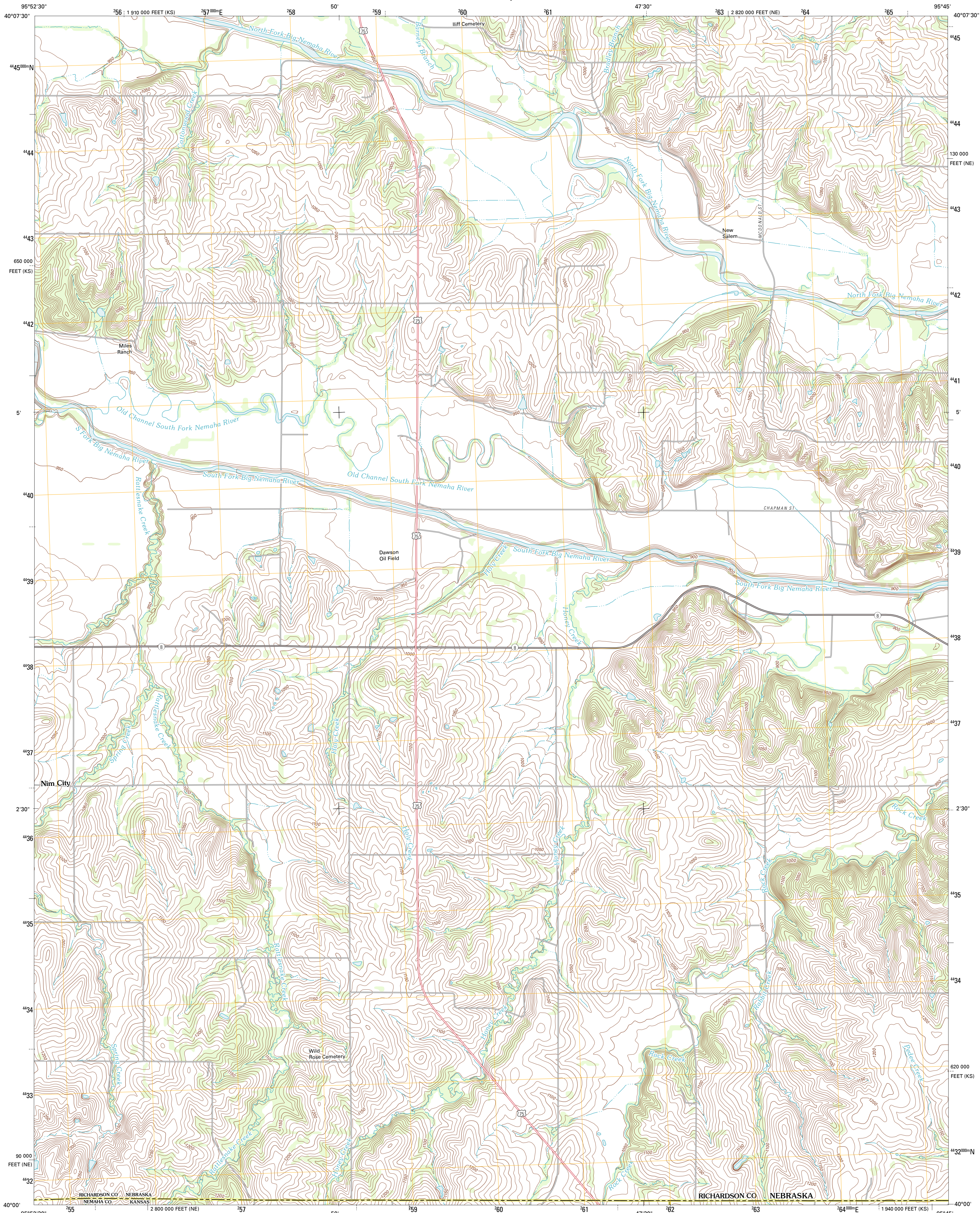




U.S. DEPARTMENT OF THE INTERIOR
U. S. GEOLOGICAL SURVEY

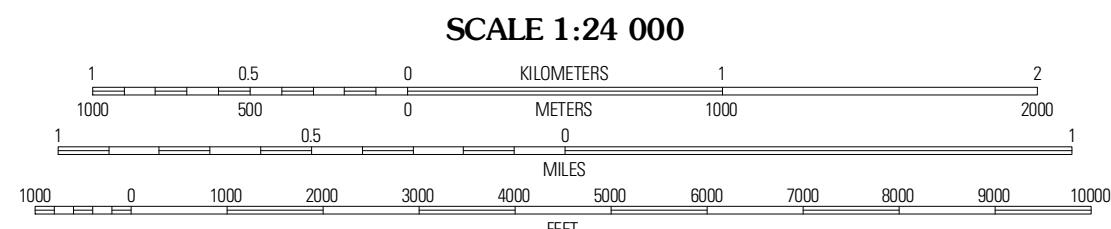
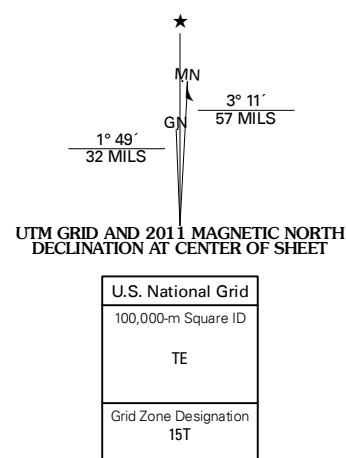


HUMBOLDT SE QUADRANGLE
NEBRASKA-KANSAS
7.5-MINUTE SERIES



Produced by the United States Geological Survey
North American Datum of 1983 (NAD83)
World Geodetic System of 1984 (WGS84). Projection and
1 000-meter grid: Universal Transverse Mercator, Zone 15T
10 000-foot ticks: Nebraska Coordinate System of 1983,
Kansas Coordinate System of 1983 (north zone)

Imagery.....©2006-2011 TomTom
Roads.....©2006-2011 TomTom
Names.....©2006-2011 TomTom
Hydrography.....National Hydrography Dataset, 2009
Contours.....National Elevation Dataset, 2001
Boundaries.....Census, IBWC, IBC, USGS, 1972 - 2010

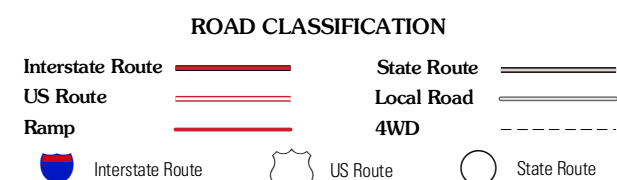


CONTOUR INTERVAL 10 FEET
NORTH AMERICAN VERTICAL DATUM OF 1988
This map was produced to conform with the
National Geospatial Program US Topo Product Standard, 2011.
A metadata file associated with this product is draft version 0.6.1



Humboldt	Dawson	Verdon
Humboldt SW	Humboldt SE	Salem
Bern	Subetha	Morrill

ADJOINING 7.5' QUADRANGLES



HUMBOLDT SE, NE-KS
2011