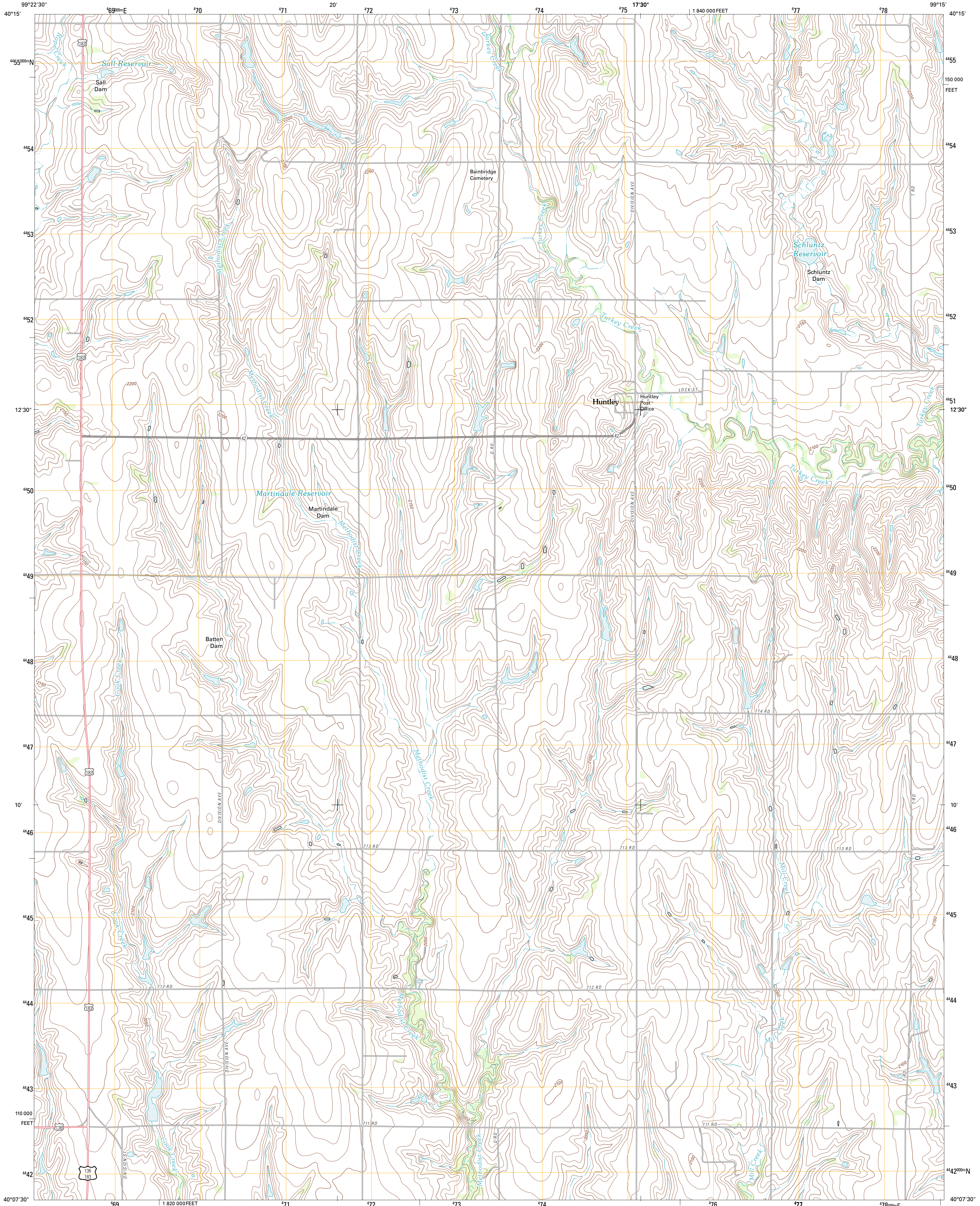




U.S. DEPARTMENT OF THE INTERIOR
U. S. GEOLOGICAL SURVEY

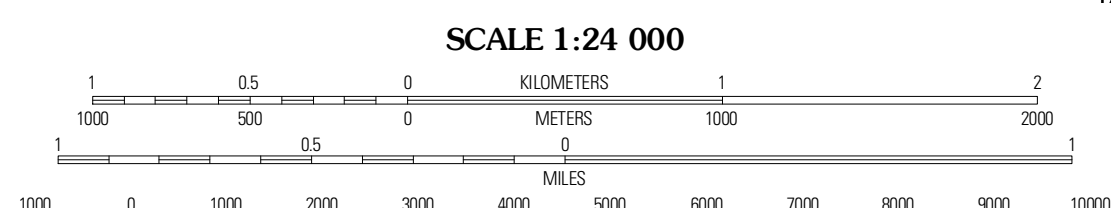
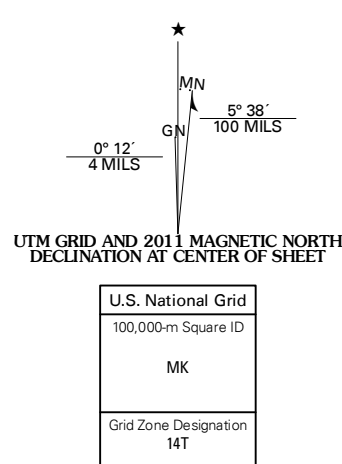


HUNTLEY QUADRANGLE
NEBRASKA-HARLAN CO.
7.5-MINUTE SERIES



Produced by the United States Geological Survey
North American Datum of 1983 (NAD83)
World Geodetic System of 1984 (WGS84). Projection and
1 000-meter grid: Universal Transverse Mercator, Zone 14T
10 000-foot ticks: Nebraska Coordinate System of 1983

Imagery: N.A.P. June 2010
Roads: ©2006-2011 TomTom
Names: National Hydrography Dataset, 2009
Contours: National Elevation Dataset, 2001
Boundaries: Census, IBWC, IBC, USGS, 1972 - 2010

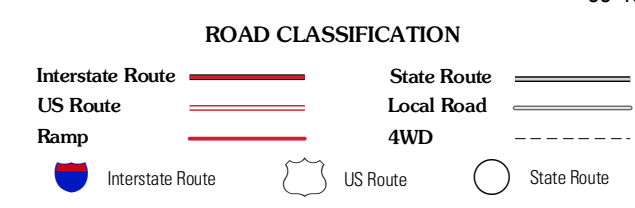


CONTOUR INTERVAL 10 FEET
NORTH AMERICAN VERTICAL DATUM OF 1988
This map was produced to conform with the
National Geospatial Program US Topo Product Standard, 2011.
A metadata file associated with this product is draft version 0.6.1



NEBRASKA
QUADRANGLE LOCATION

Adams	Regan	Wilcox
Osborne	Huntley	Republican City NW
Alma SW	Alma	Republican City



HUNTLEY, NE
2011

ADJOINING 7.5 QUADRANGLES