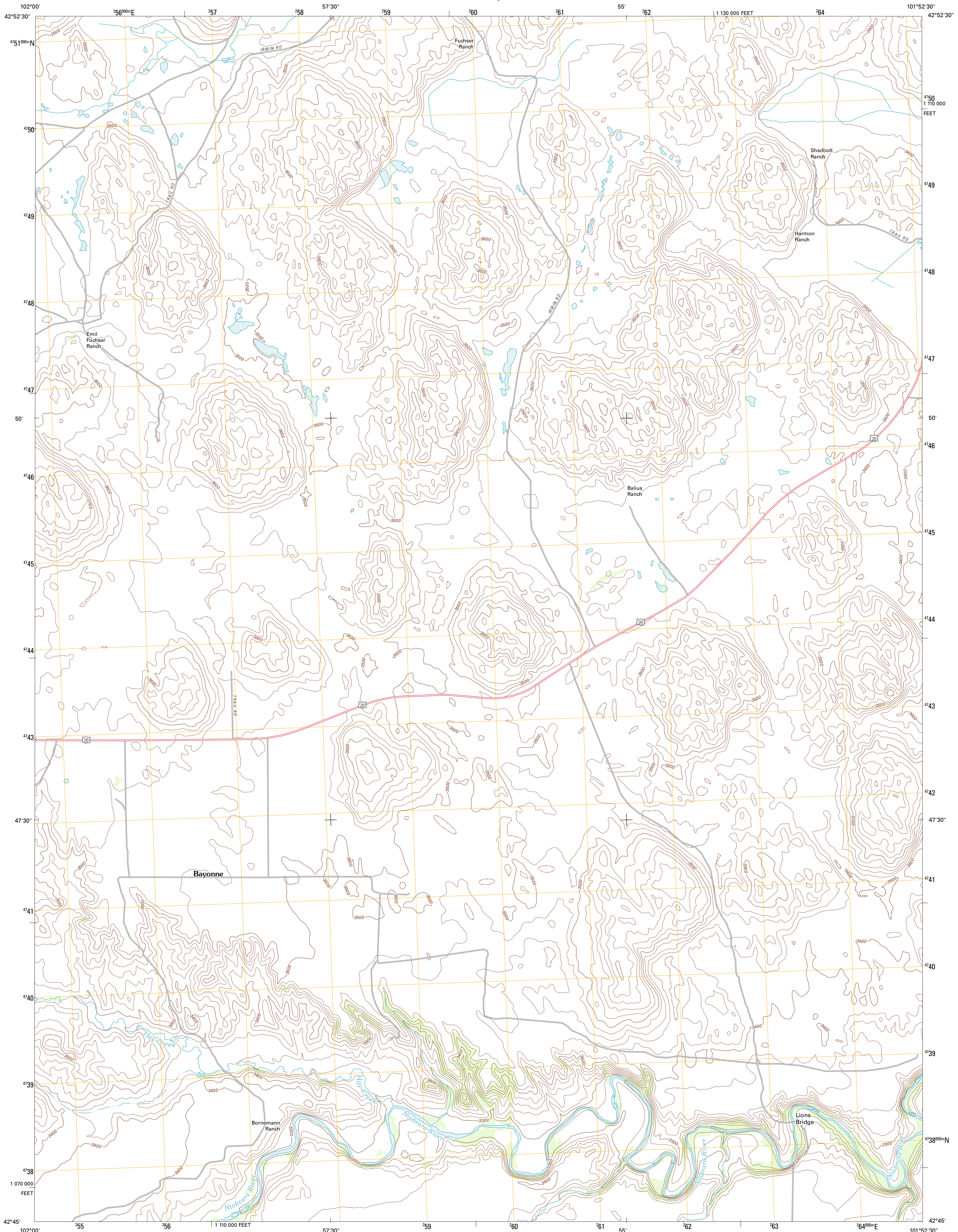




U.S. DEPARTMENT OF THE INTERIOR
U. S. GEOLOGICAL SURVEY

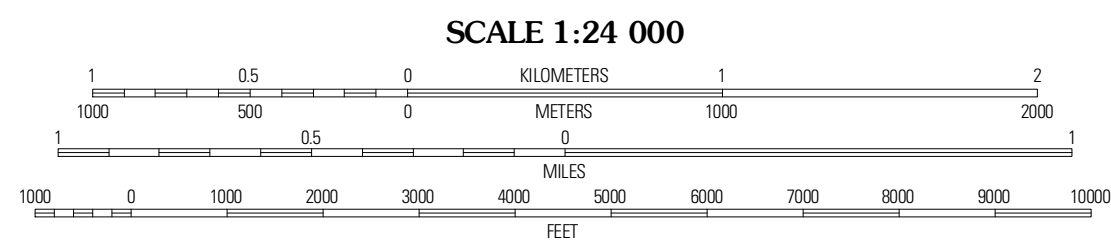
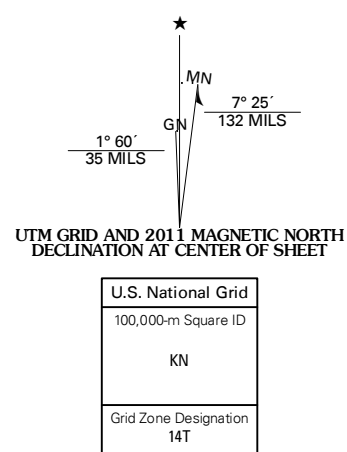


IRWIN SW QUADRANGLE
NEBRASKA-CHERRY CO.
7.5-MINUTE SERIES

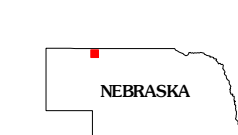


Produced by the United States Geological Survey
North American Datum of 1983 (NAD83)
World Geodetic System of 1984 (WGS84). Projection and
1 000-meter grid: Universal Transverse Mercator, Zone 14T
10 000-foot ticks: Nebraska Coordinate System of 1983

Imagery.....NAIP, July 2010
Roads.....©2006-2011 TomTom
Names.....GNIS, 2011
Hydrography.....National Hydrography Dataset, 2009
Contours.....National Elevation Dataset, 2002
Boundaries.....Census, IBWC, IBC, USGS, 1972 - 2010



SCALE 1:24 000
CONTOUR INTERVAL 20 FEET
NORTH AMERICAN VERTICAL DATUM OF 1988
This map was produced to conform with the
National Geospatial Program US Topo Product Standard, 2011.
A metadata file associated with this product is draft version 0.6.1



QUADRANGLE LOCATION

Hog Island	Irwin	Trumbull Lake
Gordon SE	Irwin SW	Irwin SE
Colburn Canyon	Pole Creek Valley	Bornemann Lake

ROAD CLASSIFICATION
Interstate Route State Route
US Route Local Road
Ramp 4WD

Interstate Route US Route State Route

IRWIN SW, NE
2011

ADJOINING 7.5 QUADRANGLES