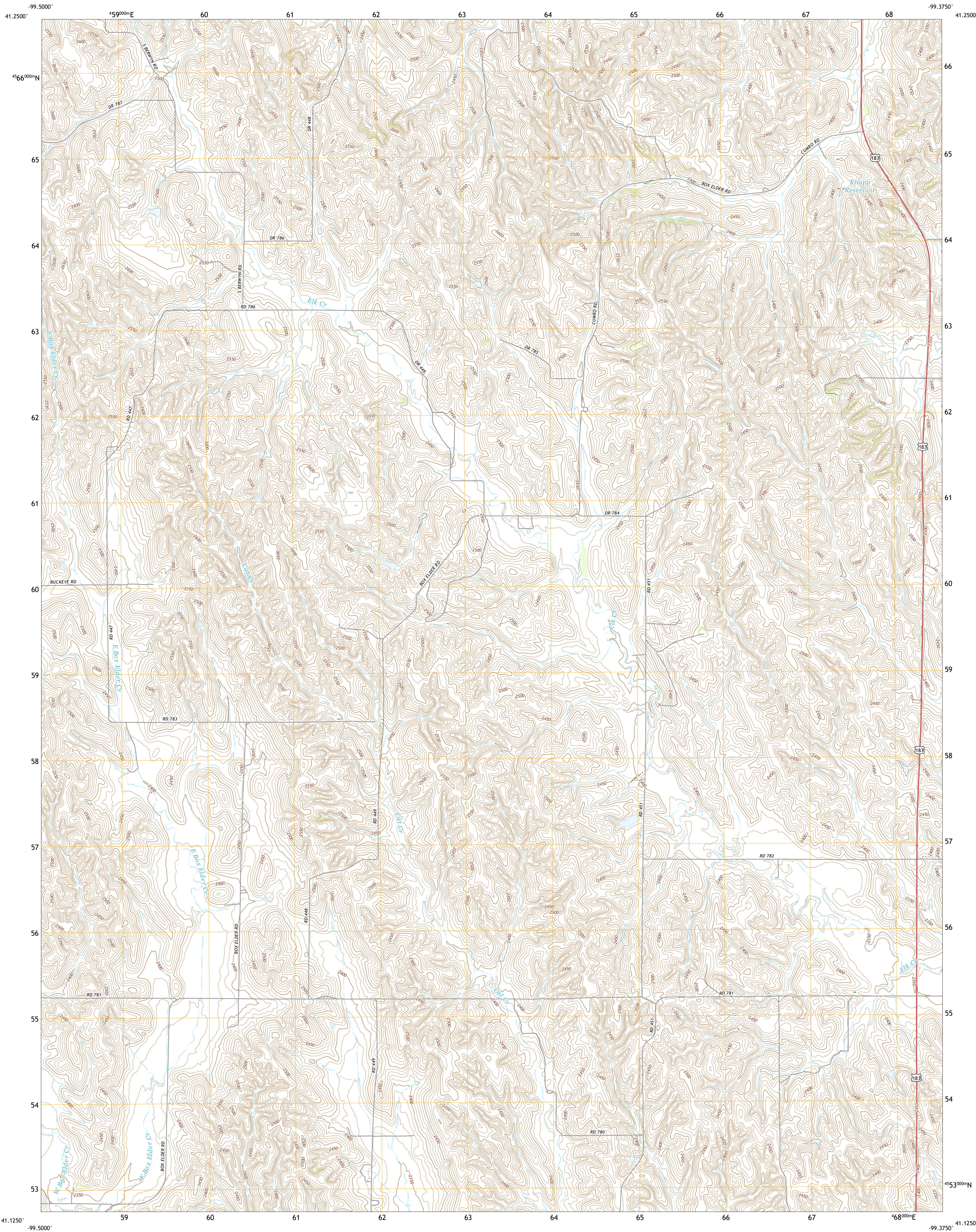




U.S. DEPARTMENT OF THE INTERIOR  
U.S. GEOLOGICAL SURVEY



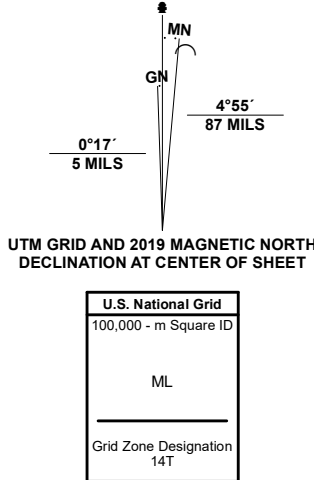
MASON CITY NW QUADRANGLE  
NEBRASKA - CUSTER COUNTY  
7.5-MINUTE SERIES



Produced by the United States Geological Survey

North American Datum of 1983 (NAD83)  
World Geodetic System of 1984 (WGS84) Projection and  
1 000-meter grid/Universal Transverse Mercator, Zone 14T  
This map is not a legal document. Boundaries may be  
generalized for this map scale. Private lands within government  
reservations may not be shown. Obtain permission before  
entering private lands.

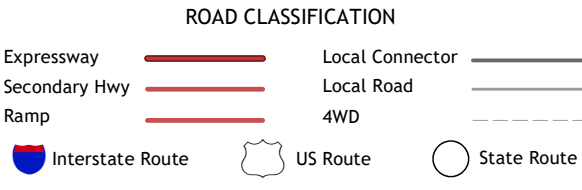
Imagery.....NAIP, August 2020 - August 2020  
Roads.....U.S. Census Bureau, 2015  
Names.....GNIS, Not Available  
Hydrography.....National Hydrography Dataset, 2006 - 2019  
Contours.....National Elevation Dataset, 2018  
Boundaries.....Multiple sources; see metadata file 2018 - 2019  
Public Land Survey System.....BLM, 2020  
Wetlands.....FWS National Wetlands Inventory Not Available



QUADRANGLE LOCATION

1	2	3
4	5	6
7	8	9

1 Broken Bow SE  
2 Ansley SE  
3 Eddyville NE  
4 Eddyville NE  
5 Mason City  
6 Eddyville  
7 Mason City SW  
8 Mason City SE



MASON CITY NW, NE  
2021

