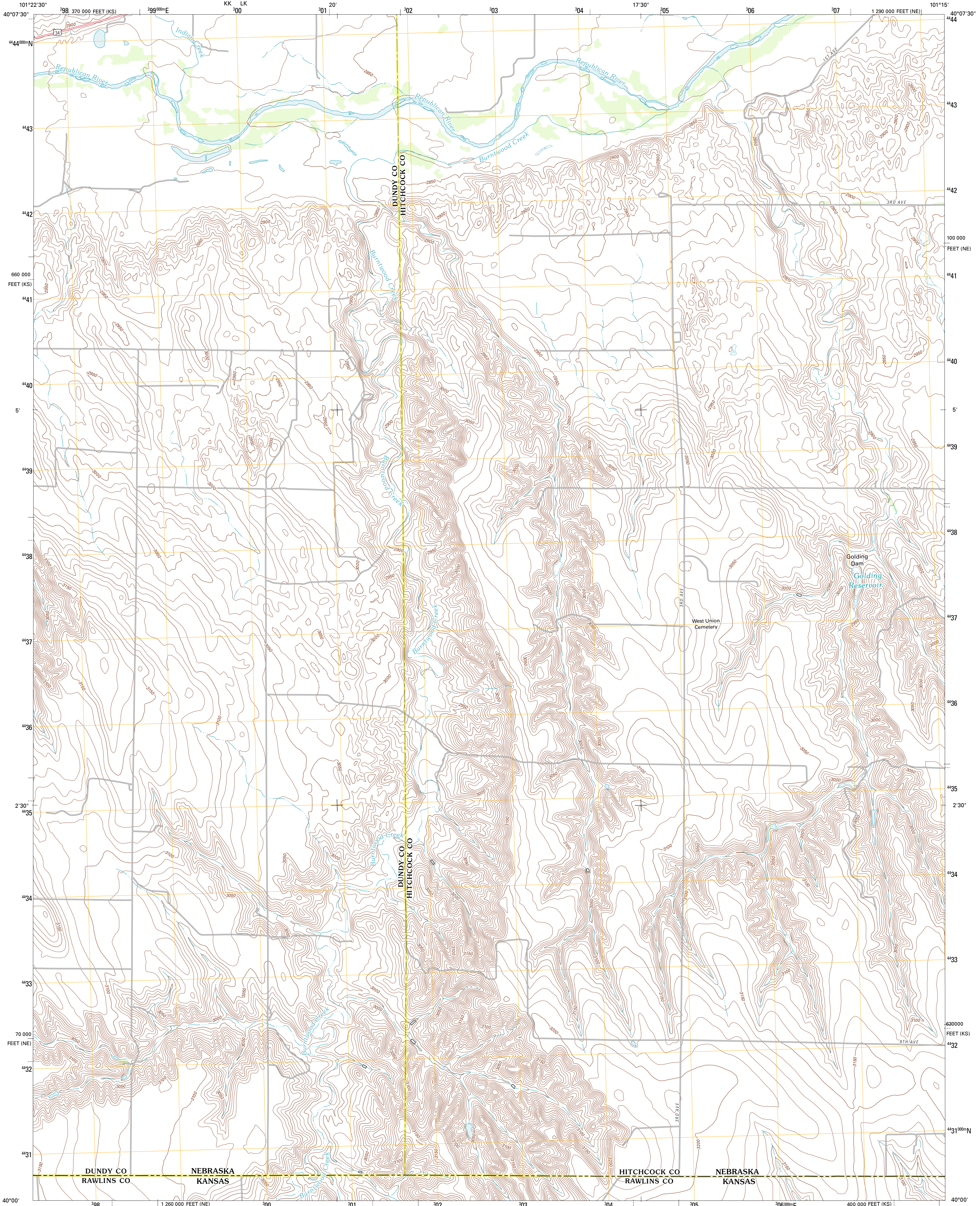




U.S. DEPARTMENT OF THE INTERIOR  
U. S. GEOLOGICAL SURVEY

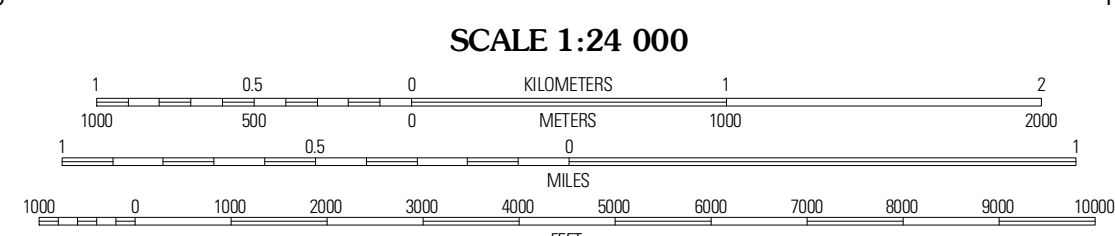
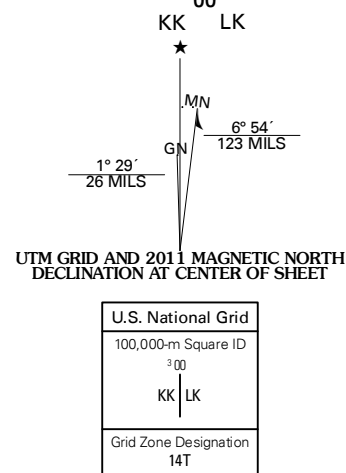


MAX SE QUADRANGLE  
NEBRASKA-KANSAS  
7.5-MINUTE SERIES

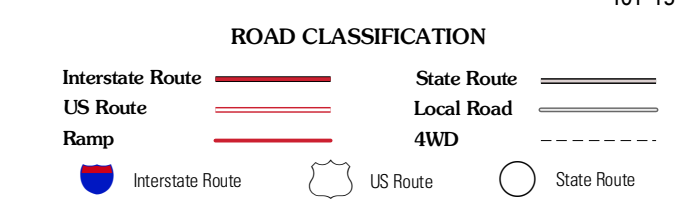
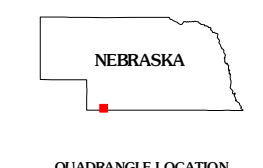


Produced by the United States Geological Survey  
North American Datum of 1983 (NAD83)  
World Geodetic System of 1984 (WGS84). Projection and  
1000-meter grid: Universal Transverse Mercator, Zone 14T  
10 000-foot ticks: Nebraska Coordinate System of 1983,  
Kansas Coordinate System of 1983 (north zone)

Imagery.....©2006-2011 NAIP, July 2010  
Roads.....©2006-2011 TomTom  
Names.....©2006-2011 GNS, 2011  
Hydrography.....National Hydrography Dataset, 2010  
Contours.....National Elevation Dataset, 2001  
Boundaries.....Census, IBWC, IBC, USGS, 1972 - 2010



CONTOUR INTERVAL 10 FEET  
NORTH AMERICAN VERTICAL DATUM OF 1988  
This map was produced to conform with the  
National Geospatial Program US Topo Product Standard, 2011.  
A metadata file associated with this product is draft version 0.6.1



QUADRANGLE LOCATION

Rock Canyon	Max NE	Stratton
Max	Max SE	Trenton SW
McDonald NW	McDonald NE	Atwood NW

MAX SE, NE-KS  
2011

ADJOINING 7.5 QUADRANGLES